



**SOUTH AUSTRALIAN
GOVERNMENT SCHOOLS**

SCHOOL PROFILES

YOUR JOURNEY STARTS HERE







Adelaide; South Australian Tourism Commission

WHY STUDY IN SOUTH AUSTRALIAN GOVERNMENT SCHOOLS

A COMPLETE AUSTRALIAN EXPERIENCE

With white sandy beaches, wildlife parks and picturesque hills villages close to the city of Adelaide, South Australia packs all the Australian experiences into one place. Adelaide is one of the world's most liveable cities with so much to offer beyond the classroom, from local fresh food markets, international sporting events and world-renowned arts and music festivals. Our friendly approach and moderate climate allow you to enjoy a relaxed and active lifestyle all year round.

AFFORDABLE STUDY DESTINATION

South Australia is one of the most affordable study destinations in Australia. Compared to larger cities in Australia, South Australia has some of the lowest cost of living and study abroad fees in the country. This affordability helps make your educational journey abroad more accessible and allows you to focus on your studies and experiences. You can access student concessions on transport, entertainment and events across Adelaide, and shopping for your favourite foods at the Adelaide Central Market and Chinatown are common pastimes.

CENTRALLY MANAGED INTERNATIONAL PROGRAM

Every aspect of your study program, including homestay accommodation, is centrally managed within our office by a caring team of dedicated staff. This makes South Australian Government Schools unique in Australia. We pride ourselves on offering a high level of service to our international students, parents, homestay families, education agents and accredited schools.

SHORT AND LONG TERM STUDY PROGRAMS

Our schools offer a variety of study options and programs to cater to the needs of long and short term primary and secondary students. These options are comprised of secondary school and primary

school graduate programs, study abroad programs, and study tours. Our programs provide you with qualifications and experiences to enrich your education and successfully transition to future pathways.

QUALITY EDUCATION AND WIDE CHOICE

There are more than 100 accredited South Australian Government Schools in both metropolitan Adelaide

and regional South Australia that provide an International Student Program. You can choose a school that is near the beach, close to the city centre or in the country. Our schools offer incredible facilities to enhance the learning experience for all students. Supported by world-class technology and resources, you can enjoy an environment that promotes high-quality education and community collaboration. Each school is unique in their facilities and surroundings but are all committed and consistent in providing a safe and welcoming space for you to study.



DIVERSE SELECTION OF SUBJECTS AND ACTIVITIES

You will have the opportunity to improve your English, join a special interest program, try a new subject like media, design or outdoor education, participate in a school drama production or music band, play a new sport like Australian Rules football, cricket, golf or beach volleyball, experience a new activity like rock climbing, sailing or surfing. With a diverse range of subjects to cater for your interests and career prospects, and passionate, supportive teachers who will nurture your ambitions and work with you to achieve your dreams, the opportunities are endless.

QUALITY HOMESTAY FAMILIES

Our staff know every homestay because we personally accredit and monitor them. This makes it easier for us to find the right homestay for you. When matching you to a suitable homestay family we consider your individual preferences. Living with a supportive homestay family will help you in your studies and enrich your South Australian experience.

SUPPORT EVERY STEP OF THE WAY

Our support service starts before you leave home and continues throughout your study program to ensure you enjoy your South Australian experience. You will receive pre departure support, a welcome and induction on arrival, a comprehensive school orientation, ongoing safety and wellbeing checks, 24-hour emergency support, academic progress monitoring, subject and tertiary pathways counselling.



FOCUS ON SUCCESS, SAFETY AND WELLBEING

South Australian Government Schools prepare you for rewarding post-school career pathways. With world-class universities, TAFE (vocational education and training) and specialised institutions – South Australia has a range of further study options once you graduate secondary school. When you receive a South Australian education, you have the opportunity to succeed academically but to also grow as a person through participation, open-mindedness, critical thinking, language and friendships. Your academic success and personal development will prepare you for a brighter future.

SOUTH AUSTRALIA - HOME AWAY FROM HOME

South Australia is the perfect destination for living and studying abroad. Your homestay family, school and friends will soon make you feel at home so you can enjoy everything that South Australia has to offer!

*Image top left: Warrawong Wildlife Sanctuary, Adelaide Hills;
South Australian Tourism Commission
Image bottom left: Jetty Road, Adelaide;
South Australian Tourism Commission
Image right: Deep Creek National Park,
Fleurieu Peninsula; Harry Vick*

ADELAIDE BRINGS YOU CLOSER TO SUCCESS IN STUDY, WORK AND LIFE.

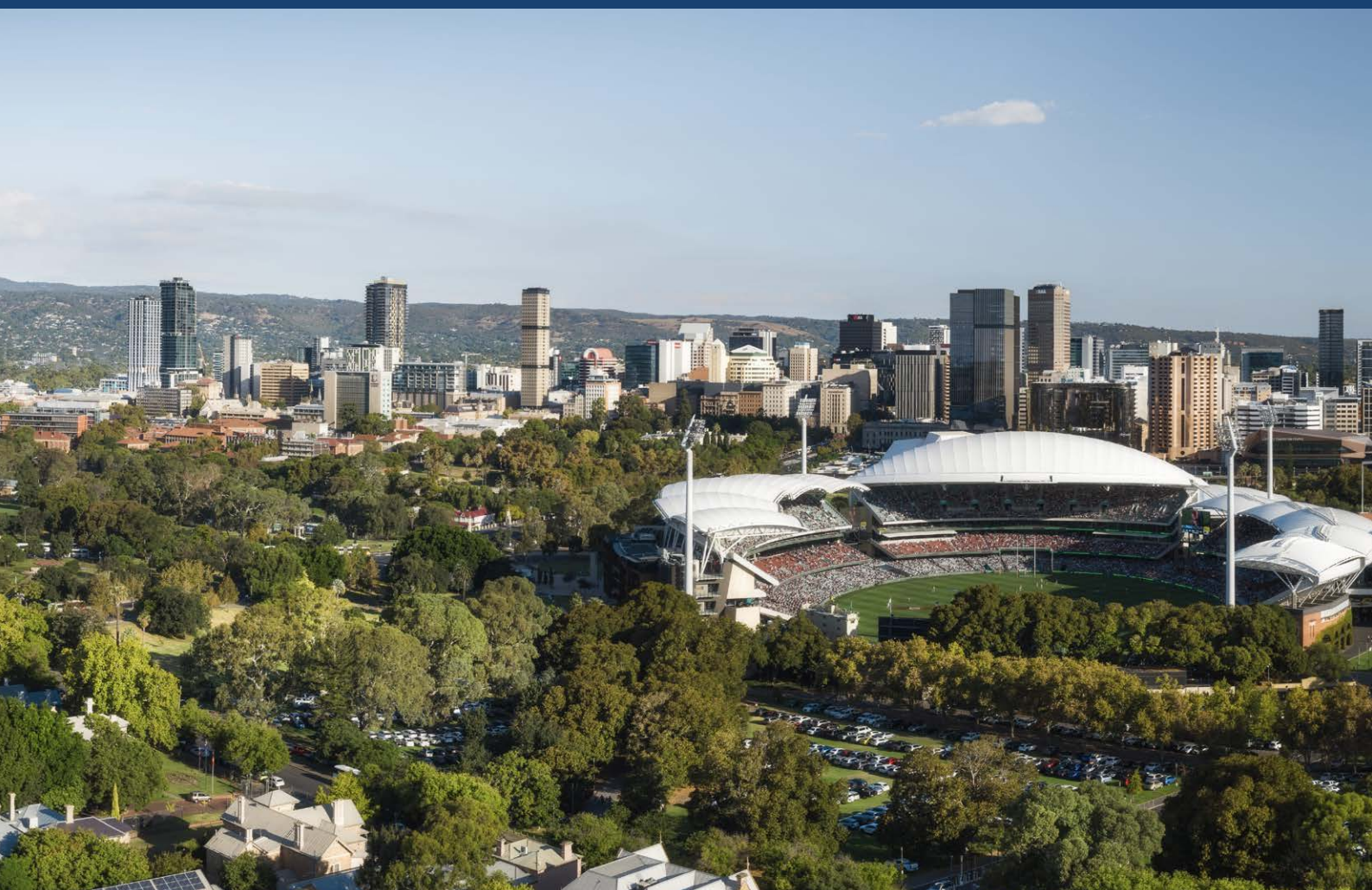
This is a place where quality education meets quality lifestyle, where you can experience a sense of wellbeing while also working towards your goals and qualifications. South Australia is the ideal place to live and study. It is affordable, friendly, accessible and Adelaide is rated as one of the world's most liveable cities.

South Australian Government Schools provides study environments with well-equipped learning spaces, world-class technology and passionate teachers who will nurture your ambitions and work with you to achieve your dreams.

You can choose a school that is near the beach, close to the city centre or in the country. You can also choose a school that fits your educational pathways – from science and technology to the Arts, hospitality or physical education. You can study a variety of subjects while also experiencing the Australian lifestyle. You can learn under Australia's highest education standards, but with a lower cost of living than most other Australian cities. You can live well and learn well.

This is a place where education can be enjoyed, ambition can flourish and dreams can begin. This is a place where you can achieve extraordinary things.

Welcome to South Australia.



CONTENTS

CURRICULUM, QUALIFICATIONS AND PATHWAYS

- 10 SOUTH AUSTRALIAN CERTIFICATE OF EDUCATION (SACE)
- 11 INTERNATIONAL BACCALAUREATE DIPLOMA PROGRAMME (IBDP)
- 11 PATHWAYS

HOW TO CHOOSE A SCHOOL

- 12 YEAR LEVEL
- 13 SCHOOL LOCATION
- 14 SUBJECT OFFERING

SCHOOL PROFILES

- 17 SECONDARY SCHOOLS
- 55 PRIMARY SCHOOLS
- 81 REGIONAL SCHOOLS

Adelaide; South Australian Tourism Commission



CURRICULUM, QUALIFICATIONS AND PATHWAYS

The Australian curriculum is designed to cater to the specific academic needs and interests of students and guide them towards their ideal future pathway.

The core learning areas are English, Mathematics, Science, Humanities and Social Sciences, The Arts, Languages, Health and Physical Education, and Technologies. Schools offer a broad range of specialised subjects and special interest programs within the core learning areas which challenge students to develop essential skills and capabilities.

Specialised subjects include marine biology, hospitality, outdoor education, specialised sport, dance, music and photography. If you want to try a new subject, you should consider this when choosing your school.

Special interest programs are available to students with a talent or passion in a particular subject area such as languages, music, performing arts and sport. Entry into these programs may require evidence of student aptitude, an audition or try-out prior to acceptance. Additional fees may apply.

Students can also participate in a range of co-curricular activities including sport, music bands, engineering design competitions, debating and drama productions.



SOUTH AUSTRALIAN CERTIFICATE OF EDUCATION (SACE)

The South Australian Certificate of Education (SACE) is a modern, internationally recognised secondary school qualification designed to equip students with the skills, knowledge, and personal capabilities to successfully participate in our fast-paced global society.

You need to obtain 200 credits to achieve the SACE, through a mixture of compulsory and free-choice subjects. SACE is awarded to students who complete years 11 and 12 in a South Australian secondary school.

Credit towards SACE may be given to students who have successfully completed year 11 in their own country.

INTERNATIONAL BACCALAUREATE DIPLOMA PROGRAMME (IBDP)

The International Baccalaureate is a globally recognised programme offered to students worldwide, including in Australia. Divided into the Diploma Programme (DP), the Middle Years Programme (MYP), and the Primary Years Programme (PYP), the IB curriculum offers a comprehensive educational framework.

In the IBDP, typically completed during Years 11 and 12, students engage in a challenging and rigorous academic curriculum comprising six subjects. It is designed to develop the learner as global citizen. The IBDP curriculum is made up of six subject groups and the Diploma Program core, comprising theory of knowledge, creativity, activity, service and the extended essay.

The IBDP emphasises personal development, critical thinking and global mindedness. Through the IBDP, schools are able to develop students who have excellent breadth and depth of knowledge; flourish physically, intellectually, emotionally and ethically; study at least two languages; excel in traditional academic subjects; explore and reflect on the nature of knowledge.

PATHWAYS

Successful completion of either the SACE or IBDP provide opportunities for a range of pathways beyond school, including university (including the new Adelaide University created through a merger of the University of Adelaide and the University of South Australia from 2026) and Vocational Education and Training (VET) study.

Some South Australian government schools also offer VET courses (possibly at an additional cost) as part of their curriculum, assisting students gain industry specific skills and nationally recognised qualifications and certificates. VET courses can be taken during and after secondary school to help students enter different industries.

Students who complete SACE receive an Australian Tertiary Admission Rank (ATAR) based on their academic results. The ATAR is recognised for entry into Australian universities and Technical and Further Education (TAFE) institutions and is used by many universities around the world to select students for degree courses.

The IBDP is recognised by universities worldwide and is highly esteemed for admission to Australian and international higher education. Students receive an IBDP score, out of 45, which is also converted to an ATAR for university entry.



HOW TO CHOOSE A SCHOOL

YEAR LEVEL

The South Australian schooling system is comprised of 13 years. Most schools are either primary or secondary only. Some schools cater for Reception to Year 12. Some schools specialise in senior secondary (Years 11–12).

GUIDE TO COUNTRY YEAR LEVEL EQUIVALENTS

These comparisons should be used as a guide only to year level equivalents.

They do not represent academic requirements for studying in South Australia.

	Year Levels	Student Age
Primary School	Reception–Year 6	5–12 years
Secondary School	Years 7–9	13–15 years
	Years 10–12	16–18* years

* Some schools consider students to 19 years.

For more details, please contact us.

South Australia	Year 7	Year 8	Year 9	Year 10	Year 11	Year 12
Brazil	7a Serie	8a Serie	Colegial 1	Colegial 2	Colegial 3	
Cambodia	Grade 7	Grade 8	Grade 9	Grade 10	Grade 11	Grade 12
Canada	Grade 7	Grade 8	Grade 9	Grade 10	Grade 11	Grade 12
Chile	Septimo Básico	Octavo Básico	Primero Medio	Segundo Medio	Tercero Medio	Cuarto Medio
China	Junior High (Middle) 1st Year	Junior High (Middle) 2nd Year	Junior High (Middle) 3rd Year	Senior High 1st Year	Senior High 2nd Year	Senior High 3rd Year
France	Collège - Cinquième (5ème)	Collège - Quatrième (4ème)	Collège - Troisième (3ème)	Lycée - Seconde (2nde)	Lycée - Première (1ère)	Lycée - Terminale
Germany	Gymnasium / Realschule / Hauptschule 7	Gymnasium / Realschule / Hauptschule 8	Gymnasium / Realschule / Hauptschule 9	Gymnasium / Realschule 10	Gymnasium 11	Gymnasium 12
Hong Kong	Form 1	Form 2	Form 3	Form 4 - 5	Form 6	Form 7
India	Secondary	Secondary	Secondary	Senior Secondary	Senior Secondary	Senior Secondary
Indonesia	SLTP 1	SLTP 2	SLTP 3	SMU 1	SMU 2	SMU 3
Italy	I Media	II Media	III Media	I Superiore	II Superiore	III Superiore
Japan	Junior Grade 1	Junior Grade 2	Junior Grade 3	Senior Grade 1	Senior Grade 2	Senior Grade 3
Korea	Year 1 Middle School	Year 2 Middle School	Year 3 Middle School	Year 1 High School	Year 2 High School	Year 3 High School
Malaysia	Form 1	Form 2	Form 3 PMR	Form 4	Form 5 SPM	Form 6 STPM
Mexico	Secundaria 1	Secundaria 2	Secundaria 3	Preparatoria 1	Preparatoria 2	Preparatoria 3
Singapore	Secondary 1	Secondary 2	Secondary 3	Secondary 4	GCE 'O'	GCE 'A'
Taiwan	Junior Grade 1	Junior Grade 2	Junior Grade 3	Senior Grade 1	Senior Grade 2	Senior Grade 3
Thailand	Matayom 1	Matayom 2	Matayom 3	Matayom 4	Matayom 5	Matayom 6
UK	Year 7	Year 8	Year 9	Year 10	Year 11	Year 12
USA	7th Grade	8th Grade	9th Grade (Freshman)	10th Grade (Sophomore)	11th Grade (Junior)	12th Grade (Senior)
Vietnam	Lop 7	Lop 8	Lop 9	Lop 10	Lop 11	Lop 12

SCHOOL LOCATION

There are over 140 primary and secondary schools accredited by the Department for Education to deliver the International Student Program. These schools are located throughout metropolitan Adelaide and regional South Australia.

METROPOLITAN ADELAIDE

Adelaide, the capital of South Australia is a dynamic city of approximately 1.4 million people. Surrounded by green parklands, Adelaide is one of the most beautiful and liveable cities in the world. Beyond the inner city, the suburbs of Adelaide stretch from the hills to the sea.

REGIONAL SOUTH AUSTRALIA

South Australia has many beautiful and varied regions including the Riverland, Flinders Ranges, the Limestone Coast and Kangaroo Island. Regional South Australia offers a uniquely Australian experience, good-quality living and unspoilt natural environment.



SOUTH AUSTRALIAN REGIONS

1	Adelaide	6	Riverland
2	Eyre Peninsula	7	Murraylands
3	Yorke Peninsula	8	Limestone Coast
4	Fleurieu Peninsula	9	Kangaroo Island
5	Barossa Valley	10	Flinders Ranges

SUBJECT OFFERING

SPECIALISED SUBJECTS

All South Australian government schools offer a broad range of interesting and specialised subjects within their curriculum. Students who want to try a new subject or have a talent or passion for a particular subject area should consider this when choosing their school.

Some examples of specialised subjects include:

- Science and Mathematics: robotics, forensic science, psychology, nanotechnology, astronomy and viticulture
- Health and Physical Education: hospitality, nutrition and outdoor education
- The Arts: music, dance, textiles and fashion
- Technologies: computer-aided design, graphic design, photography and animation

SPECIAL INTEREST PROGRAMS

Many of our secondary schools also have special interest programs for students with a talent or passion for a particular subject area. Entry into these programs may require evidence of student aptitude, an audition or try-out prior to acceptance. Additional fees may apply. Please refer to the school website listed on the profile for entry criteria and fees where applicable

ENGLISH LANGUAGE

The Intensive Secondary English Course (ISEC) is available at a number of our secondary schools. Students who need ISEC but are attending schools without an ISEC program will be placed at the Adelaide Secondary School of English or another school for the duration of their ISEC program.

Ongoing English language support is provided by all schools across the curriculum.

CO-CURRICULAR SPORTS AND COMPETITIONS

Schools offer the opportunity to participate individually or as a team member in school-based activities including sports teams, student leadership, music bands, debating, drama productions and adventure activities.

For students interested in sport, it is important to understand that some sports are seasonal and are offered only at specific times of the year.

The table to the right shows the popular sports by season and is to be used as a guide only when applying.

Summer sports	Winter sports
<ul style="list-style-type: none"> • Aquatics swimming, sailing, kayaking, snorkelling, windsurfing, canoeing and surf lifesaving • Athletics track and field, triathlon, cross-country running • Baseball • Cricket • Cycling • Futsal (indoor soccer) • Golf • Rock climbing • Rowing • Softball • Tennis • Beach volleyball 	<ul style="list-style-type: none"> • Australian Rules Football, touch football • Badminton • Basketball, netball • Bushwalking • Cross-country running • Hockey • Soccer (international football) • Lacrosse, softcrosse • Table tennis • Rugby • Outdoor education bushwalking, orienteering • Volleyball



SCHOOL PROFILES

**ADELAIDE
METROPOLITAN
SECONDARY SCHOOLS**

17



**ADELAIDE
METROPOLITAN
PRIMARY SCHOOLS**

55



**SOUTH AUSTRALIAN
REGIONAL SCHOOLS**

81





ADELAIDE METROPOLITAN SECONDARY SCHOOLS

ADELAIDE METROPOLITAN SECONDARY SCHOOLS

1	Aberfoyle Park High School	P 19
2	Adelaide High School	P 20
3	Adelaide Secondary School of English	P 21
4	Australian Science and Mathematics School	P 22
5	Banksia Park International High School	P 23
6	Blackwood High School	P 24
7	Brighton Secondary School	P 25
8	Charles Campbell College	P 26
9	Findon High School	P 27
10	Glenunga International High School	P 28
11	Golden Grove High School	P 29
12	Hallett Cove School	P 30
13	Hamilton Secondary College	P 31
14	Heathfield High School	P 32
15	Henley High School	P 33
16	Marryatville High School	P 34
17	Mitcham Girls High School	P 35
18	Modbury High School	P 36
19	Norwood International High School	P 37
20	Para Hills High School	P 38
21	Parafield Gardens High School	P 39
22	Paralowie R-12 School	P 40
23	Plympton International College	P 41
24	Reynella East College	P 42
25	Roma Mitchell Secondary College	P 43
26	Salisbury East High School	P 44
27	Seaford Secondary College	P 45
28	Seaton High School	P 46
29	Thebarton Senior College	P 47
30	Underdale High School	P 48
31	Unley High School	P 49
32	Valley View Secondary School	P 50
33	Wirreanda Secondary School	P 51
34	Woodville High School	P 52



ABERFOYLE PARK HIGH SCHOOL

aphs.sa.edu.au

Aberfoyle Park High School is located 22 km south of Adelaide, nestled amongst native gum trees and close to public transport, parks and a large community shopping centre. Aberfoyle Park High School is known for its vibrant, dynamic and engaging curriculum which includes an outstanding Visual and Performing Arts program incorporating music, dance, drama, visual arts and design. The school also offers the International Baccalaureate Diploma Program for Years 11 and 12.

LOCATION

Southern Adelaide

YEAR OF ESTABLISHMENT

1984

NUMBER OF STUDENTS

1000

YEARS

7–12

INTERNATIONAL PROGRAMS

- High School Graduate
- High School Study Abroad
- Study Tours

SCHOOL FOCUS

- Visual and performing arts
- Innovation and technology
- Gifted and talented education

FACILITIES

- A dynamic Performing and Visual Art Centre
- Multimedia suite with photography facilities
- Shared community library with extended hours
- Sporting facilities – gymnasiums, ovals, soccer pitch, tennis, volleyball
- Shared use of the Happy Valley Sports Park which includes tennis and netball courts, bowling greens and the football oval
- Contemporary Science, Technology, Engineering and Mathematics (STEM) Centre

SPECIAL INTEREST PROGRAMS

- International Baccalaureate Diploma Program (Years 11–12)
- IGNITE – accelerated learning program for gifted and talented students
- Music – musicianship, ensemble, composing and arranging
- Vocational Education and Training (VET) community services, sport and recreation, construction and electro-technology (Years 10–12)
- Sports – soccer (Years 9–10)
- Outdoor education – bushwalking, aquatics, rock-climbing and mountain climbing (Years 9–12)
- Pedal prix

LANGUAGES

- Spanish
- Japanese

SUPPORT SERVICES

- English language support
- International Student Program manager

CO-CURRICULAR SPORTS

- Athletics
- Aquatics – surfing
- Australian Rules Football
- Soccer, futsal
- Basketball
- Netball
- Cricket
- Volleyball, beach volleyball
- Tennis
- Badminton

* Sports are usually run as knockout or one day competitions once a year.

OTHER CO-CURRICULAR ACTIVITIES

- Music – concert, jazz and stage bands, ensembles, choir
- Student Ambassador Program
- Chess club
- Coding club (app development)
- Environmental group
- Robotics club
- Student ambassador program



ADELAIDE HIGH SCHOOL

adelaidehs.sa.edu.au

Adelaide High School is recognised as a successful and innovative South Australian public school, offering students a dynamic learning environment to support them to achieve their potential. The school proudly offer students a diverse range of curricular and co-curricular opportunities accompanied by supportive mentor group programs. All learning opportunities at Adelaide High School are underpinned by the school motto 'non scholae sed vitae' ('not only for school but for life') and focus on helping students build the skills, qualities and capabilities to achieve in the future. The school's curriculum, co-curricular program and House system challenge, engage, enrich, support and stretch all learners who attend Adelaide High School.

LOCATION

Central Adelaide

YEAR OF ESTABLISHMENT

1908

NUMBER OF STUDENTS

1900

YEARS

7–12

INTERNATIONAL PROGRAMS

- Intensive Secondary English Course (ISEC)
- High School Graduate
- High School Study Abroad
- Study Tours incoming and outgoing

FACILITIES

- Canteen run by Rorys
- Year 12 study areas and common room.
- Languages centre
- Extensive private study areas
- Library – resource centre
- IT support centre
- Design and technology centre
- Technical STEAM rooms (3D printers, laser cutting, woodwork, VR headsets)
- Performing arts centre – music rooms, dance studios, drama
- Sporting facilities – gymnasium, playing fields, tennis and basketball courts, weights room, rowing ergonomics, cricket nets
- Commercial kitchen
- Rowing clubhouse with facilities at West Lakes and River Torrens

SPECIAL INTEREST PROGRAMS

- Language programs
- Cricket program
- Rowing program
- Centre for Deaf & Hard of Hearing (CDHH)
- Science, Technology, Engineering, the Arts and Mathematics (STEAM)

LANGUAGES

- European – German, French, Greek, Italian, Spanish
- Asian – Chinese, Japanese, Vietnamese
- Auslan (Australian sign language)
- English as an Additional Language (EAL)

SUPPORT SERVICES

- English language support
- International learning support
- Connect team - wellbeing
- International Student Program manager and support officer
- Intercultural Student Ambassador Group
- University Tutors program

CO-CURRICULAR SPORTS

- Athletics
- Australian Rules Football
- Soccer
- Touch football
- Badminton
- Tennis, table tennis
- Basketball
- Netball
- Cricket
- Hockey
- Rowing
- Softball
- Swimming
- Volleyball

OTHER CO-CURRICULAR ACTIVITIES

- Music – jazz and concert bands, ensembles, choir, orchestra
- Debating and chess clubs
- Theatre group
- Environmental group
- Interact community group
- F1 in Schools program – international STEAM competition



ADELAIDE SECONDARY SCHOOL OF ENGLISH

adsecenglish.sa.edu.au

Adelaide Secondary School of English is located just 8km west of the city of Adelaide. It offers specialist intensive English language programs to prepare newly arrived secondary aged students, from diverse cultural and language backgrounds, for entry into mainstream high schools across the metropolitan area. The school is internationally accredited by the Council of International Schools. A strong emphasis on intercultural perspectives and student wellbeing, support students to study and settle into South Australia.

LOCATION

Western Adelaide

YEAR OF ESTABLISHMENT

1976

NUMBER OF STUDENTS

400

YEARS

7–11

INTERNATIONAL PROGRAMS

- Intensive Secondary English Course (ISEC)

SCHOOL FOCUS

- English
- Resource and activity-based learning
- Student wellbeing
- Diverse and multicultural learning environment with an average of 45 cultural and language groups

FACILITIES

- Sporting facilities – gymnasium, sports fields
- Technical studies centre
- Home economics centre
- ICT hub
- Student services centre
- Science laboratories

LANGUAGES

- English as an Additional Language (EAL)

SUPPORT SERVICES

- English language support
- International Student Program manager
- Bilingual support officers for a range of languages
- Personal Learning and Wellbeing (PLW) program

CO-CURRICULAR SPORTS

- Australian Rules Football
- Soccer
- Badminton
- Basketball
- Cricket

OTHER CO-CURRICULAR ACTIVITIES

- Music – drumming, choir
- Gardening group
- Guitar club
- Piano club
- Lego club
- Art club



AUSTRALIAN SCIENCE AND MATHEMATICS SCHOOL

asms.sa.edu.au

The Australian Science and Mathematics School is an innovative purpose-built school, designed for highly collaborative and interactive learning that enables students to explore emerging science and technologies. Located on the campus of Flinders University at the base of the Adelaide hills, the Australian Science and Mathematics School is close to public transport, major shopping and popular beaches.

LOCATION

Southern Adelaide

YEAR OF ESTABLISHMENT

2003

NUMBER OF STUDENTS

407

YEARS

10–12

INTERNATIONAL PROGRAMS

- High School Graduate
- High School Study Abroad
- Study Tours

SCHOOL FOCUS

- Science, Technology, Engineering and Mathematics (STEM)
- Interdisciplinary learning
- Advanced technologies
- Developing students as self-directed learners

FACILITIES

- Science, control technology and audio visual studios
- Shared campus with Flinders University
- Sporting facilities
- Virtual classrooms with 24-hour access to learning programs and resources
- Avionics studio with synthetic flight simulator

SPECIAL INTEREST PROGRAMS

- Scientific studies – aviation studies – aeronautical knowledge and flight operations (Year 12)
- Passion project - enrichment and extension program of short courses

SUPPORT SERVICES

- International Student Program manager

OTHER CO-CURRICULAR ACTIVITIES

- International Science Fair
- Community service club



BANKSIA PARK INTERNATIONAL HIGH SCHOOL

bpihs.sa.edu.au

Banksia Park International High School is located in the north-eastern suburbs of Adelaide accessible by the fast-track transport system to the centre of Adelaide. The school is surrounded by native Australian parklands and is close to recreational parks, sporting facilities, and a major shopping and cinema complex. Banksia Park International High School is a specialist future academy school where entrepreneurial skills for aspiring business and social entrepreneurs are developed, practiced and used every day across every area of the curriculum. Students also have the unique opportunity to pursue the Global Citizens Medal.

LOCATION

Northeastern Adelaide

YEAR OF ESTABLISHMENT

1973

NUMBER OF STUDENTS

1033

YEARS

7–12

INTERNATIONAL PROGRAMS

- Intensive Secondary English Course (ISEC)
- High School Graduate
- High School Study Abroad
- Study Tours

SCHOOL FOCUS

- English
- Soccer
- Mathematics, science and technology
- Specialist Future Academy (entrepreneurial) education
- Global Citizens Medal

FACILITIES

- Dedicated international student classrooms
- Performing arts centre including music suites, drama theatre, contemporary kitchen facilities and visual arts space
- Sporting facilities – oval, cola, gymnasium, fitness centre, soccer pitch, cricket nets, playing courts
- Specialist science laboratories and technology workshops
- Food and technology rooms

- Middle and senior school learning areas
- Year 12 study area Future Academy facilities and high quality curriculum resources

SPECIAL INTEREST PROGRAMS

- Soccer – skills, training principles, refereeing, coaching, sports administration (Years 9–11)
- Global Citizens Medal (Year 12)
- Entrepreneurial pathway program

LANGUAGES

- Japanese
- Spanish (Year 7 for 2025)
- English as an Additional Language (EAL) (Years 10–12)

SUPPORT SERVICES

- English language support
- International Student Program manager and dedicated staff
- International student mentors
- Student buddy system
- International student voice members

CO-CURRICULAR SPORTS

- Australian Rules Football
- Soccer
- Cricket
- Badminton
- Tennis, table tennis
- Basketball
- Netball
- Rugby

OTHER CO-CURRICULAR ACTIVITIES

- Music – vocal group, concert bands and ensembles
- Global citizenship and community activities
- Service Learning Change Agents
- Language clubs
- Robotics and arts clubs and more



BLACKWOOD HIGH SCHOOL

bhs.sa.edu.au

Blackwood High School has a strong tradition of academic, sporting and artistic excellence. Located in the foothills of Adelaide only 20 minutes by public transport from the city centre, the school overlooks native bushland and is close to recreational parks, cinemas, good transport and large shopping centres. The Australian Curriculum is delivered to all students in Years 7–10 to prepare them thoroughly for senior high school and the challenges of an emerging, globalised world. The school is also a special interest high school for netball and Australian Rules football and offers flexible pathways for all students.

LOCATION

Southern Adelaide

YEAR OF ESTABLISHMENT

1961

NUMBER OF STUDENTS

1174

YEARS

7–12

INTERNATIONAL PROGRAMS

- Intensive Secondary English Course (ISEC)
- High School Graduate
- High School Study Abroad

SCHOOL FOCUS

- Global community driven
- Creating informed citizens

FACILITIES

- Performing arts centre – auditorium, drama suite
- Visual arts studios – art, design, sculpture
- Trade Training Centre including electrotechnology lab
- Advanced technology facilities – 3D printer, laser cutters, CAD and CAM technologies, programming and robotics
- Sporting facilities – gymnasium, ovals, netball, tennis courts and specialist dance studio
- Imagination Centre – Science, Technology, Engineering and Mathematics (STEM) facility

SPECIAL INTEREST PROGRAMS

- Netball* (Years 7–11)
 - Australian Rules Football* (Years 7–11)
 - Music – bands, orchestra, instrumental tuition, music industry skills
 - Performing arts – drama and dance performances, major bi-annual production
- *Selective entry program

LANGUAGES

- German
- Japanese
- English as an Additional Language (EAL)

SUPPORT SERVICES

- International Student Program manager
- English language support
- International Student Support Officers
- International homework club

CO-CURRICULAR SPORTS

- Athletics – cross-country, track and field
- Australian Rules Football
- Soccer
- Badminton
- Tennis, table tennis
- Basketball
- Netball
- Golf
- Dance
- Orienteering
- Softball
- Volleyball

OTHER CO-CURRICULAR ACTIVITIES

- Student Representative Council – leadership
- Dance, aerobic and hip-hop teams
- Drama club
- Art club
- Debating club
- International badminton



BRIGHTON SECONDARY SCHOOL

brightonss.sa.edu.au

Brighton Secondary School is a large secondary school located approximately 12 kms southwest of the city in a coastal suburb of South Australia. The school provides flexible pathways for students including strong academic opportunities, vocational opportunities and targeted learning support. The school also provides a comprehensive and diverse range of extra-curricular activities for students, through clubs, activities and sporting opportunities, with graduates from the school going on to be a part of some of Australia's best youth orchestra's choirs, bands and the Australian Olympic Men's and Women's Volleyball team.

LOCATION

Southwestern Adelaide

YEAR OF ESTABLISHMENT

1952

NUMBER OF STUDENTS

1700

YEARS

7–12

INTERNATIONAL PROGRAMS

- Intensive Secondary English Course (ISEC)
- High School Graduate
- High School Study Abroad

SCHOOL FOCUS

- Special Interest Music and Volleyball programs
- Formula One (F1) in Schools and subs in schools programs – STEM

FACILITIES

- Performing Arts Centre
- Music centre – orchestra room, sound technology unit
- Concert hall
- Design, photography and media studios
- State Volleyball Centre
- Food and hospitality kitchens
- Sporting facilities – oval, outdoor beach and indoor volleyball courts, gymnasiums

SPECIAL INTEREST PROGRAMS

- Music*
 - Volleyball*
 - Formula One (F1) in Schools Program* – engineering (Year 9–10)
 - Think Bright Program* – higher order thinking and entrepreneurial skills (Years 7–10)
 - Science, Technology, Engineering and Mathematics (STEM) program* (Years 7–10)
- * Selective entry program

LANGUAGES

- French (Years 8–12)
- Japanese (Years 8–12)
- English as an Additional Language (EAL) (Years 11–12)

SUPPORT SERVICES

- International student classroom support
- International Student Program manager
- Youth workers
- Orientation program and buddy system

CO-CURRICULAR SPORTS

- Australian Rules Football
- Tennis
- Basketball
- Netball
- Soccer
- Volleyball

OTHER CO-CURRICULAR ACTIVITIES

- Debating
- Photography
- Creative writing
- Arts



CHARLES CAMPBELL COLLEGE

ccc.sa.edu.au

Charles Campbell College is a comprehensive Reception to Year 12 school comprising Junior School (Reception to Year 6), Middle School (Years 7 to 9) and Senior School (Years 10 to 12). It is located only 9km north-east of the Adelaide city centre. The College has an important focus on Science, Technology, Engineering and Mathematics with university pathways through engineering and sciences. Students may enter the school's STEM Racing Academy and compete at state, national and international competitions.

LOCATION

Eastern Adelaide

YEAR OF ESTABLISHMENT

2012

NUMBER OF STUDENTS

900 (Secondary Sub-School)

YEARS

7–12 (Secondary Sub-School)

INTERNATIONAL PROGRAMS

- Intensive Secondary English Course (ISEC)
- High School Graduate
- High School Study Abroad
- Study Tours

SCHOOL FOCUS

- Visual and performing arts
- Formula One (F1) in Schools program - STEM Racing
- Tertiary education pathways
- STEM vocational education
- Career and transition planning

FACILITIES

- Performing arts centre – dance, drama, music
- Specialist technology facilities – media suite
- Automotive trade training centre
- Technical studies workshops – wood, plastics, electronics, metal, mechanical
- Sporting facilities – gymnasium, health classrooms, playing courts, three ovals
- Commercial kitchen

SPECIAL INTEREST PROGRAMS

- Elite sports – Australian Rules Football Academy*
- Mathematics and science extension program (Years 8–10)
- STEM Racing (Formula One in Schools) Academy

* Selective entry program

LANGUAGES

- Italian
- English as an Additional Language (EAL) (Years 9–12)

SUPPORT SERVICES

- English Language Support
- International Student Program manager
- International student support network
- On-site mental health practitioner and psychologist
- Course and career counselling
- Student development system
- Regulation and wellbeing spaces

CO-CURRICULAR SPORTS

- Australian Rules Football
- Soccer
- Netball
- Volleyball
- Badminton
- Table tennis

OTHER CO-CURRICULAR ACTIVITIES

- Student leadership program
- Community service and engagement
- Camps
- Excursions
- Arts performances
- Music –bands, ensembles, vocal ensemble
- Student-led interest clubs
- Mathematics, science and English competitions



FINDON HIGH SCHOOL

findonhs.sa.edu.au

Findon High School is located western suburbs, 9 kms from the airport and 6 kms from Henley Beach. The school has become a thriving example of multiculturalism at its best and prides itself on inclusion and diversity. The core focus is on empowering students to become literate, independent, numerate, critical, and creative thinkers, which in turn enables them to become positive citizens within our community. Findon High School offers a range of co-curricular programs to support and enhance student learning and outcomes.

LOCATION

Western Adelaide

YEAR OF ESTABLISHMENT

1955

NUMBER OF STUDENTS

300

YEARS

7–12

INTERNATIONAL PROGRAMS

- High School Graduate
- High School Study Abroad

SCHOOL FOCUS

- Creative industries
- Project based Learning
- Literacy and numeracy mastery classes
- Personal and social learning program
- Career pathways program including VET and SACE
- Courtroom classroom
- Ice factor
- 'I love coffee' Findon's enterprise education initiative.

FACILITIES

- Technical college
- Discovery centre
- Flexible learning spaces
- Art studios
- STEAM studio
- Electronic, woodwork and mental workshops
- Computer studios

- Outdoor maker space
- Performing art centre
- Food design and technologies kitchen
- Sporting facilities including gymnasium and multipurpose outdoor court and oval

SPECIAL INTEREST PROGRAMS

- Findon technical college
- Creative industries special interest pathway
- South Australian Aboriginal Secondary Training Academy (SAASTA)

LANGUAGES

- English as an Additional Language support

SUPPORT SERVICES

- International Program support team including dedicated support teacher
- Forest lane (wellbeing and inclusion support)
- Wednesday morning homework and breakfast club
- Student ambassadors

CO-CURRICULAR SPORTS

- Athletics
- Aquatics and water safety
- Zone sport (basketball, soccer and AFL)

OTHER CO-CURRICULAR ACTIVITIES

- Instrumental music
- School productions – musical performances
- Robotics Club
- Student leadership
- Year 7, 9 and 11 camps



GLENUNGA INTERNATIONAL HIGH SCHOOL

gihs.sa.edu.au

Glenunga International High School inspires every student to develop their potential as an internationally minded, creative thinking, responsible citizen. The school is located 6 kms from the city of Adelaide. Glenunga is internationally accredited by the Council of International Schools and has a worldwide reputation for excellence. The curriculum includes the International Baccalaureate Diploma Programme and IGNITE Program for students with high intellectual potential. The sense of community is strong at Glenunga, centred around the school's Values of Excellence^{PB}, Opportunity^U, International Mindedness and Harmony.

LOCATION

Central Adelaide

YEAR OF ESTABLISHMENT

1898

NUMBER OF STUDENTS

2200

YEARS

7-12

INTERNATIONAL PROGRAMS

- Intensive Secondary English Course (ISEC)
- High School Graduate
- Study Tours

SCHOOL FOCUS

- Academic excellence
- International mindedness and student leadership
- Gifted and talented education
- Learning technologies
- Languages
- Mathematics and science
- Performing arts

FACILITIES

- Performing arts centre
- Music and drama studios
- Visual arts and media studies centre
- Health and physical education complex with exercise gymnasium
- Information and communication technology centre

SPECIAL INTEREST PROGRAMS

- International Baccalaureate Diploma Programme (Years 11–12)
- IGNITE – accelerated learning program for gifted and talented students*

* Selective entry program

LANGUAGES

- Chinese
- Japanese
- French
- English as an Additional Language (EAL)

SUPPORT SERVICES

- English language support
- International Student Program manager and team

CO-CURRICULAR SPORTS

- Athletics
- Australian Rules Football
- Soccer
- Badminton
- Table tennis
- Basketball

- Netball
- Cricket
- Triathlon
- Hockey
- Orienteering
- Swimming
- Volleyball
- Surfing
- Mountain biking

OTHER CO-CURRICULAR ACTIVITIES

- International club
- K-pop Dance
- Advocacy clubs
- Chemistry and mathematics clubs
- Chess, debating, cards, origami and games clubs
- Volunteer clubs
- Environmental and volunteer clubs
- Art, music theatre and media clubs
- Manga/Anime flash animation club



GOLDEN GROVE HIGH SCHOOL

goldengrovehs.sa.edu.au

Golden Grove High School is a welcoming and inclusive secondary school located in the north eastern suburbs of Adelaide. Their purpose is to create a learning environment that inspires all students to become collaborative, creative, reflective, resilient and self-motivated. The school is set in a lovely natural environment, with excellent facilities and specialist programs in dance, touch football, Australian Football (AFL) for girls and languages (Spanish and Japanese).

LOCATION

Northeastern Adelaide

YEAR OF ESTABLISHMENT

1989

NUMBER OF STUDENTS

1550

YEARS

7–12

INTERNATIONAL PROGRAMS

- High School Graduate
- High School Study Abroad
- Study Tours

SCHOOL FOCUS

- Languages
- Global perspectives (English and Humanities)
- Science, Technology, Engineering and Mathematics (STEM)
- Visual and performing arts
- Physical education and outdoor education

FACILITIES

- Specialist arts centre-drama and dance
- Visual arts studios
- Science laboratories
- Clean Technology – computer aided design, robotics, electronics, 3D printing
- Material technology – wood, metal, plastic and food
- International facilities
- Middle school building
- Year 12 study centre

- Music and multimedia facilities – recording, production, computer studio, keyboard laboratory, music studio
- Golden Grove Arts and Recreation Centre – gymnasium, courts, performance theatres
- Sporting facilities – ovals, playing courts, 18 hole disc golf course
- Trade training centre
- Wellbeing hub

SPECIAL INTEREST PROGRAMS

- Dance (Year 7-10)
- Touch football (Year 7-11)
- Australian Rules Football for girls (Year 7-10)

LANGUAGES

- English as an Additional Language (EAL)
- Japanese
- Spanish
- Other languages via the School of Languages

SUPPORT SERVICES

- English language support
- International Student Program manager

OTHER CO-CURRICULAR ACTIVITIES

- Wide range of sporting teams and activities
- Lunchtime student led clubs
- Student leadership



HALLETT COVE SCHOOL

hcs.sa.edu.au

Hallett Cove School is a Reception to Year 12 school located in a southern coastal suburb of Adelaide set on an attractive, large campus with scenic views of the ocean. The school offers a varied curriculum with a focus on practical, hands-on subjects that include the local environment, Australian culture and inquiry based thinking.

LOCATION

Southern Adelaide

YEAR OF ESTABLISHMENT

1987

NUMBER OF STUDENTS

1,200 (Secondary sub-school)

YEARS

7–12 (Secondary sub-school)

INTERNATIONAL PROGRAMS

- High School Graduate
- High School Study Abroad
- Study Tours

SCHOOL FOCUS

- Specialist sports – soccer, volleyball
- Recreational studies (outdoor education, aquatics, camping and surfing)
- Marine studies
- TechQuest, Science, Technology, Engineering and Mathematics (STEM)
- Visual and performing arts – dance, music, drama, art
- Dining Down Under (food and hospitality)
- Hair and beauty
- Australian studies

FACILITIES

- Sporting facilities including gymnasiums, courts, ovals, outdoor volleyball courts, outdoor soccer fields
- Art rooms, dance studio, music recording studio with software and drama performance centre
- Basketball courts

- Specialist facilities for fashion and textiles, hospitality and cafe skills, photography, hair salon, language centre
- Specialised STEM suites
- Science laboratories
- Weights room

SPECIAL INTEREST PROGRAMS

- Volleyball* (Years 8–12)
- Soccer* (Years 8–12)
- Marine studies (Years 9–12)
- Hair and beauty (Years 9–12)
- Food and hospitality
- Architecture, advanced manufacturing
- Photography

* Selective entry program

LANGUAGES

- English as an Additional Language (EAL) (for international students only)
- Japanese

SUPPORT SERVICES

- International Student Program manager
- Bilingual support staff
- International Programs community room

- Buddy system for new students
- After school clubs

CO-CURRICULAR SPORTS

- Aquatics – surfing, reef snorkelling, body boarding, windsurfing, kayaking, sailing
- Athletics
- Rugby
- Soccer
- Baseball, softball
- Basketball
- Badminton
- Tennis
- Cricket
- Gymnastics
- Hockey

OTHER CO-CURRICULAR ACTIVITIES

- Bouldering, rock climbing
- School productions – dance, drama, music and visual arts
- School band

CAMPS AND EXCURSIONS

- Regular camps one per term (Caving, Outback, Whale Watching)
- Surfing
- Orienteering bushwalking



HAMILTON SECONDARY COLLEGE

hamcoll.sa.edu.au

Hamilton Secondary College is located in the inner-southern suburbs of Adelaide, just a 11-kilometre drive from the Adelaide CBD. The college is located nearby to public transport, Marion Shopping Centre, Flinders University, Tonsley Innovation Precinct and Glenelg Beach. Hamilton Secondary College is a STEM (Science, Technology, Engineering and Maths) specialist school with exciting facilities to support STEM subjects including a STEM Innovation Wing, Space School and Planetarium. A new Performing Arts Centre has recently been constructed in the school for those interested in Music, Dance and Drama.

LOCATION

Southern Adelaide

YEAR OF ESTABLISHMENT

1958

NUMBER OF STUDENTS

600

YEARS

7–12

INTERNATIONAL PROGRAMS

- International Secondary English Course (ISEC)
- High School Graduate
- High School Study Abroad
- Study Tours

SCHOOL FOCUS

- Science, Technology, Engineering and Mathematics (STEM)
- High expectations and academic excellence
- Space curriculum
- Dance, music and drama
- Sports
- Food and hospitality
- Design and technology
- Visual arts
- High expectations and academic excellence

FACILITIES

- STEM innovation wing
- Planetarium
- 'Mission to Mars' space school
- Performing arts centre
- Gymnasium
- International centre

- Commercial kitchen
- Woodwork and metalwork workshops
- Science laboratories (chemistry, biology and physics)
- Outdoor sporting facilities (basketball courts, soccer pitches, athletics field)
- Weights room
- Canteen
- Visual arts rooms (painting, sculpting, drawing)
- Computer suites
- Senior study centre
- Library

SPECIAL INTEREST PROGRAMS

- Music
- Space academy

LANGUAGES

- Japanese
- English as an Additional Language (EAL)

SUPPORT SERVICES

- Homework club
- English language support
- Buddy program

CO-CURRICULAR SPORTS

- Basketball
- Outdoor Soccer
- Futsal
- Volleyball
- Badminton
- Netball
- Athletics
- Aquatics
- Australian Rules Football
- Cricket
- Touch rugby

OTHER CO-CURRICULAR ACTIVITIES

- Badminton club
- Rock climbing
- Robotics and coding club
- Dance club
- K-Pop club
- Music and arts showcase
- Chess club
- Wellbeing warriors club



HEATHFIELD HIGH SCHOOL

hhs.sa.edu.au

Heathfield High School is a secondary school in the Adelaide Hills with a student cohort of over 1000 students. The school provides innovative and contemporary learning facilities and a range of programs which encourage social integration. The school has a dynamic, richly resourced curriculum and facilities that support a wide-range of future options for young people. They are also nationally recognised as a Special Interest Volleyball and Entrepreneurial Specialist Learning school. Across the year levels, students are encouraged to use critical and creative thinking.

LOCATION

Southeastern Adelaide

YEAR OF ESTABLISHMENT

1963

NUMBER OF STUDENTS

1050

YEARS

7–12

INTERNATIONAL PROGRAMS

- High School Graduate
- High School Study Abroad
- Study Tours

SCHOOL FOCUS

- Innovation in science, mathematics and technology
- Visual and performing arts
- Volleyball
- Outdoor education
- Entrepreneurial thinking
- LIFT - whole school inquiry-based learning program
- Music

FACILITIES

- Performing arts space with dance studio
- Commercial kitchen and restaurant training centre
- Building construction shed
- Computer technology and robotics centre

- Sporting facilities – ovals, gymnasium, soccer field and tennis courts
- Volleyball training centre - indoor courts, beach volleyball courts
- Senior school study area

SPECIAL INTEREST PROGRAMS

- Special interest volleyball* (Years 7–11)
 - Entrepreneurial specialist learning pathway*
 - Advanced technologies – robotics, laser and 3D printing
- * Selective entry program

LANGUAGES

- French
- Japanese

SUPPORT SERVICES

- English language support
- International Student Program manager and assistant
- Student buddy system

CO-CURRICULAR SPORTS*

- Athletics
- Aquatics – swimming, kayaking
- Australian Rules Football
- Soccer
- Touch football
- Badminton
- Tennis, table tennis
- Basketball
- Netball
- Bushwalking
- Cricket
- Cycling
- Rock climbing
- Softball
- Volleyball

* No extra-curricular sports clubs are facilitated by the school.

* The school select teams for term-based statewide sports competitions.

OTHER CO-CURRICULAR ACTIVITIES

- Music – drumming, concert bands, swing band, vocal ensembles, choir



HENLEY HIGH SCHOOL

henleyhs.sa.edu.au

Henley High School is located in the seaside suburb of Henley Beach, less than 1km from the beach, 5 kms from the airport and 10 kms from the city of Adelaide. Henley High School is highly regarded for their focus on literacy, numeracy, internationalism and STEM. The school also has a Sports Academy that includes specialist entry programs for high achieving student athletes in 10 different sports. International students are supported by a committed team of staff.

LOCATION

Western Adelaide

YEAR OF ESTABLISHMENT

1958

NUMBER OF STUDENTS

1500

YEARS

7– 12

INTERNATIONAL PROGRAMS

- Intensive Secondary English Course (ISEC)
- High School Graduate
- High School Study Abroad
- Study Tours

SCHOOL FOCUS

- Academic excellence
- Internationalism
- Sports academy and student athlete development
- Science, Technology, Engineering and Mathematics (STEM)
- The Arts
- Information and communication technology

FACILITIES

- Fully-equipped industrial kitchens
- Performing arts centre – music and dance studios
- Purpose built STEM centre
- Senior student study centre
- Sporting facilities – high performance sports centre, gymnasium, ovals, tennis courts

- Trade training centre – wood, metal, engineering and electronics workshops
- Supported learning centre disability unit
- Flexible learning options centre
- Visual arts and media studies suites

SPECIAL INTEREST PROGRAMS

- Sports academy*
 - Performing arts
 - STEM
 - Advanced engineering
- * Selective entry program

LANGUAGES

- Japanese (Years 8–12)
- English as an Additional Language (EAL) (Years 9–11)
- Essential English (dedicated English additional language Year 12)

SUPPORT SERVICES

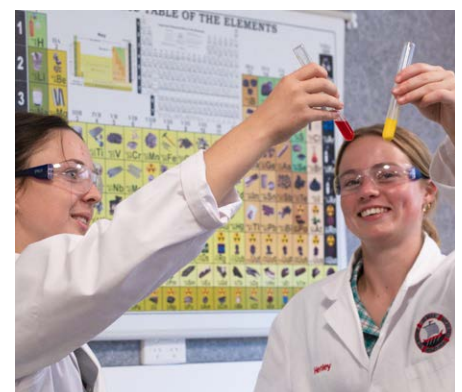
- English language support
- International Student Program manager
- Mentoring program
- Student buddy system

CO-CURRICULAR SPORTS

- Athletics
- Basketball
- Cricket
- Dance
- Football (Australian Rules Football)
- Hockey
- Netball
- Soccer
- Surf life saving and swimming
- Tennis

OTHER CO-CURRICULAR ACTIVITIES

- Music – concert band, ensembles
- Various clubs, groups and events including science and mathematics, chess, wellbeing and more



MARRYATVILLE HIGH SCHOOL

marryatvillehs.sa.edu.au

Marryatville High School is located 4 km from the Adelaide city centre nestled amongst gum trees. The school has an innovative and exciting diverse curriculum in a learning environment that promotes academic excellence and supports all students in reaching their potential. Marryatville High School has special interest music and tennis programs. The music program is an award-winning program recognised both nationally and internationally. The special interest tennis school has been operational since 1995, this program allows students to combine academic school studies, with high-level tennis coaching.

LOCATION

Eastern Adelaide

YEAR OF ESTABLISHMENT

1976

NUMBER OF STUDENTS

1700

YEARS

7–12

INTERNATIONAL PROGRAMS

- Intensive Secondary English Course (ISEC)
- High School Graduate
- High School Study Abroad
- Study Tours

SCHOOL FOCUS

- Special interest music and tennis programs
- Advanced Technology Program (ATP) and Science, Technology, Engineering and Mathematics (STEM)
- International student centre with dedicated study rooms and an International support teacher
- International SRC and International Ambassadors
- Visual arts and performing arts focus-state of the art theatre
- Extensive co-curricular program

FACILITIES

- Special interest music centre
- Performing arts theatre
- Specialist facilities – art, computer-aided design
- Industry standard hospitality centre

- Sporting facilities – gymnasium, cricket pitch, ovals, tennis courts
- Eden Park campus – senior school, international student centre
- Science laboratories and learning area

SPECIAL INTEREST PROGRAMS

- Music*
 - Tennis*
- * Selective entry program

LANGUAGES

- Japanese
- French
- English as an Additional Language (EAL)

SUPPORT SERVICES

- English language support
- International Student Program manager and team
- Wellbeing leaders and youth workers
- Pastoral care program responsive to cultural needs
- Bilingual support services
- International student centre

CO-CURRICULAR SPORTS

- Aquatics – swimming
- Athletics – cross country, triathlon
- Australian Rules Football
- Soccer
- Touch football
- Badminton
- Tennis
- Basketball
- Netball
- Cricket
- Mountain biking
- Hockey
- Orienteering
- Volleyball

OTHER CO-CURRICULAR ACTIVITIES

- Chess and debating clubs
- Music – orchestra, concert, jazz, guitar and vocal ensembles, instrumental tuition, choirs
- Sporting tours
- Japanese club
- Fashion club
- Book club
- Writer's club



MITCHAM GIRLS HIGH SCHOOL

mitchamgirlshs.sa.edu.au

Mitcham Girls High School is an inclusive environment centred around progressive learning and academic excellence. The school offers a wide range of subjects, opportunities, and co-curricular activities. Mitcham Girls High School fosters a positive learning environment; cultivates community connections; encourages personal excellence and promotes opportunities available to women in our society. The school works to develop positive and authentic learning environments that reflect the embedded school values of Belong, Grow, and Achieve.

LOCATION

South Central Adelaide

YEAR OF ESTABLISHMENT

1964

NUMBER OF STUDENTS

790

YEARS

7–12

INTERNATIONAL PROGRAMS

- Intensive Secondary English Course (ISEC)
- High School Graduate
- High School Study Abroad
- Study Tours

SCHOOL FOCUS

- Girls' education
- Diverse, welcoming, multicultural community
- Science, Technology, Engineering and Mathematics (STEM)
- Gifted and talented dance program
- The Arts (performing, visual, music, dance)
- Leadership opportunities + community connections
- Global citizenship

FACILITIES

- Millhouse centre (STEM and visual arts learning spaces)
- Specialist dance studios
- Performing arts centre (fully equipped theatre)
- Specialist facilities for visual arts, photography, home economics, ceramics, textiles and multimedia
- Technologies hub (metalwork, woodwork, electronics, coding and 3-D printing)

- Sporting facilities – half Olympic-sized swimming pool, gymnasium, tennis courts, hockey oval, fitness centre equipped with workout equipment
- Tennis/netball courts
- Resource centre
- Senior study areas

SPECIAL INTEREST PROGRAMS

- Specialised dance (Years 7–10)*
- School Pathways Programs: Electrotechnology (Career Start) – Certificate II, and Health Services Assistance – Certificate III
- STEM Pathways: Guaranteed Entry into Engineering at Flinders University

* Selective entry program

LANGUAGES

- French
- Italian
- English as an Additional Language (EAL)
- Partnership with the School of Languages for other languages

SUPPORT SERVICES

- International Student Program manager
- Mentor program
- Wellbeing Leaders, Youth Workers & Social Workers
- Homework help

CO-CURRICULAR SPORTS

- Swimming
- Badminton
- Basketball
- Netball
- Soccer
- Athletics
- Volleyball

OTHER CO-CURRICULAR ACTIVITIES

- Student leadership opportunities (e.g. SRC, Future Thinkers, Youth Opps, Zonta programs, World Challenge)
- Music and performing arts opportunities (school musical, concert/rock band, instrumental music tuition, choir)
- STEM professional development programs (STEM Girls Academy, STEM Sista, Women in STEM, Robotics)
- Zone sport competitions
- Subs in schools technology challenge (maritime engineering, hydrodynamics, coding and electronics)
- Debating and public speaking groups
- Variety of clubs (drama club, art club, LGBTQIA+ club)



MODBURY HIGH SCHOOL

modburyhs.sa.edu.au

Modbury High School is located 15 km north-east of Adelaide, on spacious, picturesque grounds containing extensive sporting facilities. It is close to the Adelaide foothills and the River Torrens, recreational parks, a major shopping and cinema complex and public transport to the city centre. The school offers a comprehensive curriculum and is known for its strong tradition of academic excellence leading to university entrance. It also provides opportunities to undertake alternative pathways including vocational training and employment. In addition, Modbury High School has a proud history of achievement in many other fields including sports, Pedal Prix and band musicianship.

LOCATION

Northern Adelaide

YEAR OF ESTABLISHMENT

1965

NUMBER OF STUDENTS

890

YEARS

7–12

INTERNATIONAL PROGRAMS

- High School Graduate
- High School Study Abroad
- Study Tours

SCHOOL FOCUS

- Academic achievement
- Mathematics and science
- Technology and The Arts

FACILITIES

- Science, Technology, Engineering and Mathematics (STEM) centre
- Visual arts centre
- Performing arts auditorium
- Library
- Green room for filming
- Sporting facilities including gymnasium, oval and sports fields
- Year 12 study and recreation area
- Year 7 hub

SPECIAL INTEREST PROGRAMS

- Music – musicianship, ensemble, composing and arranging, performance
- Basketball
- Pedal prix
- Formula One (F1) in Schools program

LANGUAGES

- Japanese
- Spanish
- English as an Additional Language (EAL)
- Other languages are available with School of Languages

SUPPORT SERVICES

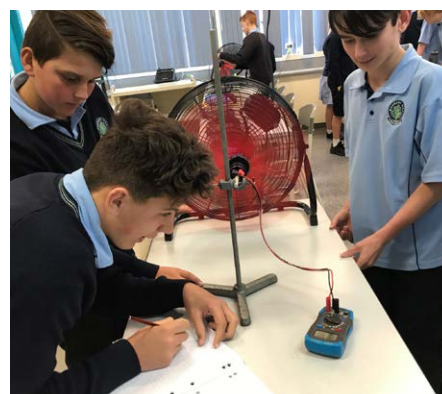
- English language support
- International Student Program manager
- Student buddy system

CO-CURRICULAR SPORTS

- Australian Rules football, soccer, touch football
- Badminton, tennis, table tennis
- Baseball, softball
- Basketball, netball
- Cricket
- Volleyball

OTHER CO-CURRICULAR ACTIVITIES

- Music – school bands, classical guitar ensemble, vocal ensemble
- Pedal Prix (engineering skills) team
- Homework club
- STEM club
- Artswell – after school



NORWOOD INTERNATIONAL HIGH SCHOOL

nihs.sa.edu.au

Norwood International High School is nestled in the leafy eastern suburbs of Adelaide, just 8 kilometres from the city centre. Our diverse student community, representing a wide range of cultural and linguistic backgrounds, fosters a spirit of mutual respect and learning. This rich environment is supported by a curriculum that actively promotes international-mindedness and a globally focused education. Norwood International High School is among the few in South Australia to offer the International Baccalaureate Middle Years Programme (Years 7–10), followed by either the South Australian Certificate of Education or the International Baccalaureate Diploma Programme (Years 11–12).

INTERNATIONAL PROGRAMS

- Intensive Secondary English Course (ISEC)
- High School Graduate
- High School Study Abroad
- Study Tours
- Study Abroad

SCHOOL FOCUS

- Science, Technology, Engineering and Mathematics (STEM)
- Language learning
- Visual arts and performing arts
- Accounting, business and legal studies
- Outdoor education
- Over 125 subject offerings for students in Years 11–12
- IBDP & SACE Pathways

FACILITIES

- Performing arts centre – large hall, drama spaces
- Student-run VIBE Café
- Sporting facilities – gymnasium, cricket nets, ovals, tennis and basketball courts
- Student Growth Hub and International Student Program office
- Two storey Innovation Hub
- Electro-technology and electronics workshop

SPECIAL INTEREST PROGRAMS

- International Baccalaureate Middle Years Program (Years 7–10)
 - International Baccalaureate Diploma Program (Years 11–12)
 - Specialist rowing pathway* (Years 7–9)
 - Specialist Italian Immersion pathway* (Years 7–9)
 - STEM pathway* (Years 7–9)
 - Pedal Prix
 - Outdoor and environmental education - orienteering, bushwalking, rock climbing, canoeing, aquatics (Years 9–12)
- *Selective entry program

LANGUAGES

- Greek
- German
- Italian
- Chinese continuers and background
- Japanese continuers
- Japanese beginners (Years 11–12)
- English as an Additional Language (EAL)

SUPPORT SERVICES

- English language support

LOCATION

Eastern Adelaide

YEAR OF ESTABLISHMENT

1910

NUMBER OF STUDENTS

1650

YEARS

7–12

- International Student Program manager and team
- Bilingual teaching staff
- Wellbeing Hub
- Homestay Support

CO-CURRICULAR SPORTS

- Athletics
- Australian Rules Football
- Soccer
- Badminton
- Tennis
- Basketball
- Netball
- Cricket
- Rowing
- Volleyball

OTHER CO-CURRICULAR ACTIVITIES

- International student leaders and ambassadors
- International Student Prefect
- Debating, public speaking, mock trials
- International Student Club
- A range of lunchtime clubs
- Music - bands and ensembles, including Drum Corps
- Excursions - explore Adelaide, South Australia.
- Cultural events



PARA HILLS HIGH SCHOOL

phhs.sa.edu.au

Para Hills High School is located 17 kilometres north of Adelaide, near Parafield Airport and the University of South Australia's Mawson Lakes campus. The school is close to public transport, parks and large community shopping centres. Para Hills High School offers special interest programs in digital technologies and the arts, providing students with industry-level skills in state-of-the-art facilities. The international program gives students opportunities to access scholarships for overseas study and interact with international peers. With a wide range of co-curricular and extra-curricular activities, Para Hills High School aims to help every student find their 'niche' and foster a strong sense of belonging.

LOCATION

Northern Adelaide

YEAR OF ESTABLISHMENT

1973

NUMBER OF STUDENTS

564

YEARS

7–12

INTERNATIONAL PROGRAMS

- High School Graduation
- High School Study Abroad
- Study Tours

SCHOOL FOCUS

- Respect, community, perseverance
- Academic excellence
- Unlocking potential
- Arts company
- Science, Technology, Engineering and Mathematics (STEM)

FACILITIES

- Ovals
- Gymnasium
- Indoor soccer
- Basketball courts
- Performing arts centre
- CAD/CAM and 3D design lab
- Visual arts and media studies suite
- Specialist science lab
- School library with ICT facilities
- Industrial kitchens
- Refurbished wellbeing Hub
- Senior students study area
- Trade training centre
- Supported inclusion hub

SPECIAL INTEREST PROGRAMS

- Robotics, 3D printing, virtual reality, cybersecurity and artificial intelligence (Years 7–10)*
- Para Hills performing arts company – make productions from start to finish; undertake different roles, developing relevant skills and knowledge for performing arts pathways, work with the local community, engagement with contemporary practitioners and industry professionals (Years 7–10)*
- South Australian Aboriginal Secondary Training Academy (SAASTA)

* Selective entry program

LANGUAGES

- Japanese (Years 7–10)
- English as an Additional Language (EAL)
- Essential English
- General English

SUPPORT SERVICES

- International Student Program manager
- Student buddy system
- Ongoing EAL support
- Career counselling team

- School counselling, including student social workers.
- STARRS and reconnect services on site.
- STARS foundation mentoring support for Aboriginal young women
- Transition Support Services for senior students
- SAASTA academy, hosting students from PHHS and surrounding schools
- Individual and small group tutoring

CO-CURRICULAR SPORTS

- Regional, state and international sporting competitions
- Regular athletics carnivals

OTHER CO-CURRICULAR ACTIVITIES

- Music, school band
- Various clubs including dance, art, science, mathematics, wellbeing
- Student leadership - participate in decision-making at school
- Regional, state and international sporting competitions
- Regular athletics carnivals



PARAFIELD GARDENS HIGH SCHOOL

pghs.sa.edu.au

Parafield Gardens High School is a culturally diverse and welcoming school situated 17 kms north of Adelaide, providing an attractive environment for studying. Students can choose to study specialist sport and dance, outdoor education, music, food, and technology subjects such as computing, engineering, game design, woodwork, plastics, metalwork and multimedia. Students have the option to study Japanese to year 12, or to study home languages including Khmer, Vietnamese, Arabic, Nepali or Farsi in partnership with the School of Languages.

LOCATION

Northern Adelaide

YEAR OF ESTABLISHMENT

1976

NUMBER OF STUDENTS

1200

YEARS

7–12

INTERNATIONAL PROGRAMS

- Intensive Secondary English Course (ISEC)
- High School Graduate
- High School Study Abroad
- Study Tours

SCHOOL FOCUS

- Diverse, welcoming, multicultural community
- Academic achievement
- Specialist sport and dance
- Comprehensive wellbeing support

FACILITIES

- Spacious gym
- Dance studios
- Science, Technology, Engineering and Mathematics (STEM) facilities
- Undercover outdoor sports area
- Digital tech/gaming design studio

SPECIAL INTEREST PROGRAMS

- Specialist soccer
- Dance

LANGUAGES

- German
- Japanese
- Partnership with the School of Languages for other languages including Khmer, Vietnamese, Nepali, Arabic, Farsi

SUPPORT SERVICES

- Multicultural youth workers: Vietnamese, Khmer, Farsi/Dari/Hazaragi, Burmese/Chin Hakka
- Wellbeing team
- Additional learning support in after school learning hub
- English as an Additional Language (EAL) classes at all levels
- Multicultural drop in space at recess and lunch

CO-CURRICULAR SPORTS

- Volleyball
- Australian Rules Football
- Netball
- Badminton

OTHER CO-CURRICULAR ACTIVITIES

- Student leadership group
- Music



PARALOWIE R-12 SCHOOL

web.paralowie.sa.edu.au

Paralowie R-12 School is a large Reception to Year 12 school in the northern suburbs. It provides a supportive environment for learning and teaching, with a focus on achievement, excellence and success for all in life, learning and citizenship. The school works in partnership with the community to provide an education that equips students with the skills, knowledge, understanding, and values to actively participate in, and contribute to a productive and rewarding life in society.

LOCATION

Northern Adelaide

YEAR OF ESTABLISHMENT

1995

NUMBER OF STUDENTS

1463 (Secondary sub-school)

YEARS

7–12 (Secondary sub-school)

INTERNATIONAL PROGRAMS

- High School Graduate
- High School Study Abroad
- Study Tours

SCHOOL FOCUS

- Academic excellence
- Reading and writing skills in all subjects (Learning Areas)
- Vocational Education and Training (VET)
- Physical health and volleyball
- Design & technology
- Digital technology learning support for students in need

FACILITIES

- Performing arts centre
- Resource centre
- Wellbeing hub
- Gym
- Design & technologies building
- EAL Space
- Weights room
- Regulation room

SPECIAL INTEREST PROGRAMS

- Volleyball program*
- Vocational Education and Training – health and community services, plumbing provided at the school*
- Vocational Education and Training – over 30 other courses provided in collaboration with other Northern Adelaide schools
- Stage 2 chemistry and physics at the University of South Australia (foundation for studying Science in university)

* Selective entry program

LANGUAGES

- Targeted English as an Additional Language (EAL) Support (Years 7-9)
- English as an Additional Language (EAL) (Years 10-12)

SUPPORT SERVICES

- English language support
- International Student Program manager
- Wellbeing support
- Weekly homework club
- Weekly senior school support sessions

OTHER CO-CURRICULAR ACTIVITIES

- Art club
- Arts showcase
- Gardening group
- English & languages showcase
- Fundraisers for theme weeks, such as Harmony Week
- Maths Olympics
- Multicultural week fashion parade
- Student voice
- School sports, such as cricket, beach soccer, and beach volleyball
- Volleyball



PLYMPTON INTERNATIONAL COLLEGE

plymptoncollege.sa.edu.au

Plympton International College caters for students in Reception to Year 12 and is located in the south-western suburbs between the Adelaide city centre and the popular tourist beach of Glenelg. As the Chinese Bilingual College in South Australia, students have the opportunity to become fluent in both English and Chinese language. At Plympton International College, students have the opportunity to excel through academic and vocational pathways that will lead them to tertiary study and training at both university and/or TAFE.

LOCATION

Southwestern Adelaide

YEAR OF ESTABLISHMENT

1998

NUMBER OF STUDENTS

580 (Secondary sub-school)

YEARS

7–12 (Secondary sub-school)

INTERNATIONAL PROGRAMS

- High School Graduate
- High School Study Abroad
- Study Tours

SCHOOL FOCUS

- Academic achievement
- Specialist health and medical science/research program, in partnership with University of South Australia
- Global education: specialist Chinese Bilingual program
- Science, Technology, Engineering and Mathematics (STEM)
- Student leadership

FACILITIES

- Purpose built STEM facilities
- Design and innovation studio
- Industry standard health and medical training skills centre
- Multimedia theatre
- Performance arts centre
- Home economics centre
- Sporting facilities – gymnasium, multi sports courts, oval, cricket nets, tennis courts

SPECIAL INTEREST PROGRAMS

- Specialist health and medical science/research program (in partnership with University of South Australia)
 - Specialist Chinese bilingual program*
 - Science, Technology, Engineering and Mathematics (STEM)
 - Surf camp
- * Selective entry program

LANGUAGES

- Chinese bilingual program (Mandarin)
- Chinese for background speakers
- Hindi for background speakers
- English as an Additional Language (EAL)

SUPPORT SERVICES

- International Student Program manager
- Chinese bilingual support officers

CO-CURRICULAR SPORTS

- Australian Rules Football
- Touch football
- Soccer
- Badminton
- Tennis, table tennis
- Basketball
- Netball
- Volleyball, beach volleyball
- Surfing
- Aquatics

OTHER CO-CURRICULAR ACTIVITIES

- Student Representative Council (SRC)
- Debating club and public speaking
- Festival of Music choir
- Music – instrumental tuition, string orchestra, concert and rock bands
- State and national competitions



REYNELLA EAST COLLEGE

reynellaec.sa.edu.au

Reynella East College is one of South Australia's largest government schools, offering a dynamic and enriching study abroad or graduate program experience for international students. The campus is equipped with world class facilities designed to foster learning, creativity, and physical development. From modern classrooms and science laboratories to extensive sports complexes and art studios, Reynella East College provides an environment where students can thrive. With a dedicated International centre with kitchen and buddy support through the International Ambassador Program, the international students feel welcomed and supported throughout their educational experience.

LOCATION

Southern Adelaide

YEAR OF ESTABLISHMENT

1980

NUMBER OF STUDENTS

1500

YEARS

7–12 (Secondary sub-school)

INTERNATIONAL PROGRAMS

- Intensive Secondary English Course (ISEC)
- High School Graduate
- High School Study Abroad
- Study Tours

SCHOOL FOCUS

- Academic excellence
- Specialist sports program – basketball, volleyball, netball, Australian Rules Football and soccer
- Outdoor education – hiking, surfing and camping
- Specialist arts and music program – visual arts and design, film making, dance and vocal training
- Innovators and business specialist programs – STEM and industry partnerships
- Food and hospitality
- Languages – German, French and Japanese
- Student wellbeing

FACILITIES

- Designated international centre with fully equipped kitchen and international office
- Large sporting ovals

- Open planned learning spaces to promote collaboration, critical thinking and personalised learning
- Advanced technology facilities – 3D printer, laser cutters, CAD and CAM technologies, programming and robotics
- Computing
- Dance and drama studios
- Music suites
- Science laboratories
- Professional commercial kitchen
- Hairdressing salon
- Weight training centre
- Automotive workshop
- Construction trades training centre
- Wayikuu Centre - a brand new, international standard four-court gymnasium facility
- Café and barista course

SPECIAL INTEREST PROGRAMS

- Sports academy*
- Arts academy*
- Innovators academy*

* Selective entry program

LANGUAGES

- Japanese
- German
- French
- English as an Additional Language (EAL) (Years 10–12)

SUPPORT SERVICES

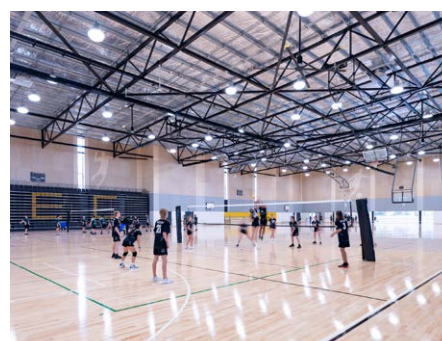
- English language support
- International Student Program manager and team
- International Ambassador Student Buddy program
- Wellbeing counsellors, mental health workers and in-school psychologist

CO-CURRICULAR SPORTS

- Volleyball
- Basketball
- Soccer
- Netball
- Karate
- Judo
- Track and field
- Australian Rules Football
- Golf (club nearby)
- E-Sports

OTHER CO-CURRICULAR ACTIVITIES

- School band
- Vocal ensemble
- Drama performances
- Arts productions
- Student leadership
- Overseas trips
- Anime and manga club
- Barista course



ROMA MITCHELL SECONDARY COLLEGE

rmsc.sa.edu.au

Roma Mitchell Secondary College consists of a Senior Campus, a Middle School Campus, Girls' Campus and a Special Campus all on one site. The school is located only 12 kms from the Adelaide city centre. Roma Mitchell Secondary College is an International Baccalaureate school delivering the Middle Years Program from Years 7 to 10. The school also offers the International Baccalaureate Diploma Program in addition to the South Australian Certificate of Education (SACE) to Year 11 and 12 students.

LOCATION

Northern Adelaide

YEAR OF ESTABLISHMENT

2011

NUMBER OF STUDENTS

1650

YEARS

7–12

INTERNATIONAL PROGRAMS

- High School Graduate
- High School Study Abroad
- Study Tours
- Teacher Exchange Program

SCHOOL FOCUS

- International mindedness
- Diversity
- Internationalism
- International Baccalaureate and Australian curriculum
- South Australian Certificate of Education (SACE)
- Sport
- Academic and vocational pathways
- Sports Academy

FACILITIES

- Performing arts - music, dance and drama studios
- State of the art science labs
- Sporting facilities- gymnasiums, soccer pitches, basketball, netball and tennis courts, cricket nets and ovals
- Commercial kitchen, hospitality centre and kitchens
- Woodwork and metal workshops including 3D printing
- State of the Art Sports Academy Centre

- Art rooms and photographic suites
- Digital tech/ Computer-Aided Design (CAD) rooms

SPECIAL INTEREST PROGRAMS

- International Baccalaureate Middle Years Program (Years 7–10)
- International Baccalaureate Diploma Program (Years 11–12)
- Sports academy - soccer, Australian Rules Football Women's, cricket, volleyball, basketball

LANGUAGES

- Japanese
- German
- Italian
- Hindi

SUPPORT SERVICES

- English language support
- International Student Program manager
- Bilingual support officers
- International Student Ambassadors
- Mental health services
- Wellbeing services

CO-CURRICULAR SPORTS

- Australian Rules Football
- Badminton
- Basketball
- Cricket
- Netball
- Soccer
- Volleyball
- Athletics
- Softball
- Hockey
- Cycling
- Pickleball
- Frisbee golf

OTHER CO-CURRICULAR ACTIVITIES

- Musical theatre club
- STEM competitions
- Cultural celebrations
- Acceleration and Enrichment Programs
- High Performance Programs in Physical Education
- Homework club
- Student leadership
- Music tutoring
- Debating club
- Lunchtime activities



SALISBURY EAST HIGH SCHOOL

sehs.sa.edu.au

Salisbury East High School is located in the northern suburbs, 18km from the Adelaide city centre. The aims of the academic, vocational and co-curricular programs at Salisbury East High School are built on the school's vision, which places great emphasis on excellence and all students realising their potential. The school believes that student wellbeing complements academic success and as such has a strong focus on positive education.

LOCATION

Northern Adelaide

YEAR OF ESTABLISHMENT

1966

NUMBER OF STUDENTS

1000

YEARS

7-12

INTERNATIONAL PROGRAMS

- High School Graduate
- High School Study Abroad
- Study Tours

SCHOOL FOCUS

- Student wellbeing
- Quality teaching and learning
- Creative arts
- Science, Technology, Engineering and Mathematics (STEM)
- Academic and vocational pathways

FACILITIES

- Creative arts centre
- Trade training centre
- E-learning room
- Sporting facilities – gymnasium, ovals, tennis courts
- Year 12 study area
- International room

SPECIAL INTEREST PROGRAMS

- Elite physical education program* (Years 9–11)
- Music
- STEM (Years 8–12)
- Specialised soccer program (Years 8–12)

* Selective entry program

LANGUAGES

- Japanese
- English as an Additional Language (EAL) (Years 11–12)

SUPPORT SERVICES

- English language support
- International Student Program manager and team

CO-CURRICULAR SPORTS

- Athletics
- Australian Rules Football
- Soccer
- Rugby
- Basketball
- Netball
- Cricket
- Tennis
- Volleyball

OTHER CO-CURRICULAR ACTIVITIES

- Aerobics group
- Dance – hip hop
- Music – instrumental tuition, bands, ensemble groups, choirs
- Homework club
- Robotics



SEAFORD SECONDARY COLLEGE

seafordhs.sa.edu.au

Seaford Secondary College is located in the southern suburbs of Adelaide, just 1.5 km from some of the most beautiful surf beaches in Australia and 36 kms from the Adelaide city centre. The school caters for students in Years 7 to 12 and provides an environment for quality education so students can prepare for the future and their lifelong learning journey.

LOCATION

Southern Adelaide

YEAR OF ESTABLISHMENT

1996

NUMBER OF STUDENTS

850

YEARS

7–12

INTERNATIONAL PROGRAMS

- High School Graduate
- High School Study Abroad
- Study Tours

SCHOOL FOCUS

- Science, Technology, Engineering and Mathematics (STEM)
- The Arts – music, drama, visual art, dance
- Sport – volleyball and soccer
- Outdoor education
- Aquatics – surfing, snorkelling, kayaking
- Accelerated literacy and science
- Wellbeing and pathway

FACILITIES

- Performing arts centre – dance, music and drama suites
- Visual arts and media studies suites
- Engineering and technology centres
- Sporting facilities – gymnasiums, oval, outdoor education facilities, volleyball and beach volleyball courts, basketball and netball courts

- Food and hospitality kitchens
- International suite
- Library with access to 3D printers and other electronic resources
- Digital learning technology

SPECIAL INTEREST PROGRAMS

- Science, Technology, Engineering and Mathematics (STEM)
- Aquatics – surfing, snorkelling, kayaking
- Volleyball (Years 9–12)
- Soccer (Years 9–12)
- Performing arts (Years 8–12)

LANGUAGES

- Japanese (Years 7–9)
- Spanish (Years 7–9)
- English as an Additional Language (EAL) (Years 8–12)

SUPPORT SERVICES

- English language support
- International student house coordinator
- International student ambassadors and buddy system
- Regular celebrations of cultural events and achievements
- Wellbeing leaders

CO-CURRICULAR SPORTS

- Aquatics – surfing, surf lifesaving
- Volleyball
- Soccer
- Australian Rules Football
- Soccer
- Badminton
- Basketball
- Netball
- Cricket
- Sport day

OTHER CO-CURRICULAR ACTIVITIES

- Drama, dance and choreography groups
- Music – bands, ensembles, instrumental tuition
- Lunchtime clubs
- SRC – student voice



SEATON HIGH SCHOOL

seatonhs.sa.edu.au

Seaton High School is located approximately 15 minutes west of Adelaide's city centre and only 5 minutes from the beach and the recreational environment of West Lakes. For more than 55 years, Seaton High School has been providing inspiring, life-relevant education to its students, and has grown to become a leader in innovation, and authentic student-centre learning. As a recognised Entrepreneurial Specialist School, Seaton High School is a vibrant hub for entrepreneurial learning where students enjoy richer experiences, tailored learning pathways, and a world-relevant curriculum.

LOCATION

Western Adelaide

YEAR OF ESTABLISHMENT

1946

NUMBER OF STUDENTS

1000

YEARS

7–12

INTERNATIONAL PROGRAMS

- High School Graduate
- High School Study Abroad
- Study Tours

SCHOOL FOCUS

- Entrepreneurial ways of doing and thinking
- Critical and creative thinking skills
- Problem solving skills
- Wellbeing as integral to success
- Development of students who are principled, grounded and socially responsible.

FACILITIES

- A Science, Technology, Engineering and Technology (STEM) facility
- Specialist visual and performing arts spaces
- Multimedia suite
- Performance studio
- Gymnasium and diamond sports training and fitness centre
- Home economics kitchens

- Tennis, basketball, netball and handball courts
- Wellbeing hub
- Entrepreneurial hub
- Research hub

SPECIAL INTEREST PROGRAMS

- Entrepreneurial specialist program including visual art and innovation, emerging technologies and Students with High Intellectual Potential (SHIP) strands
- Diamond sports - baseball, softball

LANGUAGES

- Japanese

SUPPORT SERVICES

- English language support
- Wellbeing hub
- International Student Program manager

CO-CURRICULAR SPORTS

- Australian Rules Football
- Baseball
- Basketball
- Soccer
- Softball

OTHER CO-CURRICULAR ACTIVITIES

- Student leadership
- Robotics club
- Visual and performing arts clubs
- Volunteering and community service



THEBARTON SENIOR COLLEGE

tsc.sa.edu.au

Thebarton Senior College is a specialist Senior Secondary College offering students a rewarding and engaging educational experience. Located only 4 kms from the city of Adelaide, the college is a centre for learning where students from diverse backgrounds undertake studies in South Australian Certificate of Education, or specialist English Language programs. It is the only senior secondary United Nations Global Peace School in South Australia and actively teaches peace-building and community responsibility in the curriculum.

LOCATION

Western Adelaide

YEAR OF ESTABLISHMENT

1990

NUMBER OF STUDENTS

1000

YEARS

11–12

INTERNATIONAL PROGRAMS

- High School Graduate
- Study Tours

SCHOOL FOCUS

- Specialist senior secondary college
- United Nations Global Peace school
- South Australian Certificate of Education (SACE)
- English language programs

FACILITIES

- Gymnasium and weights room
- Student kitchen and cafeteria with hot food
- Specialist curriculum facilities, including science laboratories, art, design and technology workshops, performing arts spaces, gymnasium, photography and video production
- Quiet study and group working spaces for students
- Excellent information technology facilities

SPECIAL INTEREST PROGRAMS

- Wide range of South Australian Certificate of Education (SACE) subjects available
- Twilight SACE classes available
- Pathways into vocational education and training programs
- Engineering and construction program

LANGUAGES

- English as An Additional Language (EAL)

SUPPORT SERVICES

- English language support
- Study support available throughout the day
- International Student Program manager
- Student services and counselling team, supporting wellbeing, study and career planning
- Bilingual school support officers

CO-CURRICULAR SPORTS

- Badminton
- Basketball
- Volleyball
- Weight training
- Futsal

OTHER CO-CURRICULAR ACTIVITIES

- International students club
- Student leadership groups, including Student Voice and Rotaract
- Student interest clubs, including board games, creative writing, digital media, drama, entrepreneur, pythagorean, art, and science, technology, engineering and mathematics (STEM)
- Language clubs, including Italian and Japanese
- Music clubs, including drumming and guitar
- Gym and weights room available during break times, including women-only days



UNDERDALE HIGH SCHOOL

underdale.sa.edu.au

Underdale High School is nestled in spacious grounds adjoining the river parklands, just 5 km west of the Adelaide city centre and 10 km from the sea with some of Adelaide's best sandy white beaches. The school provides a student-centred learning experience for Years 7–12, attracting students from a diverse 99 cultural backgrounds. Quality differentiated teaching and a targeted support program ensures all students benefit from educational challenges that meet their learning needs. Student wellbeing is a priority for all staff. Underdale High School offers a range of programs and initiatives for students including soccer, automotive technology and Cyber Security Program.

LOCATION

Western Adelaide

YEAR OF ESTABLISHMENT

1965

NUMBER OF STUDENTS

650

YEARS

7–12

INTERNATIONAL PROGRAMS

- Intensive Secondary English Class (ISEC)
- High School Graduate
- High School Study Abroad
- Study Tours

SCHOOL FOCUS

- English as an Additional Language (EAL)
- Thinking skills and learning methodologies
- Visual and performing arts
- Automotive trade
- Soccer academy
- Science, Technology, Engineering and Mathematics (STEM)
- Project 'U' - Developing skills and dispositions of effective learners, career pathways and child protection curriculum (continuous program from years 7 to 12)

FACILITIES

- Automotive trade training centre
- Sporting facilities – gymnasium, tennis courts, oval, Australian Rules Football pitches, soccer pitches, weights room, netball and basketball courts, artificial turf

- Senior school study centre
- Science, Technology, Engineering and Mathematics (STEM) centre/Robotics
- Creative art centre, music, art, drama, theatre
- Lumination lab/ digital technology/ laser cutter/ 3D printer
- Hacking playground

SPECIAL INTEREST PROGRAMS

- International football (soccer) academy – preparing students for the world scene*
- Food processing
- Tennis Academy
- Surf excursions
- Cyber security
- Automotive

* Selective entry program

LANGUAGES

- Greek
- Japanese
- English as an Additional Language (EAL)

SUPPORT SERVICES

- English language support
- International Student Program manager and team
- Bilingual support officers
- Student buddy system
- Wellbeing team

CO-CURRICULAR SPORTS

- Athletics
- Australian Rules Football
- Soccer, futsal
- Basketball
- Netball
- Cricket
- Volleyball
- Ice factor (ice hockey)

OTHER CO-CURRICULAR ACTIVITIES

- Music – instrumental and voice tuition, bands
- Outdoor education and adventure skills
- Community and enterprise opportunities
- Student voice
- Student run activities (clubs)



UNLEY HIGH SCHOOL

uhs.sa.edu.au

Unley High School is an inner suburban high school located just 6km from the Adelaide city centre. The school is close to many parks, recreational and sporting facilities as well as speciality shops, restaurants and other amenities. Unley High School has a proud tradition of academic excellence and fosters a culture and ethos based upon care, compassion and respect for others. The school delivers engaging educational programs which enable international students to successfully complete their SACE. The dedicated international program team at Unley High School supports a fluid transition into South Australian education while encouraging students to build strong relationships with their peers, teachers, and wider community.

LOCATION

Southeastern Adelaide

YEAR OF ESTABLISHMENT

1910

NUMBER OF STUDENTS

1570

YEARS

7–12

INTERNATIONAL PROGRAMS

- Intensive Secondary English Course (ISEC)
- High School Graduate
- High School Study Abroad
- Study Tours

SCHOOL FOCUS

- Academic excellence
- Student engagement and achievement
- Community based activities
- Languages
- Rowing

FACILITIES

- Performing arts centre
- Sporting facilities – gymnasium, playing fields
- Rowing facilities

SPECIAL INTEREST PROGRAMS

- French bilingual/binational Program
- Rowing
- Outdoor education
- Design and architecture
- Food and hospitality
- Fashion design

LANGUAGES

- French
- Greek
- Italian
- Chinese
- English as an Additional Language (EAL)

SUPPORT SERVICES

- International Student Program manager
- International Student officer
- Student buddy system
- English language support

CO-CURRICULAR SPORTS

- Athletics
- Aquatics
- Australian Rules football, soccer, rugby, touch football
- Badminton, tennis, table tennis
- Baseball, softball
- Basketball, netball
- Cricket
- Cycling
- Rowing
- Surfing
- Volleyball

OTHER CO-CURRICULAR ACTIVITIES

- Student voice council
- Debating and public speaking clubs
- Music – instrumental tuition, bands, ensembles, choir
- Dungeons & Dragons club
- Newsletter club



VALLEY VIEW SECONDARY SCHOOL

valleyview.sa.edu.au

Valley View Secondary School is uniquely placed, with the school boasting the tranquillity of a semi-secluded garden setting, beautiful grounds, dynamic learning spaces and state of the art facilities. Valley View Secondary School empowers students to thrive as confident and resilient learners through values-based education, academic rigour and high expectations. The school is committed to creating a learning environment that values each and every student as an individual and strives to meet their unique needs and interests.

LOCATION

Northeastern Adelaide

YEAR OF ESTABLISHMENT

1973

NUMBER OF STUDENTS

530

YEARS

7–12

INTERNATIONAL PROGRAMS

- High School Study Abroad
- High School Graduate
- Study Tours

SCHOOL FOCUS

- Academic excellence and maximising achievement potential
- The Arts, including performing arts, visual arts and Digital Arts
- Specialist mathematics, science, physics
- Learning technologies including digital technology and cyber security

FACILITIES

- Learning hub
- Performing arts centre
- Music rooms

SPECIAL INTEREST PROGRAMS

- Outdoor education offering numerous camps to South Australian and Interstate National Parks
- Advanced cyber security program in conjunction with Adelaide Institute of Business and Technology
- Italian outdoor program
- Sister school in Italy

LANGUAGES

- Italian
- Punjabi

SUPPORT SERVICES

- International Student Program manager
- English as an Additional Language (EAL) classes
- Literacy support teachers
- Homework club
- Bilingual student support officers
- Community liaison officers
- Extensive wellbeing support

CO-CURRICULAR SPORTS

- Sports lunchtime clubs - including boxing, fitness, European handball, hockey, netball, basketball, Australian football, soccer, cricket

OTHER CO-CURRICULAR ACTIVITIES

- Italian radio programs –
- Student-run newsletter club
- The Valley Garden Horticultural club
- Lunchtime clubs offered all week including chess, Lego, jewellery and craft, art, K-Pop, dance



WIRREANDA SECONDARY SCHOOL

wirreandasecondary.sa.edu.au

Wirreanda Secondary School focuses on high expectations, innovation and improvement for all students. The school's central purpose is to develop students' learning and wellbeing, driven by continuous improvement of teachers and leaders, and fostering genuine student engagement. The school values of respect, honesty, responsibility and achievement encapture the daily actions and directions. Wirreanda ensures all students have opportunities to succeed and graduate as well-rounded individuals who contribute to their community. Located in Adelaide's southern suburbs with good public transport access, Wirreanda is recognized as one of South Australia's premier specialist sports schools and offers a wide range of programs providing meaningful pathways to students.

LOCATION

Southern Adelaide

YEAR OF ESTABLISHMENT

1977

NUMBER OF STUDENTS

970

YEARS

7–12

INTERNATIONAL PROGRAMS

- High School Study Abroad
- Study Tours

SCHOOL FOCUS

- Literacy and numeracy
- Learner wellbeing
- Sports and physical education

FACILITIES

- Theatre
- Learning hub
- Science, Technology, Engineering and Mathematics (STEM) Spaces
- Designated senior learning space for Year 11 and 12 students
- Home economics spaces with commercial kitchen
- Sporting facilities, including gymnasium, cricket nets, oval, basketball courts, weights room and climbing wall

- Woodwork and metalwork facilities
- Art facilities
- Trade training centre
- Wirreanda Adaptive
- Disability unit

SPECIAL INTEREST PROGRAMS

- Specialist sports course
- Music tuition

LANGUAGES

- Auslan (Australian sign language) (Year 8)
- Aboriginal Contexts
- English as an Additional Language (EAL)

SUPPORT SERVICES

- English as an Additional Language (EAL) Support
- International Student Program manager
- Learner Wellbeing team

OTHER CO-CURRICULAR ACTIVITIES

- Peer mentors and student captains
- Australian army cadets
- Vocal ensemble
- Schools challenge



WOODVILLE HIGH SCHOOL

woodvillehigh.sa.edu.au

Established in 1915, Woodville High School has provided education for over 109 years. The school is guided by its vision: A human-centred learning community that nurtures belonging, transformative growth and success for every learner. Following the motto “Ad Astra Per Aspera” (to Reach for the Stars), the school strives for excellence and aspires for all students to embrace their innate gifts and thrive as global citizens. Located in the western suburbs, Woodville High School is an active member of the City of Charles Sturt with a vibrant Old Scholar community. The school’s multicultural environment, with students from over 80 different cultures, is one of its greatest strengths. Through the curriculum, students learn to appreciate different perspectives, interact respectfully with others, and take responsible action.

LOCATION

Western Adelaide

YEAR OF ESTABLISHMENT

1915

NUMBER OF STUDENTS

1253

YEARS

7–12

INTERNATIONAL PROGRAMS

- Intensive Secondary English Course (ISEC) including ISEC EAL (English as an Additional Language), ISEC Literacy, ISEC HASS (Humanities and Social Sciences) and ISEC Science
- High School Graduate
- High School Study Abroad
- Study Tours

SCHOOL FOCUS

- A range of SACE flexible industry pathways package for students from Year 10
- Music
- Science, Technology, Engineering and Mathematics (STEM)
- Students with high intellectual potential have the opportunity to be accelerated through the Astra Program
- Visual and performing arts

FACILITIES

- Aboriginal and Torres Strait Islander cultural centre international hub
- Dance studios and drama centre
- Performing arts centre
- Sporting facilities - playing courts, weights room and access to the St Clair Sports Centre
- Trade training centre

SPECIAL INTEREST PROGRAMS

- The Special Interest Music program - recognised both nationally and internationally as a centre of excellence for nearly 50 years
- Football (soccer) academy - In partnership with Adelaide United Football Club
- Basketball academy - In partnership with the Adelaide 36ers
- ASTRA program (Years 8-10)*
- Food and hospitality

LANGUAGES

- Indonesian
- Vietnamese
- English as an Additional Language (EAL)

SUPPORT SERVICES

- Bilingual support officers
- English language support
- International Student Program manager
- Student buddy system
- Wellbeing team

CO-CURRICULAR SPORTS

- Australian Rules Football
- Badminton
- Basketball
- Bush walking
- Fitness centre
- Football (soccer)
- Kayaking
- Rugby
- Swimming
- Tennis

OTHER CO-CURRICULAR ACTIVITIES

- Chess
- Community choir
- Dance
- Debating
- Drama
- Dungeons and Dragons
- Magazine club
- Virtual Reality club







ADELAIDE METROPOLITAN PRIMARY SCHOOLS

ADELAIDE METROPOLITAN PRIMARY SCHOOLS

1	Bellevue Heights Primary School	P 57
2	Blackwood Primary School	P 58
3	Charles Campbell College	P 59
4	Clapham Primary School	P 60
5	Clovelly Park Primary School	P 61
6	Coromandel Valley Primary School	P 62
7	East Torrens Primary School	P 63
8	Forbes Primary School	P 64
9	Hallett Cove School	P 65
10	Highgate School	P 66
11	Kilkenny Primary School	P 67
12	Lockleys Primary School	P 68
13	Paradise Primary School	P 69
14	Paralowie R-12 School	P 70
15	Plympton International College	P 71
16	Reynella East College	P 72
17	Richmond Primary School	P 73
18	St Leonards Primary School	P 74
19	Sturt Street Community School	P 75
20	Thorndon Park Primary School	P 76
21	Vale Park Primary School	P 77
22	West Beach Primary School	P 78



BELLEVUE HEIGHTS PRIMARY SCHOOL

bellevueps.sa.edu.au

Bellevue Heights Primary School is situated in the foothills of Adelaide, adjacent to Flinders University and Flinders Medical Centre and Hospital. The school is just 15 minutes from the city and only 5 minutes from a major shopping centre in the suburb of Marion. The multicultural nature of the school enhances wellbeing and fosters global understanding and inquiry as students learn about caring for the world and its people. There is a strong focus on literacy and numeracy development with extensive early intervention support where identified. Learning outcomes are extended through the use of technology including Lego robotics, animated movie making, innovative computer software programs and interactive programs.

INTERNATIONAL PROGRAMS

- Primary School
- Primary School Study Abroad

SCHOOL FOCUS

- Academic excellence
- Literacy and mathematics
- Cultural diversity
- Science, Technology, Engineering, Mathematics (STEM)
- Robotics program
- Student leadership programs
- Inquiry-based learning
- Nature play

FACILITIES

- Extensive grounds including vegetable gardens, fruit trees, chickens
- STEM rooms with robotics equipment
- 3D printers
- New resource centre
- Gymnasium
- Languages
- French

SUPPORT SERVICES

- International student support manager and team
- Support for students who have learnt English as a second language
- Out of School Hours Care (OSHC) including holiday program.

LOCATION

Eastern Adelaide

YEAR OF ESTABLISHMENT

1977

NUMBER OF STUDENTS

185

YEARS

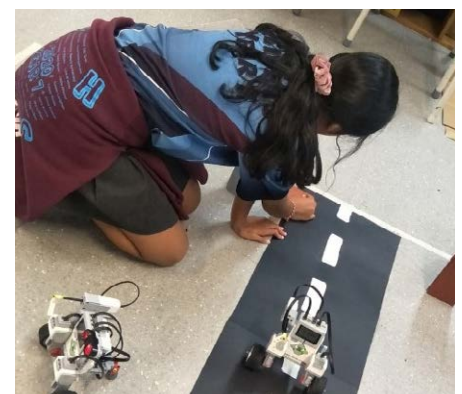
Reception – 6

CO-CURRICULAR SPORTS

- Cricket
- Netball
- Soccer
- Basketball
- Athletics
- Swimming
- Cross country running

OTHER CO-CURRICULAR ACTIVITIES

- Robotics state competitions
- Musical instrument tuition – piano, strings, guitar
- Leadership skills program – park rangers, gardening club, student representative council
- Code camp



BLACKWOOD PRIMARY SCHOOL

blackwoodps.sa.edu.au

Blackwood Primary School is a Reception to Year 6 school located in the picturesque Mitcham Hills, south of Adelaide city. The school is well serviced by public transport and is just 13km from Adelaide CBD. The school provides a spacious environment for students to learn in, including 5 hectares of landscaped school grounds and outdoor classroom and learning spaces. The school has a focus on academic excellence and promotes international mindedness and student leadership.

LOCATION

Southern Adelaide

YEAR OF ESTABLISHMENT

1928

NUMBER OF STUDENTS

410

YEARS

Reception – 6

INTERNATIONAL PROGRAMS

- Primary School
- Primary School Study Abroad
- Study Tours

SCHOOL FOCUS

- International mindedness and student leadership
- Academic excellence
- Student agency
- Performing arts
- Science
- Physical education
- Japanese language

FACILITIES

- Large school grounds
- Gym/hall
- Out of School Hours Care (OSHC) room
- Outdoor classroom and learning area
- Playgrounds

SPECIAL INTEREST PROGRAMS

- International Baccalaureate Primary Years Programme

LANGUAGES

- Japanese
- English as an Additional Language (EAL)

SUPPORT SERVICES

- English language support
- International Student Program team

CO-CURRICULAR SPORTS

- Basketball
- Soccer
- Netball
- Cricket

OTHER CO-CURRICULAR ACTIVITIES

- Debating
- Green team (school garden)
- Performing arts – instrumental music, choir
- Language leaders
- Student action team (SAT)
- Children's University



BROOKLYN PARK PRIMARY SCHOOL

brooklynparkps.sa.edu.au

Brooklyn Park Primary School is a friendly, community-minded school located in the western suburbs of Adelaide just 7 km from the central business district and immediately adjacent to the Adelaide Airport. The school offers a learning program that comprehensively covers the Australian Curriculum in a smaller school environment.

LOCATION

Western Adelaide

YEAR OF ESTABLISHMENT

1916

NUMBER OF STUDENTS

110

YEARS

Reception – 6

INTERNATIONAL PROGRAMS

- Primary School
- Primary School Study Abroad
- Study Tours

SCHOOL FOCUS

- Literacy and numeracy
- IT focus with 1:1 laptops in years 3-7 and iPads from Reception to year 2.
- Specialist subjects including PE, Performing Arts, Science and Italian
- Berry St education model

FACILITIES

- Large oval – equipped with toilets, soccer goals, football goals and a netball court.
- Gymnasium – full size basketball court, permanent stage, full kitchen.
- Vegetable gardens
- Large sandpit
- Outdoor stage
- 2 large playgrounds
- Outdoor basketball court and handball courts

LANGUAGES

- Italian

SUPPORT SERVICES

- English language support
- International Student Program manager
- International student support
- Student buddy system
- Out of School Hours Care (OSHC) service
- Student wellbeing support officer

CO-CURRICULAR SPORTS

- Athletics
- Aquatics (year 6)
- Swimming (Reception to year 5)

OTHER CO-CURRICULAR ACTIVITIES

- Student representative council
- Tree planting
- Recycling program
- Lunch clubs – paper planes and boardgames
- Breakfast club
- Access to specialist sports coaches
- Specialist music lessons



CHARLES CAMPBELL COLLEGE

ccc.sa.edu.au

Charles Campbell College is a comprehensive Reception to Year 12 school, comprising of Junior School (Reception to Year 6), Middle School (Years 7 to 9) and Senior School (Years 10 to 12). The college is located just 9km from Adelaide CBD and has easily-accessible public transport and a major shopping centre nearby. The college provides a comprehensive, high-quality curriculum, with a focus on literacy and numeracy, creative and critical thinking and visual and performing arts. The college also has great facilities including a performing arts centre, sporting facilities and extensive school grounds for outdoor activities and sports.

INTERNATIONAL PROGRAMS

- Primary School
- Study Tours

SCHOOL FOCUS

- Literacy and numeracy
- STEM focused problem solving
- Visual and performing arts

FACILITIES

- Reception to Year 6 library
- Performing arts centre – dance, drama, music
- Sporting facilities – gymnasium, health classrooms, playing courts, ovals
- Science laboratories
- Food technology spaces
- Stephanie Alexander kitchen garden and orchard
- Outdoor kitchen space

LANGUAGES

- Italian

SUPPORT SERVICES

- English language support
- International Student Program manager
- International student support network
- Student buddy system
- Out of School Hours Care Service (OSHC)
- On-site psychologist
- Peer mentor development program

LOCATION

Eastern Adelaide

YEAR OF ESTABLISHMENT

2012

NUMBER OF STUDENTS

270 (Primary sub-school)

YEARS

Reception – 6
(Primary sub-school)

CO-CURRICULAR SPORTS

- Basketball
- Netball

OTHER CO-CURRICULAR ACTIVITIES

- Instrumental music
- Performing arts events
- Student leadership program
- Community service



CLAPHAM PRIMARY SCHOOL

claphamps.sa.edu.au

Clapham Primary School is situated in the Adelaide foothills, approximately 12km from the Adelaide city centre. The school offers students a caring and nurturing learning environment where the individual needs and interests of each child are valued and built upon. The expansive bushland setting and school grounds provide additional opportunities for learning and curriculum extension. Bus and train lines provide easy access to and from the city.

LOCATION

Southern Adelaide

YEAR OF ESTABLISHMENT

1961

NUMBER OF STUDENTS

250

YEARS

Reception – 6

INTERNATIONAL PROGRAMS

- Primary School
- Primary School Study Abroad

SCHOOL FOCUS

- Student wellbeing
- Education for sustainability including Eco-Schools Program
- Science, Technology, Engineering and Mathematics (STEM)
- Excellence in literacy and numeracy
- Music, drama and visual art
- Environment
- Digital Technologies

FACILITIES

- Beautiful and spacious school grounds
- Library
- Sporting facilities including large ovals, soccer pitch, gymnasium and basketball courts
- Specialist music area
- Specialist STEM facilities
- Indigenous garden and garden club
- Bring Your Own Laptop program (Years 3-6)
- Canteen

LANGUAGES

- Japanese
- English as an Additional Language (EAL)

SUPPORT SERVICES

- English language support
- International Student Program manager
- Parent participation – reading, canteen, resource centre, excursions, special days
- Student buddy system
- Out of School Hours Care service (OSHC)

CO-CURRICULAR SPORTS

- Athletics
- Aquatics
- Cricket
- Netball
- Soccer
- Swimming

OTHER CO-CURRICULAR ACTIVITIES

- Chess club
- Gardening and environmental groups
- Music – instrumental and singing
- Drama



CLOVELLY PARK PRIMARY SCHOOL

clovellyps.sa.edu.au

Clovelly Park Primary School is a Reception to Year 6 school located 10km south of Adelaide CBD. It is close to Flinders University, Flinders Hospital and a major shopping and entertainment complex. The school has a strong focus on developing positive and caring relationships within the school community, which has resulted in improved participation and engagement in the learning programs. Students are also able to participate in a number of pursuits including performing arts and sports. The school enjoys the support of an active parent body which supports student participation in learning programs and other activities.

INTERNATIONAL PROGRAMS

- Primary School
- Primary School Study Abroad
- Study Tours

SCHOOL FOCUS

- Literacy
- Numeracy
- Performing arts
- Student wellbeing and inclusion
- Intercultural understanding

FACILITIES

- Information technology room
- Resource centre
- Gymnasium, oval and sports courts
- Spacious grounds and playgrounds
- Vegetable garden connected to classroom learning
- Access to digital devices in classrooms

LANGUAGES

- Indonesian

LOCATION

Southern Adelaide

YEAR OF ESTABLISHMENT

1995

NUMBER OF STUDENTS

240

YEARS

Reception – 6

SUPPORT SERVICES

- Bilingual support officers
- Student support officers
- Daily breakfast program
- Out of School Hours Care (OSHC) service

OTHER CO-CURRICULAR ACTIVITIES

- Performing arts
- School choir
- Wakakirri
- A range of sporting competitions throughout the year



COROMANDEL VALLEY PRIMARY SCHOOL

coromandps.sa.edu.au

Coromandel Valley Primary School is located in the picturesque Adelaide Hills, nestled in a bushland environment. The school is an accredited International Baccalaureate World school in the Primary Years Programme. This International Baccalaureate program provides an excellent framework for delivering all aspects of the Australian Curriculum, encouraging academic rigour, inquiry and investigation. All students participate in specialist subjects; physical education, Japanese, performing arts, science and a dance program.

LOCATION

Southern Adelaide

YEAR OF ESTABLISHMENT

1877

NUMBER OF STUDENTS

470

YEARS

Reception – 6

INTERNATIONAL PROGRAMS

- Primary School
- Primary School Study Abroad
- Study Tours

SCHOOL FOCUS

- Student wellbeing
- Literacy and numeracy
- Inquiry-based learning
- Digital learning
- Sport

FACILITIES

- Extensive school grounds
- School hall and gymnasium
- Information technology suite
- Make and Design room for creative problem solving
- Music suite
- Vegetable garden and school orchard

SPECIAL INTEREST PROGRAMS

- International Baccalaureate Primary Years Programme

LANGUAGES

- Japanese

SUPPORT SERVICES

- English language support
- International Student Program manager
- Student buddy system
- Out of School Hours Care (OSHC) service

CO-CURRICULAR SPORTS

- Australian Rules Football
- Soccer
- Cricket
- Netball
- Basketball

OTHER CO-CURRICULAR ACTIVITIES

- Dance program
- Jump rope team (Years 5–6)
- Chess
- Music - choir, instrumental music



EAST TORRENS PRIMARY SCHOOL

etorrensp.s.a.edu.au

East Torrens Primary School is located in the suburb of Hectorville, South Australia, and is a short 15-minute drive from the centre of Adelaide. The school provides opportunities for students to develop their knowledge, personal qualities and deepen their understanding in a positive, safe and challenging way enabling them to achieve at their highest potential. East Torrens is a school rich in cultural diversity and built on four core values - Respect, Excellence, Empathy and Community.

LOCATION

Northeastern Adelaide

YEAR OF ESTABLISHMENT

2001

NUMBER OF STUDENTS

345

YEARS

Reception – 6

INTERNATIONAL PROGRAMS

- Primary School Study Abroad
- Short stay enrolments
- Immersion in classes / Australian culture

SCHOOL FOCUS

- 1:1 devices (Chromebooks)
- Science, Technology, Engineering and Maths (STEM)
- Literacy
- Numeracy
- Instrumental music
- Physical education
- Student wellbeing
- Diversity & inclusion

FACILITIES

- Spacious grounds and updated playgrounds
- Gymnasium
- Resource centre (Library)
- Language/music room
- Sensory rooms
- Nature play area
- Garden / fruit trees

SPECIAL INTEREST PROGRAMS

- PE/health
- Italian
- Science/STEM
- Music

LANGUAGES

- Italian
- First Language Maintenance (FML) for Hindi/Punjabi

SUPPORT SERVICES

- OSHC service
- Pastoral care
- Intensive English learning centre
- Wellbeing 'nest'
- Bilingual Student Support Officers (BSSO)
- Student support officers
- English as an Additional Language (EAL)

CO-CURRICULAR SPORTS

- South Australian Primary Schools Amateur Sports Association (SAPSASA)
- Water safety program
- Aquatics program (Year 6)
- Basketball
- Soccer
- Rugby
- Bike education

OTHER CO-CURRICULAR ACTIVITIES

- Choir (Festival of Music)
- Wheels Wednesday,
- Lego club
- Chess club
- Music club
- SRC (Student Representative Committee)
- Buddy classes
- International competitions and assessments for schools
- School crossing monitors



FORBES PRIMARY SCHOOL

forbesps.sa.edu.au

Forbes Primary School, located on Adelaide's outskirts in a welcoming residential area, prides itself on diversity, with 34 nationalities represented among students. The school emphasizes reading development alongside personalised learning approaches, supported by modern facilities, outdoor spaces, and innovative technology. Strong support is provided for new students, including language assistance. Students engage in cultural, charity, and community programs, building skills for lifelong learning. Forbes also offers various extracurricular activities, creating a vibrant, inclusive community where students thrive academically, socially, and as enthusiastic readers.

LOCATION

Southwestern Adelaide

YEAR OF ESTABLISHMENT

1952

NUMBER OF STUDENTS

235

YEARS

Reception – 6

INTERNATIONAL PROGRAMS

- Primary School
- Primary School Study Abroad
- Study Tours

SCHOOL FOCUS

- Community involvement
- Personalised learning approaches
- Connecting with the environment
- Literacy
- Mathematics

FACILITIES

- Beautiful and spacious school grounds
- Library
- Sporting facilities including large ovals, soccer pitch, gymnasium and basketball courts
- Specialist STEM facilities
- Indigenous garden and garden club
- Nature play spaces
- Interoception sensory space

SPECIAL INTEREST PROGRAMS

- Specialist physical education, science and performing art programs
- Breakfast club
- Onsite grow wellbeing program
- Sport programs
- Choir
- Literacy focus: InitialLit/MultiLit – synthetic phonics program
- After school sports – basketball, soccer, cricket, volleyball

LANGUAGES

- Indonesian
- English as an Additional Language (EAL)

SUPPORT SERVICES

- Breakfast club
- Wellbeing program
- Out of School Hours Care (OSHC) service

CO-CURRICULAR SPORTS

- Specialist physical education
- Cricket
- Volleyball
- Soccer
- Basketball

OTHER CO-CURRICULAR ACTIVITIES

- Science and performing arts programs
- Choir
- Minecraft club



HALLETT COVE SCHOOL

hcs.sa.edu.au

Hallett Cove School is a Reception to Year 12 school located in a southern coastal suburb of Adelaide and set on an attractive, large campus with scenic views of the ocean. The school curriculum emphasises the importance of learning within local and global communities. The school also offers specialised programs for international students, allowing them to gain more knowledge of the Australian environment, culture and recreation.

LOCATION

Southern Adelaide

YEAR OF ESTABLISHMENT

1987

NUMBER OF STUDENTS

340 (Primary sub-school)

YEARS

Reception – 6
(Primary sub-school)

INTERNATIONAL PROGRAMS

- Primary School
- Primary School Study Abroad
- Study Tours

SCHOOL FOCUS

- Literacy and numeracy
- Health and wellbeing
- Positive relationships and interaction
- Swimming lessons

FACILITIES

- Resource centre/library
- Early years learning centre
- Multi-purpose sports and activities hall
- Sporting facilities including gymnasiums, courts and football/cricket ovals
- Art centre and music suites
- Dance studio and drama centre
- Japanese language classrooms
- Nature playgrounds

LANGUAGES

- Japanese
- English as an Additional Language (EAL)

SUPPORT SERVICES

- English language support
- International Student Program manager and team
- Bilingual support staff
- Parent participation - classroom programs, sports, excursions, fundraising and school events
- Buddy system for new students
- Out of School Hours Care (OSHC) service

CO-CURRICULAR SPORTS

- Athletics
- Aquatics
- Australian Rules Football
- Touch football
- Cricket
- Netball
- Swimming
- Surfing

OTHER CO-CURRICULAR ACTIVITIES

- Music – Junior choir, concert band
- Student leadership team
- Dance, drama, music performances
- Arts and crafts activities
- Variety of specialty clubs



HIGHGATE SCHOOL

highgates.sa.edu.au

Highgate School is situated in Highgate, an established eastern suburb of the city of Adelaide, approximately 6km from the city centre. The school has recently completed a significant redevelopment and opened two new buildings, as well as several new play spaces. Highgate School values honesty, integrity, respect and kindness and enjoys the support of a strong community and staff.

LOCATION

Eastern Adelaide

YEAR OF ESTABLISHMENT

1923

NUMBER OF STUDENTS

620

YEARS

Reception – 6

INTERNATIONAL PROGRAMS

- Primary School
- Primary School Study Abroad

SCHOOL FOCUS

- Learning
- Community
- Wellbeing
- Environment

FACILITIES

- Recently redeveloped buildings and play spaces
- School canteen

SPECIAL INTEREST PROGRAMS

- International Baccalaureate Primary Years Programme

LANGUAGES

- French bilingual/binational program
- Chinese Mandarin
- Intensive English classes*

* Eligible visa holders

SUPPORT SERVICES

- English as a Second Language (ESL) support
- International Student Program manager
- Student buddy system
- Out of School Hours Care (OSHC)

CO-CURRICULAR SPORTS

- Cricket
- Softball/tee-ball
- AFL Football
- Soccer
- Hockey/minkey
- Basketball
- Volleyball
- Netball

OTHER CO-CURRICULAR ACTIVITIES

- Music program
- Sports program
- Robotics
- Pedal prix



KILKENNY PRIMARY SCHOOL

kilkennyc7.sa.edu.au

Kilkenny Primary School is a multicultural school located only 7kms northwest of the Adelaide city centre, with easy access to both train and bus services. The school is committed to providing a safe and supportive learning environment for all, through a community focussed approach. It offers a challenging curriculum with a high level of teaching and learning support. Kilkenny Primary School caters to the social and learning needs of all students from many diverse cultural backgrounds. There is a strong focus on languages through an inquisitive and community minded approach, and an ongoing focus on environmental education - utilising our school grounds, and kitchen garden program.

INTERNATIONAL PROGRAMS

- Primary school
- Primary school study abroad
- Study tours

SCHOOL FOCUS

- Evidenced based teaching strategies
- Professional teaching teams
- Whole school approach to curriculum, teaching and learning - R-2 Phonics program, 3-6 spelling program and 5-day maths cycle
- Diversity, belonging and inclusion
- Student agency and wellbeing

FACILITIES

- Stephanie Alexander kitchen garden program and facilities
- Scrub and wetlands area with nature play
- Vegetable gardens
- Orchard with chickens
- Multipurpose gym
- Two sporting ovals
- Preschool
- Canteen (Tuesday to Thursday)

LANGUAGES

- Indonesian

SUPPORT SERVICES

- Wellbeing – whole School friendship and mental health programs
- Bilingual support
- Out of School Hours Care (OSHC) service
- Breakfast club Tuesday and Friday
- Pastoral care support
- Smith Family homework club
- Intensive English Support program
- Parent learning workshops
- Student buddy program across year levels
- Small group social skill development
- Community breakfast once a term

LOCATION

Northwestern Adelaide

YEAR OF ESTABLISHMENT

1889

NUMBER OF STUDENTS

483

YEARS

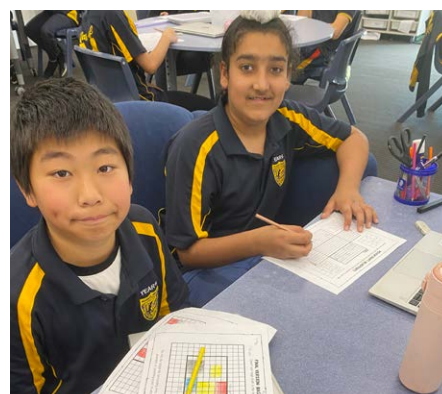
Preschool – 6

CO-CURRICULAR SPORTS

- Cricket
- Netball
- Volleyball
- Basketball
- Football
- Athletics
- Soccer

OTHER CO-CURRICULAR ACTIVITIES

- Music – guitar, brass, violin
- ICT Club
- Lunch-time clubs
- Upper primary school camps



PARADISE PRIMARY SCHOOL

paradiser6.sa.edu.au

Paradise Primary School is situated on picturesque grounds located 10 kms from the city. Beautiful gum trees grace the outdoor spaces and shelter many species of Australian birds and a few Koalas. The school learning spaces are open, flexible and spacious with capacity for over 300 students. Paradise Primary School has strong community connections, working collaboratively with students, families and local organisations. The school also supports local businesses wherever possible to ensure students have the best possible learning opportunities and resources available.

LOCATION

Northeastern Adelaide

YEAR OF ESTABLISHMENT

1978

NUMBER OF STUDENTS

130

YEARS

Reception – 6

INTERNATIONAL PROGRAMS

- Primary School
- Primary School Study Abroad
- Study Tours

SCHOOL FOCUS

- Literacy
- Language
- Science, Technology, Engineering and Mathematics (STEM)
- Specialist physical education
- Art

FACILITIES

- Library resource centre
- Activity hall and gym
- Outdoor learning areas - sandpit, nature play and mud kitchen
- Extensive garden areas and play facilities
- Sporting facilities including soccer and football fields
- Vegetable garden and fruit trees
- Kitchen classroom

LANGUAGES

- Auslan (Australian sign language)

SUPPORT SERVICES

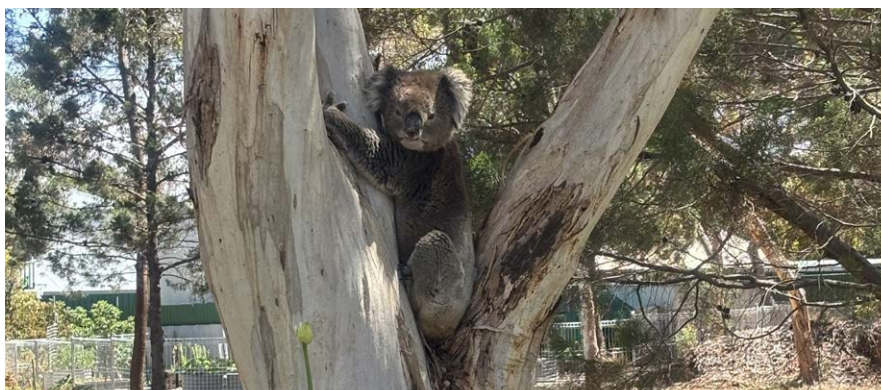
- Intensive Primary English Course (IPEC)
- English language support
- Pastoral care worker
- Literacy intervention
- COACH mentor program

CO-CURRICULAR SPORTS

- Basketball
- Karate and judo

OTHER CO-CURRICULAR ACTIVITIES

- Student leaders voted by students
- Children's University



PARALOWIE R-12 SCHOOL

web.paralowie.sa.edu.au

Paralowie R-12 School is a large Reception to Year 12 school in the northern suburbs. It provides a supportive environment for learning and teaching, with a focus on achievement, excellence and success for all in life, learning and citizenship. The school works in partnership with the community to provide an education that equips students with the skills, knowledge, understanding, and values to actively participate in, and contribute to, a productive and rewarding life in society.

INTERNATIONAL PROGRAMS

- Primary School
- Primary School Study Abroad

SCHOOL FOCUS

- Quality learning
- Student leadership
- Literacy
- Numeracy

FACILITIES

- Extensive grounds
- Activity hall / gymnasium
- Outdoor learning area
- Community centre
- Performing arts centre

- Resource centre
- Wellbeing hub
- Illumination STEM lab
- English as an Additional Language (EAL) Hub
- Interoception room

LANGUAGES

- Kurna language program

SUPPORT SERVICES

- Breakfast club
- Homework club
- Student leadership groups

CO-CURRICULAR SPORTS

- Volleyball academy

LOCATION

Northern Adelaide

YEAR OF ESTABLISHMENT

1995

NUMBER OF STUDENTS

475 (Primary sub-school)

YEARS

Reception – 6
(Primary sub-school)

OTHER CO-CURRICULAR ACTIVITIES

- STEM club
- Tournament of minds (debating)
- Wakakirri National Story-Dance Festival & festival of music (choir, performing arts)
- Year 6 leaders
- Zen Zone (mindfulness group)



PLYMPTON INTERNATIONAL COLLEGE

plymptoncollege.sa.edu.au

Plympton International College caters for students in Reception to Year 12 and is located in the south-western suburbs between the Adelaide city centre and the popular tourist beach of Glenelg. As the Chinese Bilingual College in South Australia, students have the opportunity to become fluent in both English and Chinese languages.

LOCATION

Southwestern Adelaide

YEAR OF ESTABLISHMENT

1998

NUMBER OF STUDENTS

302 (Primary sub-school)

YEARS

Reception–6
(Primary sub-school)

INTERNATIONAL PROGRAMS

- Primary School
- Primary School Study Abroad
- Study Tours

SCHOOL FOCUS

- Academic achievement
- Literacy and numeracy
- Global education: English Chinese Bilingual curriculum
- Science, Technology, Engineering and Mathematics (STEM)
- Student leadership
- Classroom Music program
- Performing Arts program

FACILITIES

- Purpose built STEM facilities
- Design and innovation studio
- Performing arts centre
- Home economics centre
- Specialist play equipment
- Sporting facilities – gymnasium, multi sports courts, oval, cricket nets, tennis courts

SPECIAL INTEREST PROGRAMS

- Specialist Chinese Bilingual Program

LANGUAGES

- Chinese Mandarin
- English as an Additional Language (EAL)

SUPPORT SERVICES

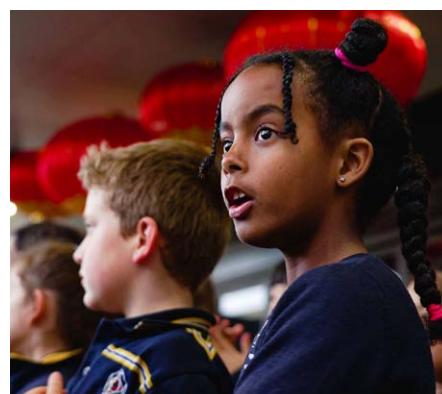
- Intensive English language support
- International Student Program manager and team
- Bilingual support officers
- International Student Representative Council (SRC)
- Student buddy system

CO-CURRICULAR SPORTS

- Australian Rules Football
- Touch football
- Soccer
- Badminton
- Tennis, table tennis
- Basketball
- Netball
- Volleyball, beach volleyball
- Aquatics

OTHER CO-CURRICULAR ACTIVITIES

- Festival of music choir (Years 5–6)
- Music – instrumental tuition, string orchestra, concert and rock bands
- Lunchtime activity programs



REYNELLA EAST COLLEGE

reynellaec.sa.edu.au

Reynella East College is a large, vibrant Pre-school to Year 12 school in the south of Adelaide. The college offers a variety of academic programs and courses that are specifically designed to meet the needs and interests of international students and staff are committed to providing international students with a supportive and enriching educational experience. The school has extensive gardened grounds, sporting and learning facilities, and provides an ideal environment for a focused, well-rounded preparation for life. Specialist teachers deliver lessons in health and physical education, performing arts and Japanese.

INTERNATIONAL PROGRAMS

- Primary School Graduate

SCHOOL FOCUS

- Academic achievement
- Digital learning
- Social development programs
- Literacy and numeracy development
- Instrumental music

FACILITIES

- Large sporting ovals
- Open planned learning spaces to promote collaboration, critical thinking and personalised learning
- Performing arts centre
- Instrumental music centre
- Sporting facilities - gymnasiums, sports ovals, tennis, basketball and netball courts
- Wayikuu centre - a brand new, international standard four-court gymnasium facility

LANGUAGES

- Japanese

SUPPORT SERVICES

- English language support
- International Student Program manager and team
- Parent participation – classroom reading, excursions, canteen
- Student buddy system
- Out of School Hours Care (OSHC) service

CO-CURRICULAR SPORTS

- Volleyball
- Basketball
- Soccer
- Netball
- Karate
- Judo
- Track and field
- Australian Rules Football
- Golf (club nearby)
- E-sports

LOCATION

Southern Adelaide

YEAR OF ESTABLISHMENT

2011

NUMBER OF STUDENTS

500 (Primary sub-school)

YEARS

Reception – 6
(primary sub-school)

OTHER CO-CURRICULAR ACTIVITIES

- Music – instrumental tuition, choir
- Japanese primary games day



RICHMOND PRIMARY SCHOOL

richmondps.sa.edu.au

Richmond Primary School is a proud South Australian government school providing quality education for children from Reception to Year 6. Located close to the city, the school is a vibrant learning community. Richmond Primary School is known for its excellent programs, cultural diversity, up to date facilities, beautiful grounds and friendly, engaged students. Richmond Primary School believes in a strong partnership between students, parents and staff. This is evident through the strong sense of enthusiasm, energy and excitement that exists in school community. The school's vision is to support the students to become active articulate citizens of the world and the school's mission is to provide rich learning experiences within a family-like atmosphere. "Learning and Caring for Life" serves as the school's motto. The values Richmond Primary School upholds are honesty, inclusivity, courage, and empathy.

LOCATION

Central Adelaide

YEAR OF ESTABLISHMENT

1898

NUMBER OF STUDENTS

360

YEARS

Reception – 6

INTERNATIONAL PROGRAMS

- Primary School
- Primary School Study Abroad
- Study Tours

SCHOOL FOCUS

- Academic excellence driven by data informed programming
- Numeracy and literacy
- Writing
- Excellence in music

FACILITIES

- Recent playground upgrade

SPECIAL INTEREST PROGRAMS

- Choir
- Instrumental music program for Years 5 & 6
- ICAS competition for Years 3-6 (science, English, maths)
- Australian Maths Competition
- Oliphant Science Awards
- Chess club

LANGUAGES

- Italian

SUPPORT SERVICES

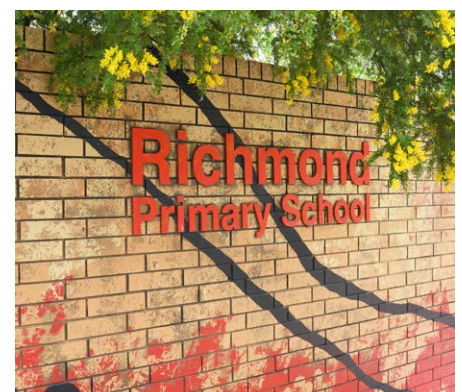
- English as an Additional Language (EAL) support
- Intervention and Stretch Programs

CO-CURRICULAR SPORTS

- School soccer

OTHER CO-CURRICULAR ACTIVITIES

- School of languages
- Coding camp during school holidays



ST LEONARDS PRIMARY SCHOOL

sleonrdsps.sa.edu.au

St Leonards Primary School is a fast-growing primary school of approximately 380 students located 11 kms from Adelaide and is close to the beach and excellent local facilities. St Leonards Primary School has a strong and proud history of success. The educators are committed to the educational and social development of all students, aiming for each child to reach their full potential. Rich opportunities are provided for our students to grow as individuals and to excel in a range of extra curricula activities including sports, performing arts, community activities and student voice. The years of fine academic tradition continue to be reflected in our achievements with consistently high grades in the national tests and competitions.

LOCATION

Western Adelaide

YEAR OF ESTABLISHMENT

1921

NUMBER OF STUDENTS

380

YEARS

Reception – 6

INTERNATIONAL PROGRAMS

- Primary School
- Primary School Study Abroad
- Study Tours

SCHOOL FOCUS

- Literacy and numeracy
- Information and communication technologies
- Science, Technology, Engineering and Mathematics (STEM)

FACILITIES

- School oval and astro-turf courts
- Art and activity room
- Language room
- Library
- Canteen
- Specialist STEM facilities
- Vegetable garden

LANGUAGES

- Chinese

SUPPORT SERVICES

- English language support
- International Student Program manager
- Student buddy system
- Out of school hours care service
- English as an Additional Language (EAL) coordinator and support teacher
- Pastoral care worker

CO-CURRICULAR SPORTS

- Soccer
- Netball
- T-ball

OTHER CO-CURRICULAR ACTIVITIES

- Junior and senior choir
- Instrumental music – keyboard, ukulele, piano, voice and guitar
- Children's University Adelaide - offers educational experiences for children outside of school
- Surf education program



STURT STREET COMMUNITY SCHOOL

sturtstcs.sa.edu.au

Sturt Street Community School, established in 1883, is located in the heart of Adelaide within a heritage building, near beautiful parklands, sports fields, and cultural attractions. The school blends its rich history with modern facilities and a contemporary curriculum, placing a strong emphasis on rigorous literacy and numeracy skill development. Known for academic excellence, it offers diverse specialist subjects including music, physical education, art, and an Intensive Primary English Course (IPEC). The school fosters a close-knit, family-like atmosphere through strong community ties and active parental engagement. Students are characterised as motivated, friendly, and deeply engaged learners. A central piazza and playground serves as a welcoming space, encouraging interactions across all age groups and enhancing the school's inclusive community environment.

LOCATION

Central Adelaide

YEAR OF ESTABLISHMENT

1883

NUMBER OF STUDENTS

196

YEARS

Reception – 6

INTERNATIONAL PROGRAMS

- Primary School
- Primary School Study Abroad
- Study Tours

SCHOOL FOCUS

- Visual and performing arts
- Instrumental music- woodwind, brass, choir, school concert band
- Science, Technology, Engineering, Arts, Mathematics (STEAM)
- Physical education

FACILITIES

- Walking access to CBD libraries, museums and major events
- Computer and technology facilities provided to enhance digital literacy skills
- Spacious library with a vast collection of books, e-books, and research materials
- Multi-purpose sports complex featuring a gymnasium and indoor courts
- Gardens and outdoor learning and play areas.
- Fully equipped home economics kitchen facilities for practical cooking skills development

LANGUAGES

- Greek

SUPPORT SERVICES

- English language support
- Intensive Primary English Course (IPEC)

OTHER CO-CURRICULAR ACTIVITIES

- School concert band
- Lego league
- School choir



THORNDON PARK PRIMARY SCHOOL

thornpkps.sa.edu.au

Thorndon Park Primary School is a small, metropolitan school located in the north-eastern suburbs of Adelaide, at the base of Black Hill Conservation Park. The school's priority is to provide students with the skills and knowledge to become well-balanced, resilient, and confident individuals who are active, effective community members and life-long learners. Students have the opportunity to achieve their personal best in academic pursuits as well as in a range of co-curricular activities.

LOCATION

Northeastern Adelaide

YEAR OF ESTABLISHMENT

1970

NUMBER OF STUDENTS

327

YEARS

Reception – 6

INTERNATIONAL PROGRAMS

- Primary School
- Primary School Study Abroad
- Study Tours

SCHOOL FOCUS

- Community, child, growth
- Global competencies
- Student wellbeing
- Academic achievement
- Evidence-based literacy and numeracy instruction
- The Arts – performing arts / visual Arts
- Physical education
- Technologies
- Inquiry learning

FACILITIES

- Wellbeing hub
- STEM centre
- Performing arts room
- Gym and outdoor basketball court
- Oval
- Nature play and forest
- Sensory garden
- Playgrounds

LANGUAGES

- Italian
- English as an Additional Language (EAL)

SUPPORT SERVICES

- Curriculum student Support officers
- Student wellbeing leader
- Pastoral care worker
- Bilingual student support officer
- Out of School Hours (OSHC)

CO-CURRICULAR SPORTS

- Soccer
- Aquatics
- Swimming
- Basketball
- Netball
- Cricket
- Football

OTHER CO-CURRICULAR ACTIVITIES

- Chess club
- Lego therapy
- Maths Olympiad
- Nature club
- Wakakirri Story Dance Festival
- International Competitions and Assessments for Schools (ICAS)



VALE PARK PRIMARY SCHOOL

valeparkps.sa.edu.au

Vale Park Primary School is located in the leafy suburb of Vale Park, nestled on the banks of the River Torrens and Linear Park which are part of the Walkerville Council area. The school is a short distance to the city, approximately 8km north east of the Adelaide CBD. Vale Park Primary School has a tradition of delivering high standards in education and providing a school environment where staff and parents work together to provide the optimum learning environment for students.

LOCATION

Northeastern Adelaide

YEAR OF ESTABLISHMENT

1964

NUMBER OF STUDENTS

415

YEARS

Reception – 6

INTERNATIONAL PROGRAMS

- Primary School
- Primary School Study Abroad
- Study Tours

SCHOOL FOCUS

- Physical education
- The Arts
- Stephanie Alexander Kitchen and Garden Program
- Science

FACILITIES

- Sporting facilities – gymnasium, playgrounds, ovals
- Herb and vegetable garden, orchard
- Nature play area

LANGUAGES

- Japanese
- English as an Additional Language (EAL)

SUPPORT SERVICES

- English language support
- International Student Program manager
- Student buddy system
- Parent participation – classroom support, social activities, sports
- Out of School Hours Care (OSHC) service

CO-CURRICULAR SPORTS

- Athletics
- Basketball
- Netball
- Cricket
- Soccer
- Swimming

OTHER CO-CURRICULAR ACTIVITIES

- Music – instrumental tuition, ensembles, choir
- Student action teams – student leadership program



WEST BEACH PRIMARY SCHOOL

wbeachps.sa.edu.au

West Beach Primary School is located in a western beachside suburb of Adelaide close to the airport and the River Torrens. The school has a distinct community spirit, attributable to its surroundings and relatively small size. As a beachside school, students are involved in many outdoor activities and belong to community surf lifesaving and many club sports teams. West Beach Primary School has spacious grounds which supports physical activity with a focus on literacy, numeracy and information and communication technologies.

LOCATION

Western Adelaide

YEAR OF ESTABLISHMENT

1969

NUMBER OF STUDENTS

321

YEARS

Reception – 6

INTERNATIONAL PROGRAMS

- Primary School
- Primary School Study Abroad

SCHOOL FOCUS

- Academic achievement
- Social and emotional development
- Community
- Values - respect, responsibility, creativity and excellence

FACILITIES

- Science, Technology, Engineering and Mathematics (STEM) area
- Outdoor heated swimming pool
- Music room
- Visual arts room
- Sports hall
- Extensive grounds
- Nature play area
- Community food garden and orchard

LANGUAGES

- Japanese
- English as an Additional Language (EAL)

SUPPORT SERVICES

- International Education Primary student program support
- Wellbeing leader
- Out of School Hours Care (OSHC)

CO-CURRICULAR SPORTS

- Netball
- School soccer

OTHER CO-CURRICULAR ACTIVITIES

- Japanese club
- Coding club
- Games club
- Art and craft







SOUTH AUSTRALIAN REGIONAL SCHOOLS

SOUTH AUSTRALIAN REGIONAL SCHOOLS

1	Birdwood High School	P 83
2	Eastern Fleurieu R-12 School	P 84
3	Gawler and District College B-12	P 85
4	Kangaroo Island Community Education	P 86
5	Kapunda High School	P 87
6	Mount Barker High School	P 88
7	Murray Bridge High School	P 89
8	Oakbank School	P 90
9	Renmark High School	P 91
10	Victor Harbor High School	P 92
11	Willunga High School	P 93



BIRDWOOD HIGH SCHOOL

birdwoodhs.sa.edu.au

Birdwood High School is situated in the northern Adelaide hills, just 43 km from the centre of Adelaide. Birdwood High School is recognised as a successful and innovative school offering students care and attention in a supportive community environment. The school offers a specialist Agriculture program and are fortunate to have a working farm that provides students with opportunities that they cannot get in other high schools. The area is also home to a growing number of boutique wineries and gourmet food producers which provide the school with valuable partnerships and work experience opportunities for students.

LOCATION

Eastern Adelaide

YEAR OF ESTABLISHMENT

1909

NUMBER OF STUDENTS

458

YEARS

7–12

INTERNATIONAL PROGRAMS

- High School Graduate
- Regional Study Abroad
- Study Tours

SCHOOL FOCUS

- Respect, resilience and empathy

FACILITIES

- Exhibition centre
- Vineyards
- Visual arts and media study spaces
- Technology centre

SPECIAL INTEREST PROGRAMS

- Specialist Australian Rules Football Academy (ARFA)
- Agriculture
- Café experience

LANGUAGES

- Japanese

SUPPORT SERVICES

- Wellbeing team
- Counsellors
- Student leadership

CO-CURRICULAR SPORTS

- Athletics
- Australian Rules Football
- Badminton
- Tennis
- Basketball
- Netball

OTHER CO-CURRICULAR ACTIVITIES

- Lunch time clubs (games club, breakfast club, Café experience, mindfulness yoga)
- School band



EASTERN FLEURIEU

R-12 SCHOOL

easternfleurieu.sa.edu.au

Eastern Fleurieu R-12 School is a unique multi-campus school with four primary campuses in Strathalbyn, Milang, Langhorne Creek and Ashbourne and one secondary campus in Strathalbyn. Strathalbyn is a 55 kilometre drive southeast of Adelaide through the foothills of the Mount Lofty Ranges and gateway to the beaches, wine regions, farming areas and national parks of the Fleurieu Peninsula, one of South Australia's premier tourist destinations.

LOCATION

Southeastern Adelaide

YEAR OF ESTABLISHMENT

1996

NUMBER OF STUDENTS

1407

YEARS

Reception–12

INTERNATIONAL PROGRAMS

- High School Graduate
- Regional Study Abroad
- Study Tours

SCHOOL FOCUS

- Personalisation and excellence in learning outcomes
- Student wellbeing and engagement
- Agricultural sciences
- Community-based programs
- Host school for trading organisation including Automotive servicing

FACILITIES

- Extensive facilities spanning five campuses
- Performing arts centre – instrumental music suites
- Hospitality centre – commercial and domestic kitchens
- Design and technical studies workshop – computer aided design, Science, Technology, Engineering and Mathematics (STEM) focus

- Agricultural studies facilities – animal husbandry, vineyards, orchards
- Sporting facilities – gymnasium, tennis courts, playing fields

SPECIAL INTEREST PROGRAMS

- Outdoor education – bushwalking, rock climbing, canoeing (Years 11–12)
- Performing arts – drama, dance and music (Years 7–12)
- Visual arts – art, design, multimedia, digital photography (Years 10–12)

SUPPORT SERVICES

- English language support
- International Student Program manager
- Wellbeing leaders

CO-CURRICULAR SPORTS

- Aquatics
- Athletics
- Australian Rules Football
- Soccer
- Basketball
- Netball
- Cricket
- Surfing
- Volleyball
- Orienteering

OTHER CO-CURRICULAR ACTIVITIES

- Drama group
- Music – big band, drumming, choir
- Agriculture club



GAWLER AND DISTRICT COLLEGE B-12

gdc.sa.edu.au

Gawler and District College B-12 has a commitment to the effective integration of school operations, and to the cohesion and continuity of curriculum across all of our sub-schools. Wellbeing, building a positive culture and providing high quality learning outcomes are major areas of focus for the whole school. The school has a strong community focus and offers a variety of extra-curricular programs to further engage students with their community.

LOCATION

Northeastern Adelaide

YEAR OF ESTABLISHMENT

1907

NUMBER OF STUDENTS

1283

YEARS

Reception–12

INTERNATIONAL PROGRAMS

- High School Graduate
- Regional Study Abroad
- Study Tours

SCHOOL FOCUS

- Academic excellence
- Student voice leadership
- Language
- Mathematics and science
- Arts - drama, music and visual
- Health and physical education
- Reading and literacy

FACILITIES

- Science, Technology, Engineering and Mathematics (STEM) building
- Pavilion with health and physical education facilities including a weights room
- Performing arts centre
- Technical studies centre
- Agricultural centre
- Large ovals and grassed areas

SPECIAL INTEREST PROGRAMS

- Agriculture
- Baseball

LANGUAGES

- Japanese

SUPPORT SERVICES

- Wellbeing team
- Breakfast club
- House program
- Defence school mentor program

CO-CURRICULAR SPORTS

- Athletics
- Australian Rules Football
- Soccer
- Rugby
- Tennis
- Baseball
- Basketball
- Netball
- Cricket
- Swimming
- Volleyball

OTHER CO-CURRICULAR ACTIVITIES

- Interact club
- Homework club



KANGAROO ISLAND COMMUNITY EDUCATION

kice.sa.edu.au

Kangaroo Island Community Education is a multi-campus school which reflects Kangaroo Island's strong island community and history. Kangaroo Island is one of the world's pristine natural environments and offers protection to huge populations of native Australian animals, as well as being a place where people can pursue their creative, environmental and adventure interests. The school provides students with opportunities to interact with scientists, artists and craftspeople across the island as well as participation in practical activities such as native fish surveys and tagging, pelican studies and dolphin monitoring.

INTERNATIONAL PROGRAMS

- High School Graduate
- Regional Study Abroad
- Study Tours

SCHOOL FOCUS

- Literacy and numeracy
- Reading improvement
- Sustainable and environmental education
- Science, Technology, Engineering and Mathematics (STEM)
- Expressive arts
- Mandarin language and culture

FACILITIES

- Aquaculture skills centre
- Hospitality centre
- Parndana campus campsite
- 10 hectare agriculture science facility
- Home economics and technical studies facilities
- Sporting facilities – recreation centre, ovals, sports courts, swimming pool
- Year 12 study area

SUPPORT SERVICES

- English language support
- International Student Program manager

LOCATION

Kangaroo Island

YEAR OF ESTABLISHMENT

1946

NUMBER OF STUDENTS

750

YEARS

Preschool–12

CO-CURRICULAR SPORTS

- Aquatics – swimming, sailing, snorkelling
- Athletics
- Australian Rules Football
- Basketball
- Netball
- Lawn bowls
- Cricket
- Softball
- Tennis

OTHER CO-CURRICULAR ACTIVITIES

- Music – band, jazz



KAPUNDA HIGH SCHOOL

kapundahs.sa.edu.au

Kapunda High School is geographically located 80 kms northeast of Adelaide between the beautiful Barossa and Clare Valleys. The town of Kapunda is Australia's oldest mining town attracting tourists, particularly those interested in history and heritage. Kapunda High School is one of the oldest high schools in rural South Australia and draws students from neighbouring regional towns. The school offers a wide range of curriculum and extra curricula activities to students delivered by dedicated staff who work closely with our parents and the wider community.

LOCATION

Northern Adelaide

YEAR OF ESTABLISHMENT

1917

NUMBER OF STUDENTS

650

YEARS

7–12

INTERNATIONAL PROGRAMS

- High School Graduate
- Regional Study Abroad
- Study Tours

SCHOOL FOCUS

- Academic excellence
- Agricultural studies
- Active school sports culture
- Community-based programs
- Career pathways program including VET and SACE
- Entrepreneurial specialist school programs
- Science and technology (STEM)
- University specialist programs in sciences & agriculture (Yr 11-12)
- Trade training centre

FACILITIES

- Agricultural learning spaces
- Design and technologies workshops – computer aided design, Science, Technology, Engineering and Mathematics (STEM) focus, including laser printers & 3D printers.
- Designated Year 7 building
- Flexible learning spaces
- Learning support hub
- Music's suites
- Sporting facilities – gymnasium, oval, sports courts

- Science laboratories
- Senior school study areas
- Trade training centre
- \$23.18 million dollar school rebuild and upgrade

SPECIAL INTEREST PROGRAMS

- Heritage trade studies*
- Agricultural studies, tractor driver training, cows create careers and KHS country fresh honey
- Entrepreneurial specialist school programs
- School house points initiative (Kidman, Hawke & Hughes)
- South Australian Aboriginal Secondary Training Academy (SAASTA)*
- STEM
- Trade training centre*
- Vocational Education and Training (VET) pathways (Years 10-12)*

* Selective entry program

LANGUAGES

- Japanese

SUPPORT SERVICES

- Breakfast club
- Course and career counselling
- English as an Additional Language (EAL)

- Learning support hub
- Onsite counsellors
- Pastoral care support
- Referrals available for individual students requiring professional one on one support from external sources
- Student review team – designing programs and individual support
- Wellbeing hub

CO-CURRICULAR SPORTS

- Australian Rules Football
- Basketball
- Cricket
- Netball
- Tennis

OTHER CO-CURRICULAR ACTIVITIES

- Australian business week
- Agricultural show team, cattle, sheep, goats, poultry & produce
- Biannual school musical
- Camps
- Excursions
- Music – voice and Instrumental tuition, bands, ensembles, musical performances
- Student leadership
- Various clubs and activities



MOUNT BARKER HIGH SCHOOL

mtbhs.sa.edu.au

Mount Barker High School is located in the beautiful Adelaide Hills, close to the tourist centre of Hahndorf and 25 kms from Adelaide. Mount Barker High School boasts strong community and industry alliances which provide additional opportunities for students in education and training. There is also a strong focus on 'Positive Education' which aims to provide students with skills and knowledge to increase resilience and wellbeing.

LOCATION

Southeastern Adelaide

YEAR OF ESTABLISHMENT

1908

NUMBER OF STUDENTS

1000

YEARS

7–12

INTERNATIONAL PROGRAMS

- High School Graduate
- Regional Study Abroad
- Study Tours

SCHOOL FOCUS

- Science, Technology, Engineering and Mathematics (STEM)
- VEX Robotics
- Outdoor education
- Physical education
- Agriculture

FACILITIES

- Specialist STEM facilities
- Performing arts centre
- Music, drama, art, home economics and technology suites
- Agricultural complex including farm
- Sporting facilities – gymnasium and ovals

SPECIAL INTEREST PROGRAMS

- Science, Technology, Engineering and Mathematics (STEM) (Years 9–10)
- Outdoor education (Years 9–12)
- Agriculture

LANGUAGES

- German
- Japanese

SUPPORT SERVICES

- English language support
- International Student Program manager and coordinator
- Student counsellors and wellbeing coaches
- A variety of excursions for international students

OTHER CO-CURRICULAR ACTIVITIES

- Music – voice and instrumental tuition, bands, ensembles, musical performances
- Drama performances
- Creative writing
- Subject competitions
- Chess club
- School sport competitions available throughout the year
- Musical instrument hire



MURRAY BRIDGE HIGH SCHOOL

murraybridgehs.sa.edu.au

Murray Bridge High School is located 78 kms east of the city of Adelaide on the beautiful Murray River. The large school offers a diverse curriculum to support all students to reach their academic potential and develop a strong future pathway. Murray Bridge High School is an Entrepreneurial Specialist School offering subjects where students engage in immersive learning experiences, using design thinking and solution fluency processes to solve their identified community and/or global problems. The school also offers a comprehensive specialist music program.

LOCATION

Southeastern Adelaide

YEAR OF ESTABLISHMENT

1913

NUMBER OF STUDENTS

1300

YEARS

7–12

INTERNATIONAL PROGRAMS

- High School Graduate
- Regional Study Abroad
- Study Tours

SCHOOL FOCUS

- Academic excellence
- Student voice - leadership
- Vocational education
- Entrepreneurial specialist school
- Music focus school
- Performing arts
- Science and technology
- Health and physical education

FACILITIES

- Agriculture facilities – farm, orchards, livestock and a bush tucker garden
- Trade training centre
- Modern home economics facilities including a cafeteria and commercial kitchen
- Music centre and drama workshop
- Modern tech studies workshop including 3D printing and laser cutting
- Sporting facilities – gymnasium, ovals, sports courts
- Dedicated and supported senior school study area

SPECIAL INTEREST PROGRAMS

- Outdoor education including bushwalking and camping (Year 10–12)
- Robotics
- Agriculture – animal husbandry, horticultural enterprises
- Entrepreneurial specialist subjects
- Music – instrumental tuition, band and ensembles
- Pedal prix

LANGUAGES

- German (Years 8–12)
- Chinese (Years 8–12)
- English as an Additional Language (EAL)

SUPPORT SERVICES

- English language support
- International student support manager
- Wellbeing support
- Pathways leaders

CO-CURRICULAR SPORTS

- Aquatics
- Athletics
- Australian Rules Football
- Soccer
- Basketball
- Netball
- Cricket
- Tennis
- Volleyball including beach volleyball
- Mountain biking
- Swimming

OTHER CO-CURRICULAR ACTIVITIES

- Chess club
- Dance and drama groups
- Lego club
- Robotics club
- Pedal prix
- Craft club
- Choir
- Soccer club
- Volleyball club



OAKBANK SCHOOL

oakbank.sa.edu.au

Oakbank School in South Australia's Adelaide Hills provides a comprehensive education from Reception to Year 12. The school emphasises a nurturing and diverse environment, focusing on personal development, academic success, and real-world skills. The curriculum includes a strong foundation in core subjects and offers flexible pathways, including vocational education (VET) and school-based apprenticeships. The school is especially known for its agricultural program, where students can gain hands-on experience in farming, viticulture, and related industries.

LOCATION

Eastern Adelaide

YEAR OF ESTABLISHMENT

1944

NUMBER OF STUDENTS

312

YEARS

Reception–12

INTERNATIONAL PROGRAMS

- High School Graduate
- Regional Study Abroad
- Study Tours

SCHOOL FOCUS

- Agriculture
- Digital technologies and ICT
- Food and Hospitality
- Science and technologies
- Vocational Education and Training (VET) and apprenticeship pathways
- University pathways
- Wellbeing programs and character development

FACILITIES

- Agriculture facilities including orchards, livestock and gardens
- Working farm
- Commercial free-range chicken enterprise
- High spec ICT and Cyber security facilities
- Yarning circle
- Gymnasium

- Material technologies including wood and metal work facilities
- Beach volleyball courts
- Dedicated Food and Hospitality and Textile facilities
- Modern classrooms

SPECIAL INTEREST PROGRAMS

- Agriculture
- Animal care

LANGUAGES

- Japanese (R-10)
- English as an Additional Language (EAL) support

SUPPORT SERVICES

- Diverse learning facilities and staffing support
- Sensory spaces and classroom
- Open Access learning
- Career counselling
- Wellbeing programs
- VET pathways
- Adelaide Hills Student Pathways group

CO-CURRICULAR SPORTS

- Soccer
- Basketball
- Australian Rules Football
- Netball

OTHER CO-CURRICULAR ACTIVITIES

- Agriculture show teams
- Ski trip
- Band club
- Boardgames clubs
- Various lunchtime programs



RENMARK HIGH SCHOOL

renmarkhs.sa.edu.au

Renmark High School is located in the beautiful Riverland of South Australia on the River Murray. The school boasts an eclectic and culturally diverse school community, which enhances their international student program and study options. Renmark High School has a strong tradition of academic and sporting success and is dedicated to supporting all students. The school believes that every student is unique and offers each student the opportunities for their success.

LOCATION

Northeastern Adelaide

YEAR OF ESTABLISHMENT

1925

NUMBER OF STUDENTS

471

YEARS

7–12

INTERNATIONAL PROGRAMS

- High School Study Abroad
- Study Tours

SCHOOL FOCUS

- Academic excellence
- Sporting excellence
- Farming and agricultural focus
- Offer a variety of programs that support the needs of all students

FACILITIES

- Farm management centre offering agriculture and horticulture facilities including the latest iFarm
- Visual arts and media studies studio
- Fully equipped tech facilities including 3D printing and laser printing

SPECIAL INTEREST PROGRAMS

- Outdoor education
- Entrepreneurship
- Languages program
- Instrumental music

LANGUAGES

- French
- Greek
- Spanish (Years 10–12)

SUPPORT SERVICES

- Student review team – designing programs and individual support
- Referrals available for individual students requiring professional one on one support from external sources

CO-CURRICULAR SPORTS

- Interstate volleyball
- Cross country
- 9-a-side football
- Surfing
- Canoeing

OTHER CO-CURRICULAR ACTIVITIES

- Work experience
- Debating
- Renmark High School band
- Language Perfect World Challenge
- Australian Business Week



VICTOR HARBOR HIGH SCHOOL

vhhs.sa.edu.au

Victor Harbor High School is located 80 kms south of Adelaide on the Fleurieu Peninsula. The township of Victor Harbor is a popular holiday destination with great sand and surf beaches, scenery and unique wildlife. Victor Harbor High School's curriculum maintains close links to the natural environment and is characterised by pathway planning and personalised learning for every student. Victor Harbor High School has a strong academic program and has strengths in Aquatics and Marine Studies along with specialist Arts and Sports programs including Volleyball and Australian Rules Football.

LOCATION

Southern Adelaide

YEAR OF ESTABLISHMENT

1937

NUMBER OF STUDENTS

720

YEARS

7–12

INTERNATIONAL PROGRAMS

- High School Graduate
- Regional Study Abroad

SCHOOL FOCUS

- Student mentoring
- Outdoor education
- Marine studies
- Music

FACILITIES

- Science and language laboratories
- Sporting facilities – gymnasium, oval, sports courts
- Doctors on campus
- Senior school complex

SPECIAL INTEREST PROGRAMS

- Music (Years 9–12)
- Outdoor education and aquatics - orienteering, bushwalking, rock climbing, mountain biking, snorkelling, camp (Years 10–12)
- Specialist sport AFL (Years 9–12)
- Volleyball (Years 9–12)
- Performing arts - music, drama production (Years 9–12)
- Marine studies (Year 12)
- Film & media (Years 9–11)
- Photography (Years 10–12)

LANGUAGES

- Indonesian
- Ngarrindjeri (Aboriginal) language (Years 9–12)

SUPPORT SERVICES

- English language support
- International Student Program manager and team
- Student buddy system

CO-CURRICULAR SPORTS

- Australian Rules Football
- Badminton
- Basketball
- Cricket
- Hockey
- Netball
- Sailing
- Softball
- Surfing
- Tennis and table tennis
- Volleyball

OTHER CO-CURRICULAR ACTIVITIES

- Music – concert band and rock band
- School musical
- Makerspaces (hands-on design and making, using physical and virtual tools and materials): Minecraft, claymation, board games, book talks, coding, colouring, drawing
- Work experience



WILLUNGA HIGH SCHOOL

whs.sa.edu.au

Willunga High School is located south of Adelaide on the beautiful Fleurieu Peninsula, close to the hills and sea. With beautiful and expansive natural grounds, it is situated in the famous wine-producing region of McLaren Vale. This provides students with unique opportunities such as agriculture, horticulture (including viticulture), wine making and hospitality. The school has its own working vineyard, olive grove and small farm, producing its own grapes, olives and high quality wine along with the raising of sheep, dairy and beef cattle. Willunga High School has a long tradition of working with the community, and excellent teaching and learning with a focus on a positive learning culture for all.

LOCATION

Southern Adelaide

YEAR OF ESTABLISHMENT

1960

NUMBER OF STUDENTS

700

YEARS

7–12

INTERNATIONAL PROGRAMS

- High School Graduate
- Regional Study Abroad
- Study Tours

SCHOOL FOCUS

- Netball
- High Intellectual Potential Pathway (HIPP)
- Inclusion
- Wellbeing
- Agriculture and horticulture

FACILITIES

- 17 hectares of land
- Agricultural land (vineyards, olive grove and horticultural use)
- Science, Technology, Engineering and Mathematics (STEM) facilities
- Sporting facilities – gymnasium, ovals, tennis courts
- Commercial grade kitchen classroom facilities

SPECIAL INTEREST PROGRAMS

- International Baccalaureate Middle Years Program
- Agriculture and horticulture
- Specialist netball
- High Intellectual Potential Pathway (HIPP)
- Dance
- Robotics
- Health and recreation

LANGUAGES

- Japanese
- Spanish

SUPPORT SERVICES

- English language support
- International Student Program manager
- Student buddy system
- Youth workers
- Mental health practitioner

CO-CURRICULAR SPORTS

- Surfing
- Netball

OTHER CO-CURRICULAR ACTIVITIES

- School musical
- Orchid club
- STEM club
- Rainbow alliance
- Chess club
- Art club



ADELAIDE METROPOLITAN SECONDARY SCHOOLS MATRIX

SCHOOL NAME	SPECIAL INTEREST PROGRAM	LANGUAGES	CO-CURRICULAR SPORTS	INTENSIVE SECONDARY ENGLISH COURSE
Aberfoyle Park High School	International Baccalaureate Diploma Programme, IGNITE, Music, Vocational Education and Training, (Years 10-12), Outdoor Education, Soccer, Pedal Prix	Spanish, Japanese	Athletics, Aquatics, Australian Rules Football, Soccer, Futsal, Basketball, Netball, Cricket, Volleyball, Beach Volleyball, Tennis, Badminton, Running Club	
Adelaide High School	Language Programs, Cricket Program, Rowing Program, Centre for Deaf & Hard of Hearing, STEAM	Vietnamese, Chinese, Japanese, French, German, Italian, Greek, Spanish, Auslan, English as an Additional Language	Athletics, Australian Rules Football, Soccer, Touch football, Badminton, Tennis, Table tennis, Basketball, Netball, Cricket, Hockey, Rowing, Softball, Swimming, Volleyball	Yes
Adelaide Secondary School of English		English as an Additional Language	Australian Rules Football, Soccer, Badminton, Basketball, Cricket	Yes
Australian Science and Mathematics School	Aviation Studies, Passion Project			
Banksia Park International High School	Soccer, Global Citizens Medal, Entrepreneurial Pathway Program	Japanese, Spanish, English as an Additional Language	Australian Rules Football, Soccer, Cricket, Badminton, Tennis, Table Tennis, Basketball, Netball, Rugby	Yes
Blackwood High School	Netball, Australian Rules Football, Music, Performing Arts	German, Japanese, English as an Additional Language	Athletics, Australian Rules Football, Soccer, Badminton, Tennis, Table tennis, Basketball, Netball, Golf, Dance, Orienteering, Softball, Volleyball	Yes
Brighton Secondary School	Music, Volleyball, Formula One (F1) in Schools Program, Think Bright Program (entrepreneurial skills), STEM	French, Japanese, English as an Additional Language	Volleyball, Australian Rules Football, Tennis, Basketball, Netball, Soccer, Volleyball	Yes
Charles Campbell College	Performing Arts Academy (dance, drama, music), Australian Rules Football Academy, Mathematics, Science, Formula One (F1) in Schools Program	Italian, English as an Additional Language	Australian Rules Football, Soccer, Netball, Rugby, Futsal, Volleyball, Badminton	Yes
Findon High School	Findon Technical College, Creative Industries Special Interest Pathway, South Australian Aboriginal Secondary Training Academy (SAASTA)	English as an Additional Language	Athletics, Aquatics, Basketball, Soccer, Australian Rules Football	
Glenunga International High School	International Baccalaureate Diploma Programme, IGNITE	Chinese, Japanese, French, English as an Additional Language	Athletics, Australian Rules Football, Soccer, Badminton, Table Tennis, Basketball, Netball, Cricket, Triathlon, Hockey, Orienteering, Swimming, Volleyball, Surfing, Mountain biking	Yes
Golden Grove High School	Dance, Touch Football, Australian Rules Football Women's	Japanese, Spanish, English as an Additional Language		
Hallett Cove School	Volleyball, Soccer, Marine Studies, Hair and Beauty, Food and Hospitality, Architecture, Advanced Manufacturing, Photography	Japanese, English as an Additional Language	Aquatics, Athletics, Rugby, Soccer, Baseball, softball, Basketball, Badminton, Tennis, Cricket, Gymnastics, Hockey	
Hamilton Secondary College	Music, Space Academy	Japanese, English as an Additional Language	Basketball, Outdoor Soccer, Futsal, Volleyball, Badminton, Netball, Athletics, Aquatics, Australian Rules Football, Cricket, Touch Rugby	Yes
Heathfield High School	Volleyball, Entrepreneurial Specialist Learning Pathway, Advance Technologies	French, Japanese	Athletics, Aquatics, Australian Rules Football, Soccer, Touch Football, Badminton, Tennis, Table Tennis, Basketball, Netball, Bushwalking, Cricket, Cycling, Rock Climbing, Softball, Volleyball	
Henley High School	Sports Academy, Performing Arts, STEM, Advanced Engineering	Japanese, English as an Additional Language	Athletics, Basketball, Cricket, Dance, Australian Rules Football, Hockey, Netball, Soccer, Surf Life Saving, Swimming, Tennis	Yes
Marryatville High School	Music, Tennis	Japanese, French, English as an Additional Language	Aquatics, Athletics, Australian Rules Football, Soccer, Touch Football, Badminton, Tennis, Basketball, Netball, Cricket, Mountain Biking, Hockey, Orienteering, Volleyball	Yes
Mitcham Girls High School	Specialised dance, School Pathways Programs - Electrotechnology, Health Services Assistance, STEM Pathways	Italian, French, English as an Additional Language	Swimming, Badminton, Basketball, Netball, Soccer, Athletics, Volleyball	Yes

SCHOOL NAME	SPECIAL INTEREST PROGRAM	LANGUAGES	CO-CURRICULAR SPORTS	INTENSIVE SECONDARY ENGLISH COURSE
Modbury High School	Music, Basketball, Pedal Prix, Formula One (F1) in Schools Program	Japanese, Spanish, English as an Additional Language	Australian Rules Football, Soccer, Touch football, Badminton, Tennis, Table tennis, Baseball, Softball, Basketball, Netball, Cricket, Volleyball	
Norwood International High School	International Baccalaureate Middle Years, International Baccalaureate Diploma Programme, Rowing, Italian Immersion, Pedal Prix, Accelerated STEM, Outdoor and Environmental Education	Greek, German, Italian, Chinese, Japanese, English as an Additional Language	Athletics, Australian Rules Football, Soccer, Badminton, Tennis, Basketball, Netball, Cricket, Rowing, Volleyball	Yes
Para Hills High School	Robotics, 3D printing, Virtual Reality, Cybersecurity and Artificial Intelligence, Para Hills Performing Arts Company	Japanese, English as an Additional Language	Regional, State and International Sporting Competitions, Athletics	
Parafield Gardens High School	Specialist soccer, Dance	German, Japanese	Volleyball, Australian Rules Football, Netball, Badminton	Yes
Paralowie R-12 School	Volleyball, Vocational Education and Training, Stage 2 Chemistry and Physics at the University of South Australia	First Language Maintenance Development - Arabic, Dari, Vietnamese (R-6), English as an Additional Language (Years 10-12)	Volleyball, Cricket	
Plympton International College	Specialist Health and Medical Science/ Research Program, Specialist Chinese Bilingual Program, STEM, Surf Camp	Chinese-Bilingual program (Mandarin), Chinese for Background Speakers, Hindi for Background Speakers, English as an Additional Language	Australian Rules Football, Touch football, Soccer, Badminton, Tennis, Table Tennis, Basketball, Netball, Volleyball, Beach Volleyball, Surfing, Aquatics	
Reynella East College	Sports Academy, Arts Academy, Innovators Academy	Japanese, German, French, English as an Additional Language	Volleyball, Basketball, Soccer, Netball, Karate, Judo, Track and Field, Australian Rules Football, Golf, E-Sports	Yes
Roma Mitchell Secondary College	International Baccalaureate Middle Years, International Baccalaureate Diploma Programme, Sports academy, Sports Academy - Soccer, Australian Rules Football, Australian Rules Football Women's	Japanese, German, Italian, Hindi	Australian Rules Football, Badminton, Basketball, Cricket, Netball, Soccer, Basketball, Volleyball	
Salisbury East High School	Elite Physical Education Program, Music, STEM, Specialised Soccer	Japanese, English as an Additional Language		
Seaford Secondary College	STEM, Aquatics, Volleyball, Soccer, Performing Arts	Japanese, Spanish, English as an Additional Language	Aquatics, Volleyball, Soccer, Australian Rules Football, Badminton, Basketball, Netball, Cricket	
Seaton High School	Entrepreneurial Specialist Program including Visual Art and Innovation, Emerging Technologies and Students with High Intellectual Potential (SHIP) Strands, Diamond Sports - Baseball, Softball	Japanese	Australian Rules Football, Baseball, Basketball, Soccer, Softball	
Thebarton Senior College	Twilight SACE classes, Pathways into Vocational Education and Training Programs, Engineering and Construction Program	English as an Additional Language	Badminton, Basketball, Volleyball, Weight Training, Futsal	
Underdale High School	International Football (Soccer) Academy, Surf Excursions	Greek, Japanese, English as an Additional Language	Athletics, Australian Rules Football, Soccer, Futsal, Rugby, Badminton, Netball, Cricket, Volleyball, Tennis, Table Tennis, Basketball, Ice Hockey	Yes
Unley High School	French Bilingual/Binational Program, Rowing, Outdoor Education, Design and Architecture, Food and Hospitality, Fashion Design	French, Greek, Italian, Chinese, English as an Additional Language	Athletics, Aquatics, Australian Rules Football, Soccer, Rugby, Touch Football, Badminton, Tennis, Table Tennis, Baseball, Softball, Basketball, Netball, Cricket, Cycling, Rowing, Surfing, Volleyball	Yes
Valley View Secondary School	Outdoor Education, Advanced Cyber Security Program in Conjunction with Adelaide Institute of Business and Technology, Italian Outdoor Program, Sister School in Italy	Italian, Punjabi	Boxing, Fitness, European Handball, Hockey, Netball, Basketball, Australian Football, Soccer, Cricket	
Wirreanda Secondary School	Specialist Sports, Music Tuition	Auslan, Aboriginal Contexts, English as an Additional Language		
Woodville High School	ASTRA Program, Basketball Academy, Football Academy, Food and Hospitality, Music	Indonesian, Vietnamese, English as an Additional Language	Australian Rules Football, Badminton, Basketball, Bush Walking, Fitness Centre, Soccer, Kayaking, Rugby Swimming, Tennis	Yes

ADELAIDE METROPOLITAN PRIMARY SCHOOLS MATRIX

SCHOOL NAME	SPECIAL INTEREST PROGRAM	LANGUAGES	CO-CURRICULAR SPORTS	INTENSIVE PRIMARY ENGLISH COURSE
Bellevue Heights Primary School	STEM	French	Cricket, Netball, Soccer, Basketball, Athletics, Swimming, Cross Country Running	
Blackwood Primary School	International Baccalaureate Primary Years Programme	Japanese, English as an Additional Language	Basketball, Soccer, Netball, Cricket	
Charles Campbell College		Italian	Basketball, Netball	
Clapham Primary School	STEM	Japanese, English as an Additional Language	Athletics, Aquatics, Cricket, Netball, Soccer, Swimming	
Clovelly Park Primary School		Indonesian	Sporting Competitions	
Coromandel Valley Primary School	International Baccalaureate Primary Years Programme	Japanese	Australian Rules Football, Soccer, Cricket, Netball, Basketball	
East Torrens Primary School	PE/Health, Italian, Science/STEM, Music	Italian, First Language Maintenance for Hindi/Punjabi	Water Safety, Aquatics, Basketball, Soccer, Rugby, Bike Education	
Forbes Primary School	Specialist Physical Education, Science and Performing Art programs, Breakfast Club, Onsite Grow Wellbeing Program, Sport Programs, Choir, InitiaLit/MultiLit, After School Sports	Indonesian, English as an Additional Language	Specialist Physical Education	
Hallett Cove School		Japanese, English as an Additional Language	Athletics, Aquatics, Australian Rules Football, Touch Football, Cricket, Netball, Swimming, Surfing	
Highgate School	International Baccalaureate Primary Years Programme	French, Chinese Mandarin	Cricket, Softball/Tee-ball, Australian Rules Football, Soccer, Hockey/Minkey, Basketball, Volleyball, Netball	
Kilkenny Primary School		Indonesian	Cricket, Netball, Volleyball, Basketball, Football, Athletics, Soccer	
Lockleys Primary School		Italian	Athletics, Aquatics, Swimming	
Paradise Primary School	STEM	Auslan	Basketball, Karate, Judo	Yes
Paralowie R-12 School		Kaurna Language	Volleyball	
Plympton International College	STEM, Specialist Chinese Bilingual Program	Chinese Mandarin, English as an Additional Language	Australian Rules Football, Touch Football, Soccer, Badminton, Tennis, Table Tennis, Basketball, Netball, Volleyball, Beach Volleyball, Aquatics	
Reynella East College		Japanese	Volleyball, Basketball, Soccer, Netball, Karate, Judo, Track and Field, Australian Rules Football, Golf, E-Sports	
Richmond Primary School		Italian, English as an Additional Language	Soccer	
St Leonards Primary School	STEM	Chinese, English as an Additional Language	Soccer, Netball, T-ball	
Sturt Street Community School	STEAM	Greek		Yes
Thorndon Park Primary School		Italian, English as an Additional Language	Soccer, Aquatics, Swimming, Basketball, Netball, Cricket, Football	
Vale Park Primary School		Japanese, English as an Additional Language	Athletics, Basketball, Netball, Cricket, Soccer, Swimming	
West Beach Primary School		Japanese, English as an Additional Language	Netball, Soccer	

SOUTH AUSTRALIAN REGIONAL SCHOOLS MATRIX

SCHOOL NAME	SPECIAL INTEREST PROGRAM	LANGUAGES	CO-CURRICULAR SPORTS
Birdwood High School	Specialist Australian Rules, Football Academy, Agriculture, Café experience	Japanese	Athletics, Australian Rules Football, Badminton, Tennis, Basketball, Netball
Eastern Fleurieu R-12 School	Outdoor Education, Performing Arts, Visual Arts		Aquatics, Athletics, Australian Rules Football, Soccer, Basketball, Netball, Cricket, Surfing, Volleyball, Orienteering
Gawler and District College B-12	Agriculture, Baseball	Japanese	Athletics, Australian Rules Football, Soccer, Rugby, Tennis, Baseball, Basketball, Netball, Cricket, Swimming, Volleyball
Kangaroo Island Community Education	STEM		Aquatics, Athletics, Australian Rules Football, Basketball, Netball, Lawn bowls, Cricket, Softball, Tennis
Kapunda High School	Heritage Trade Studies, Agricultural studies, Entrepreneurial Specialist School Programs, STEM, Trade Training Centre, Vocational Education and Training Pathways	Japanese	Australian Rules Football, Basketball, Cricket, Netball, Tennis
Mount Barker High School	STEM, Outdoor Education, Agriculture	German, Japanese	School Sport Competitions
Murray Bridge High School	Outdoor Education, Robotics, Agriculture, Entrepreneurial Specialist subjects, Music, Pedal Prix	German, Chinese, English as an Additional Language	Aquatics, Athletics, Australian Rules Football, Soccer, Basketball, Netball, Cricket, Tennis, Volleyball, Mountain biking, Swimming
Oakbank Area School	Agriculture, Animal Care	Japanese, English as an Additional Language	Soccer, Basketball, Australian Rules Football, Netball
Renmark High School	Outdoor Education, Entrepreneurship, Languages Program, Instrumental Music	French, Greek, Spanish	Interstate Volleyball, Cross Country, 9 a-side football, Surfing, Canoeing
Victor Harbor High School	Music, Outdoor Education and Aquatics, Australian Rules Football, Volleyball, Performing Arts, Marine Studies, Film & Media, Photography	Indonesian, Ngarrindjeri	Australian Rules Football, Badminton, Basketball, Cricket, Hockey, Netball, Sailing, Softball, Surfing, Tennis and Table Tennis, Volleyball
Willunga High School	International Baccalaureate Middle Years Program, Agriculture and Horticulture, Specialist Netball, High Intellectual Potential Pathway (HIPP), Dance, Robotics, Health and Recreation	Japanese, Spanish	Surfing, Netball



Bunyerroo Gorge, Flinders Ranges & Outback; Adam Edwards



Department for Education T/A South Australian Government Schools
CRICOS Provider Number: 00018A. ©2024, Department for Education.

Disclaimer: The information contained in this publication is correct at the time of printing but may be subject to change without notice. The Department for Education assumes no responsibility for the accuracy of the information provided by third parties.

**South Australian Government Schools
International Education Services
Department for Education**

**T +61 8 8226 3402 E education.isp@sa.gov.au
www.internationalstudents.sa.edu.au**

***South Australian
Government Schools***



Government of South Australia
Department for Education

