

Explore. Study. Live.

**Tasmanian Government Schools
International Student Program**





Explore, study and live in Tasmania

If you're ready to embark on a once-in-a-lifetime journey to explore, study and live in Tasmania, you're in the right place.

Tasmania is a study destination where quality education, modern facilities, vibrant cities, diverse culture and art scene, and an island lifestyle combine to open doors to lifelong opportunities.

Our cities are fun and beautiful, yet they are among the safest in the world. We are never far from the wilderness and its native animals, the land and sea, clean air and clean water.

In Tasmania, you can hear yourself think yet you won't feel alone. We want to know your story and be part of it.

Embrace the diversity in Tasmania and make it your strength.

Contents

Explore.	
Study in Tasmania	4
Study.	
Tasmania's education system	6
International Student Program	8 – 14
• Primary School (Prep – Year 6)	8
• Junior High School (Year 7 – 10)	9
• Senior High School (Year 11 – 12)	10
• Study Abroad Program (High School)	12
• Study Tour Program (High School)	13
• English Language and Preparation Program	14
Meet our students	15
Live.	
Lifestyle	16
Student accommodation	18
Student support and other services	20
International Program.	
How to apply	21
Entry requirements	22
Fees	23
Term dates	24
Campus guide	26

Acknowledgement of Country

We acknowledge the Tasmanian Aboriginal Community as the traditional and continuing custodians of Lutruwita, where Palawa have cared for their children and prepared them for life since the beginning of time.

Together we live, work, play and learn on what always was, and always will be, Aboriginal land.

We honour Elders, past and present, and pay our respects to all Aboriginal and Torres Strait Islander colleagues, families and friends.

Study in Tasmania



Tasmanian Government Schools have been welcoming international students from all over the world since the 1980s.

With **over 120 primary schools and 18 high schools** (junior and senior high schools) accredited to deliver our bespoke International Student Program, we are committed to ensuring a rich and rewarding learning experience.

When learning in Tasmania, students will be encouraged to become **active lifelong learners**. Not only will they learn a wealth of subject knowledge, they will also learn how to learn – the skills of research and investigation, questioning and analysis.

In Tasmania, students are supported at every stage of their learning journey.

The Department for Education, Children and Young People is committed to be an exemplary **child safe organisation** that puts children and young people at the centre of all actions we take and decisions we make.

Our support ensures international students are **Known, Safe, Well and Learning** every day.

“*The natural beauty of Tasmania is stunning – the lush landscapes, clear skies, and fresh air makes it the perfect setting for learning and exploring.*”

Sesandi, Y11, Rosny College ”

Tasmania

the perfect study destination

Safe and welcoming place to live.



One of the best things about living in Tasmania is the strong sense of community and safety.

International students inevitably comment about the friendliness of Tasmanians and the warm welcome they receive.

Authentic English-speaking environment.



More than 97% of enrolments in Tasmanian Government Schools are local students.

This makes Tasmania a perfect place for international students to develop their English skills and enjoy an authentic Australian experience.

Affordable living and tuition costs.



Affordable homestay and tuition fees compared to other Australian schools.

Pristine environment and vibrant community.



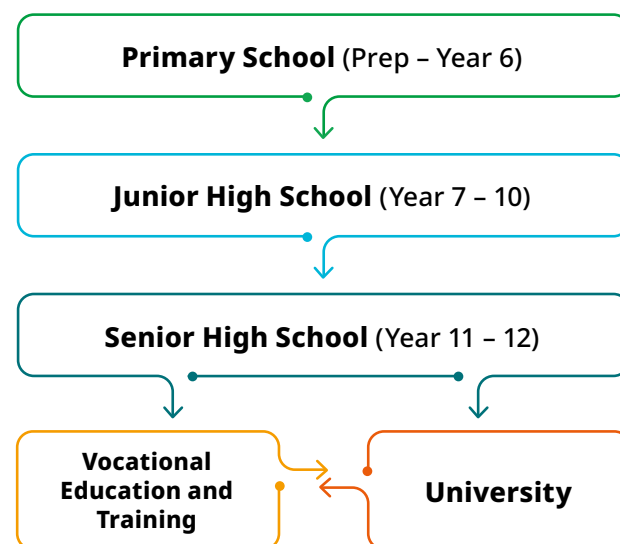
Our island state offers a chance to be part of a growing, thriving community with a vibrant cultural and arts scene – in one of the most spectacular natural environments in the world.

Tasmania's education system

The Tasmanian Government offers schooling for international students from Prep through to Year 12.

- **Primary Schools (Prep – Year 6)** where students begin their education
- **Junior High Schools (Year 7 – 10)** the next step in their academic journey
- **Senior High Schools (Year 11 – 12)** for students completing Year 11 and 12

Afterwards, students can pursue further studies, including university or vocational education and training (VET).



Curriculum and education journey

Tasmanian Government Schools follow the Australian Curriculum, emphasising academic excellence and exceptional results. The curriculum aims to prepare young learners for a globalised world, equipping them to shape their own futures.

Students will develop essential skills and capabilities:

- Critical and Creative Thinking

- Digital Literacy
- Ethical Understanding
- Intercultural Understanding
- Literacy
- Numeracy
- Personal and Social Capability

Senior High School students focus on deepening their knowledge and honing advanced skills through completing their Tasmanian Certificate of Education (TCE).

Tasmanian Certificate of Education (TCE)

The TCE is the Tasmanian senior secondary certificate requiring the highest level of educational achievement.

The TCE is recognised by universities and employers throughout Australia. Students must complete two years of study at Senior High School and meet all the TCE standards to achieve this qualification.

Students need to achieve the TCE to receive an ATAR for university entrance.

Australian Tertiary Admission Rank (ATAR)

In Australia, all universities allocate places to students based on their Year 11 and 12 school results. The student's Australian Tertiary Admission Rank (ATAR) is derived from their TCE results.

In Senior High School (Year 11 – 12), students can select subjects that align with their aspirations and interests. With assistance and guidance from teachers, students will develop a personalised study program aimed at achieving an ATAR and gaining access to an Australian university.

For more information on TCE and ATAR, visit www.tasc.tas.gov.au

Tasmanian Government Schools

Quality and academic excellence

Tasmanian Government Schools all deliver the Australian curriculum. The quality of the education speaks for itself with 93 per cent of Tasmanian students who apply for university receiving an offer, which is a higher percentage than any other state or territory in Australia.*

Personalised support for students

Every school employs a dedicated International Student Advisor (ISA) to provide learning and personal support to international students.

Our team provides support 24/7, including after-hours emergency support to ensure students are always able to access help and support when they need it.

Wide range of extracurricular activities

Our schools offer free specialty enrichment programs to cater to students' passions and talents.

These programs include music, team sports, mountain biking, surfing and kayaking. Students are encouraged to participate in enrichment activities to promote a healthy study/life balance, practice their English outside of the classroom, and make new friends.

Specialised Senior High Schools

Specialised Senior High Schools (Year 11 and 12) provide a focused preparation for future study at university, access to specialised facilities and more than 100 exciting subject choices.

Government managed homestay program

Operated by the Tasmanian Government, our homestay program offers safe, secure and welcoming accommodation for students from Year 9 – 12 to experience an authentic Australian family and community life.

*Data sourced from Australian Government Department of Education, Skills and Employment report for Undergraduate applications, offers and acceptances 2021.



International Student Program

Primary School

Prep – Year 6

Tasmanian Government primary schools provide an **enriching learning environment** with a strong emphasis on basic skills in literacy, numeracy and IT.

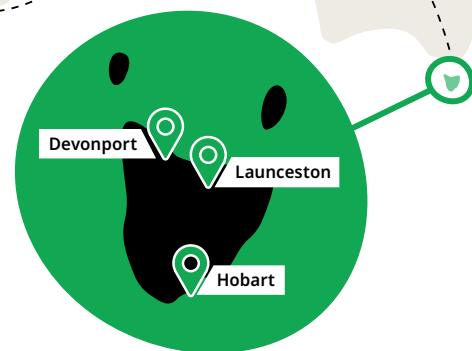
Teachers work closely with children and their families to **develop students' sense of self-worth and the values they need for life in a global society.**

Learning at primary school

Our primary school programs are designed to prepare young learners for a strong start

to learning – not just academic learning, but also critical thinking and personal and social capabilities.

- Special English lessons for non-English speaking students
- Academic support on campus by teachers
- Hands-on and interactive learning across all learning areas of the Australian Curriculum
- Enjoy many different outdoor activities coordinated by schools all year round
- Full integration and friendship with local students



Junior High School

Year 7 – 10

Tasmanian Junior High Schools (known as High Schools) have a focus on teaching the fundamental core subjects and offer a variety of elective subjects and enrichment activities.

Junior High Schools follow the **traditional school model** and students are required to wear school uniform and address teachers formally.

Junior High School class sizes are typically **20 – 25 students**, allowing teachers to focus on the needs of individual students.

Learning at Junior High School

Students will study a range of subjects across various learning areas, including:

- English
- Health and Physical Education (HPE)
- Humanities and Social Sciences (HASS)
- Languages
- Mathematics

- Science
- Technologies
- The Arts

In Year 7 and 8, students will study a range of compulsory subjects, including core subjects Mathematics, Science, English, and Humanities, as well as recreational subjects such as Physical Education, Art, Computing, and Design and Technology.

In Year 9 and 10, students will continue to study compulsory core subjects – Mathematics, Science, English, and Humanities – and in addition select other subjects they would like to study.

For example, a student that has a strong interest in Science and Computing may elect to study Computing and Extended Science.

Assessment

Junior High Schools do not require students to sit formal examinations. Students will undertake assessment activities throughout the school year, including assignments, projects, and tests.



Senior High School

Year 11 – 12

Tasmanian Senior High Schools (known as Colleges) allow students to choose courses from a diverse range of learning areas with specialised facilities, alongside extracurricular activities such as special interest courses, sports, and excursions.

To prepare students for **life beyond school**, students are not required to wear uniforms, they address teachers by their first names, and are responsible for their own attendance at school.

Students are encouraged to ask **questions**, **give their opinions** and to participate in activities.



Learning at Senior High School

In Year 11 and 12, students are supported to plan for their personal program of learning based on interests, abilities, learning goals, and career aspirations.

International students are required to study English, alongside other learning areas they choose to focus on. There is a range of subjects on offer, academic focused subjects including Mathematics, Science, History and Technology, and recreational subjects such as Photography, Drama, and Outdoor Education.

Sample timetable

Time	Monday	Tuesday	Wednesday	Thursday	Friday
8:30am – 8:45am	Home Group	Home Group	Home Group	Home Group	Home Group
8.45am – 10:10am	EAL 3	Outdoor Education 2	Biology 3	Maths Methods 3	Physics 3
10:10am – 10:30am	Morning tea	Morning tea	Morning tea	Morning tea	Morning tea
10:30am – 12:00pm	EAL 3	Outdoor Education 2	EAL 3	Maths Methods 3	Physics 3
12:00pm – 1:00pm	Lunch/tutorials	Lunch/tutorials	Lunch/tutorials	Lunch/tutorials	Lunch/tutorials
1:00 – 2:25pm	Biology 3	Maths Methods 3	Physics 3	Outdoor Education 2	Biology 3
2:30pm – 4:00pm		English Foundation 2		English Foundation 2	

If you would like advice on choosing your school, please contact [Tasmanian Government Education International](#).

Assessment

Assessment in Senior High Schools will depend on subjects the student has elected to study.

For most subjects, assessment will include assignments, projects and tests throughout the school year, and in addition two examination periods per year.

Generally, around 70% of a student’s final marks are generated internally (from assignments etc) and 30% are generated from formal exams.

Future study pathways

The vast majority of today’s jobs require a Tasmanian Certificate of Education (TCE) or higher qualification, and employers are looking for people who are flexible, adaptable and willing to learn.

With assistance and guidance from teachers, international students will develop a personalised study program aimed at achieving the Tasmanian Certificate of Education (TCE) to calculate a rank order of students known as the Australian Tertiary Admission Rank (ATAR).

Examples of possible careers based on subjects

Subjects	<ul style="list-style-type: none">Accounting /Business Studies / Economics / Legal StudiesEnglish as an Additional LanguageChemistry / PhysicsMathematicsSociology / History	<ul style="list-style-type: none">BiologyChemistryEnglish as an Additional LanguageMathematicsPhysical SciencesPhysics	<ul style="list-style-type: none">Digital TechnologiesEnglish as an Additional LanguageEngineering DesignComputer ScienceComputer Graphics and Design
Career	<ul style="list-style-type: none">AccountingBusinessBanking and FinanceInternational RelationsLaw	<ul style="list-style-type: none">Health and Medical SciencesMedicineNutrition and DieteticsPhysiotherapy	<ul style="list-style-type: none">Aeronautical EngineeringArchitectureEngineeringInformation Technology

Study Abroad Program

High School

Tasmanian Government Schools offer a Study Abroad program to international students who are looking for an education adventure to follow their **personal, cultural, and academic goals**.

Students may apply to study at any high school across Tasmania for a minimum of **three months (one term) to one year (four terms)**. Students live with a family in homestay and experience the unique island lifestyle in Tasmania.

“ I think my English improved a lot with the help of the school and my host family, it was an incredible experience.

- Student Leaver Survey, July 2024

”



Program highlights

Our Study Abroad program allows students to have an immersive experience of high school study in Tasmania.

- Study at world-class high schools with support from caring teachers
- Flexible choice of over 100 subjects
- Immersive English language learning environment with personalised English support
- Stunning natural environment and vibrant communities
- Wide range of extra-curricular activities, sports and academics
- Make lifelong friendships with peers at school and within homestay families
- Learn to become an active global citizen

Student Leaver Survey, July 2024*



95%

of respondents said their school was **supportive**



93%

of respondents said they **enjoyed** staying with their host and thought host was **supportive**



91%

of respondents said their **English has improved**



95%

of respondents said they feel more **confident and independent** because of this learning experience

*Tasmanian Government Schools International Student Leaver Survey – July 2024

Study Tour Program

High School

Our Study Tour program welcomes groups of students from around the world. This experience offers students an opportunity to study in a high school to enrich their global competencies and **develop English language skills**.

The flexibility in program development allows us to **customise the best immersive experience** for learning Australian culture and developing long-lasting friendships with local students.

An **English-speaking chaperone** is required to accompany each study tour group at each host school to assist with supervision and student support.

Program highlights

Immersive education experience

Students will attend classes alongside local students and experience a range of different subjects. The immersive school experience provides an opportunity for students to learn about Australian culture and develop their English language skills.

Authentic Australian experience with a homestay family

The Tasmanian Government managed homestay program is available to students wishing to participate in study tour programs.

This authentic living experience enlists welcoming and supportive local families to provide care and assistance to international students.

Support from school coordinator

A dedicated school coordinator is provided to help manage and plan students' study experience.

The coordinator will support students to make the most of their time in school.

Return airport transfer

Transport to and from the airport is included in the cost of all study tour programs.

Fully customised program

Various optional additions are available to customise a study tour program for students.

Enquires for customised study tour programs please contact info@study.tas.gov.au



English Language and Preparation Program

English language support

Tasmanian Government Schools welcome students from different cultural and linguistic backgrounds. We support students with English learning to be resilient, creative and curious thinkers.

Personalised English support is a needs-based service depending on a student's English skill level. English tuition will be delivered alongside mainstream subjects at school, such as Mathematics, Science and History and Art.

This means that students will attend classes with local Tasmanian classmates, which is a great way to practice English.

Academic preparation program (High School)

To help international students succeed in their studies at Senior High Schools and adjust to life in Tasmania, we may recommend students to undertake an academic preparation program as part of their study either at a Junior High School (Year 10) or a Senior High School (Year 11) depending on age.



The program provides students with an immersive learning experience prior to starting their Year 11 studies. It aims to improve English language skills, ease the transition into the academic setting, and enhance connections with peers and local friends.

The duration of the program is normally one or two terms, depending on when students start the school year in Year 11.

English as an Additional Language or Dialect (EAL/D)

English as an Additional Language or Dialect (EAL/D) is a language subject designed for students from non-English speaking backgrounds. Students can choose to study this as one of their subjects.



Meet our students



Veronica – Italy

Year 12
Launceston College

“

I studied at Launceston College for a year, and Launceston immediately captured my heart with its warm and welcoming community. The teachers were not only there to guide us but also encouraged independent learning. This experience helped me grow, becoming more mature and self-aware.

I was fortunate to participate in a 10-day sailing on the Windeward Bound, where I sailed with people from all around Australia and the world. It was also an excellent opportunity to enhance my English language skills.

”



Liam – Vietnam

Year 12
Rosny College

“

I'm passionate about biology, and Tasmania's biodiversity offers valuable opportunities for learning. I love the natural beauty of Tasmania.

From my first day, my homestay made me feel welcome as part of their family and community, this helped me to adapt to my new home and environment.

Getting involved in local life and stepping out of my comfort zone has helped me to become more mature. I've set goals to accomplish on this academic journey, as I create unforgettable memories in Tasmania.

”



Parada – Thailand

Year 12,
Hobart College

“

My biggest dream since I was eight years old was to study overseas.

I've had to adjust to life away from my home, a new language and making new friends.

I knew this would be challenging, but the support I received from my school has made this easier. I want to let everyone know that you won't feel alone, Tasmania is a place where you will find friends, support and amazing experiences!

Studying in Tasmania is my dream come true.

”



Shashanth – India

Year 12,
Elizabeth College

“

I grew up in Singapore and am now studying at Elizabeth College. The beauty, opportunities, cultural diversity, and strong sense of community first attracted me to Tasmania.

I value the college's emphasis on holistic development, cultural exposure, and diversity, as well as its balance between academics and fun.

I would like to highlight the importance of adapting to change with the support of a welcoming and friendly homestay family.

”



Lifestyle



Tasmania is a destination blessed with an abundance of unique and breathtaking experiences.

International students can explore Tasmania in many ways with friends and families.

“Live the Tassie lifestyle, and enjoy a real cultural experience!”

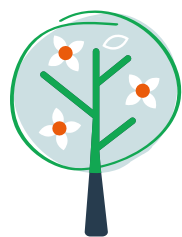
Top eight experiences to start you off!

1. Indulge in the world's best seafood
2. Climb the spectacular scenic slopes of Cradle Mountain
3. Get up close with a Tasmanian devil at Bonorong Wildlife Sanctuary
4. Browse locally made goods at Hobart's historic Salamanca Market
5. Navigate the world's best mountain bike trails at Blue Derby
6. Discover MONA, where old and new art converge
7. Capture the magic of Wineglass Bay
8. Paddle down the picturesque River Derwent

Weather

Tasmania's four distinct seasons allow students to enjoy the stunning natural environment and wide range of activities all year round.

Spring



5°C – 16°C

September, October, November

Cool wind in mornings, warm afternoons.

Summer



11°C – 24°C

December, January, February

Warm days, long daylight hours, strong sun.

Autumn



10°C – 22°C

March, April, May

Temperate days and cool wind in afternoons, cooler nights.

Winter



3°C – 14°C

June, July, August

Clear days, occasional snow on mountain. Wear a warm coat, enclosed shoes and gloves.

Food

Tasmania is internationally recognised for our vibrant food culture, and the city of Launceston boasts the prestigious title of **UNESCO City of Gastronomy**, celebrated for its exceptional produce.

If students like eating out at restaurants, there are also a range of wonderful places offering local and international cuisine.

Public transport

Tasmania's cities are simple to get around. Buses are the main mode of transport.

In Tasmania, students enjoy discounted bus fares, with a weekly cost of about **AU\$27**.

To save even more on student bus fares, students can pre-pay fares using a Metro Greencard.

Working

Many international students choose to work while living and studying in Australia.

In Tasmania, there are many enriching jobs that help students to build skill, responsibility, and confidence while meeting new people.

All international students have the same protections and rights as any other Australian in the workforce.

International students often work in **tourism, hospitality, and retail** – all of which are thriving sectors in Tasmania.

Jobs are usually offered on a casual basis, which means students can tailor their hours around their study schedule.

We recommend not working more than **10 hours per week** during the school term.

Student accommodation

Tasmania offers high quality, safe accommodation options for international students, from inner city living in Hobart and Launceston to leafy, garden or beach suburbs.

International students have the option to reside with **approved homestay families** or **a parent or immigration-approved relative** during their stay.

“ I’m really grateful for the experience I had and I was really lucky to meet my host family. ”
- Student Leaver Survey, July 2024



Homestay

International students who are applying for **Year 9 entry or higher** (typically 14 years of age or over), can choose to stay with private approved or government managed homestay families.

For homestay arrangements, international students are **under the guardianship of the Tasmanian Government**.

Our homestay program is directly coordinated by our **in-house homestay team** and supported by our **after-hours emergency contact**.

Homestay hosts will provide students with:

- a safe, supportive and welcoming home environment
- a private, furnished bedroom
- a dedicated study area with a desk, chair and lamp
- three nutritious meals per day, plus snacks
- use of facilities (e.g. TV, iron, vacuum cleaner, laundry)
- reasonable use of Wi-Fi for study, research and communication

Homestay hosts support students on arrival, with familiarisation in their new environment, and offer the opportunity for students to participate in family, community and Australian cultural activities.

Homestay hosts accept duty-of-care for students outside of school hours, and support in monitoring each students’ health and wellbeing.

Our dedicated homestay team ensures that:

- every family has a good character clearance, registered with the Tasmanian Government
- we inspect every home to determine suitability for use as student accommodation
- students and hosts have access to our after-hours emergency contact

Kotchaporn from Thailand
International student
at Launceston College

“ I was intrigued to explore Tasmania’s natural landscapes, cuisine, and native animals, and excited about the prospect of studying in Tasmania. I received a lot of support, especially from my ‘Tassie parents’, who genuinely treated me like their own daughter. My host family took me to art galleries, taught me how to cook, and included me in family events. The connections I’ve made with people here are special, and I’m so grateful to be part of their family during my Tassie adventure. ”



Student support and other services

International Student Advisors

In our schools a dedicated and caring International Student Advisor (ISA) is the students' first point of contact.

The ISA will provide ongoing support throughout students' enrolment at the school.

After-hours emergency contact

Outside of regular business hours, we provide an after-hours emergency contact for all international students studying at Tasmania's Government Schools. Our friendly staff are here to help.

Learning support

School staff and teachers can provide assistance with learning support and school activities as well as safety, health, and wellbeing.

Most schools have specialist staff, including course counsellors, social workers, psychologists, and support teachers.

Pre-departure information

Our team will send students a helpful guide before they leave their home country. We are also here to help if students have any questions about life in Tasmania.

Airport pick-up

Airport pick-up is available to students staying in homestay.

Students will be picked up from the airport and taken to their accommodation when they first arrive.

Mobile phone set-up

Upon students' arrival in Tasmania, we assist with setting up a mobile phone and a local bank account.

Orientation

All international students participate in an orientation. The orientation includes information about support and health services in the community, academic and conduct requirements of a student visa, and available assistance programs. School specific orientations will be provided to students by ISAs at school.

Study facilities

Modern library and computer facilities are available at each campus to all students throughout the study week.

How to apply

Tasmanian Government Schools use an online application system for most international programs.

Application process

1
Visit study.tas.gov.au and submit all required documentation.

2
Await an **application acceptance** notification.

3
Receive a **Letter of Offer (LoO)** with payment instructions and deadline.

4
Upload a **copy of LoO** signed by student and parent/guardian and make the payment

5
Receive a **Confirmation of Enrolment (CoE)** and **Overseas Student Health Cover Policy Certificate** (as required).

If student is under 18 and opting for Homestay, we will issue a **Confirmation of Appropriate Accommodation and Welfare (CAAW)**.

6
Apply for a **visa** through the Australian Department of Home Affairs (DHA)

7
Homestay students must provide arrival details at least **four weeks** before the welfare commencement date on the CAAW.

Need some help?

If assistance is required for admission and enrolment, visit study.tas.gov.au or email info@study.tas.gov.au

Entry requirements

Students’ academic aspirations and success are important to us.

To enrol in Junior or Senior High Schools students are required to have satisfied relevant academic and English requirements prior to commencing their course of study.

Primary School

International students **do not** need specific academic or English language proficiency to enrol in Tasmanian Government primary schools. Generally, students attend the nearest primary school to their home address.

High School

Academic requirements

International students are required to demonstrate they have achieved **satisfactory achievement** over the previous two years of schooling.

English language proficiency

Students seeking entry into **Year 9 – 12** are required to demonstrate a proficient level of English language skills before commencing their studies in Tasmania.

Please note, there are **no minimum English requirements** for international students joining our **Study Abroad program** in Tasmanian Government Schools.

International students are expected to either have:

- been taught at a school for at least **2 years** where English is the primary language of instruction; **or**
- **achieved:**
 - a general IELTS test score of at least **4.0**(overall) or equivalent for Year 9 entry;
 - a general IELTS test score of at least **4.5**(overall) or equivalent for Year 10 entry;
 - a general IELTS test score of at least **5.0**(overall) or equivalent for Year 11 and Year 12 entry.

Visit study.tas.gov.au for details of other recognised English language tests, including Duolingo English Test, Oxford Placement Test, EIKEN, TOFEL ibt, AEAS, CEFR etc.

In some cases, alternative proof of English proficiency might be considered by Tasmanian Government Education International on a case-by-case basis.



Fees

Tuition fees

Minimum study period is one term (typically 10 study weeks). Fees listed below cover tuition fees, including English language tuition and enrolment in enrichment activities.

2025	Annual Fee	Weekly Fee
Primary School (Prep – Year 6)	AU \$14,200	AU \$390 per week
Junior High School (Year 7 – 10)	AU \$13,800	AU \$370 per week
Senior High School (Year 11 – 12)	AU \$14,900	AU \$430 per week

Fees for schoolbooks, uniforms and specific excursions are extra.
Contact info@study.tas.gov.au for more information.

Homestay fees

2025	Accommodation visit fee	Homestay management	Homestay fee (Year 9 – 12)
	AU \$200 once-off	AU \$200 per annum	AU \$340 per week

Please note:

- A homestay management fee applies to both government managed and privately arranged homestays.
- In certain circumstances, a summer premium homestay fee may apply.
- The Accommodation visit fee applies to accommodation with DHA approved guardians (non-parent). This fee may be re-applied if there is a change in welfare arrangements.
- Homestay Fees increase to \$360 from 1 January 2026.

Service fees

Service fees cover annual administration fee for application and school placement and student arrival support.

Administration fee	AU \$75 per term AU \$300 per year
Arrival support fee	AU \$150 once-off arrival support fee

Tuition and service fees will automatically apply to all offers issued for study.

Overseas Student Health Cover (OSHC)	
Monthly	AU \$63 (approximately)
Annually	AU \$730 (approximately)

Term dates

Students can enrol at any time throughout the school year, except those intending to complete the two-year program for Year 11 and 12, who must commence at the start of the academic year.

2025	Term 1	Term 2	Term 3	Term 4
START	Thursday 6 February	Monday 28 April	Monday 21 July	Monday 13 October
END	Friday 11 April	Friday 4 July	Friday 26 September	Thursday 18 December*

*Senior High School finishes in November before end of year exams.



Discover more

 Website

 Facebook

 Instagram

 YouTube

 LinkedIn

 VR Tour


study.tas.gov.au


@TasGovEduInt


@TasGovEduInt


@TasGovEduInt


@TGEI



Campus Guide



High Schools (Year 7 – 12)

North

- Prospect High School
- Queechy High School
- Devonport High School
- Burnie High School
- Smithton High School
- Launceston College
- Newstead College
- Don College
- Hellyer College

South

- Hobart City High School
- Taroona High School
- Kingston High School
- Rose Bay High School
- Clarence High School
- Elizabeth College
- Hobart College
- Rosny College

Primary schools (Prep – Year 6)

North

- Andrews Creek Primary School
- Beaconsfield Primary School
- Bicheno Primary School
- Bracknell Primary School
- Bridport Primary School
- Deloraine Primary School
- East Launceston Primary School
- East Tamar Primary School
- Evandale Primary School
- Exeter Primary School
- Forest Primary School
- Glen Dhu Primary School
- Hagley Farm Primary School
- Invermay Primary School
- Longford Primary School
- Mowbray Heights Primary School
- Norwood Primary School
- Perth Primary School
- Punchbowl Primary School
- Ravenswood Heights Primary School
- Ringarooma Primary School
- Riverside Primary School
- Scottsdale Primary School
- South George Town Primary School
- St Leonards Primary School
- Summerdale Primary School
- Swansea Primary School
- Trevallyn Primary School
- Waverley Primary School
- West Launceston Primary School
- Westbury Primary School
- Youngtown Primary School

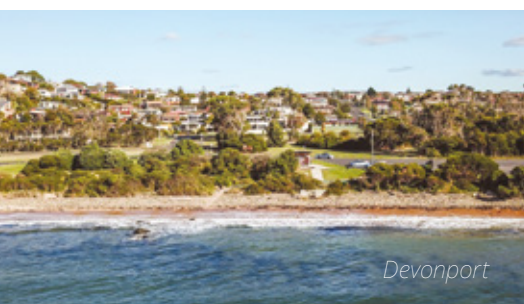
North-West

- Boat Harbour Primary School
- Burnie Primary School
- Cooee Primary School
- Devonport Primary School
- East Devonport Primary School
- East Ulverstone Primary School
- Edith Creek Primary School
- Forth Primary School
- Riana Primary School
- Redpa Primary School
- Ridgley Primary School
- Romaine Park Primary School
- Latrobe Primary School
- Miandetta Primary School
- Mole Creek Primary School
- Montello Primary School
- Natone Primary School
- Nixon Street Primary School
- Port Sorell Primary School
- Hillcrest Primary School
- Havenview Primary School
- Sassafras Primary School
- Sprent Primary School
- Smithton Primary School
- Somerset Primary School
- Spreyton Primary School
- Stanley Primary School
- Strahan Primary School
- Table Cape Primary School
- Ulverstone Primary School
- West Ulverstone Primary School
- Wilmot Primary School
- Zeehan Primary School

South

- Albuera Street Primary School
- Austins Ferry Primary School
- Bagdad Primary School
- Bellerive Primary School
- Blackmans Bay Primary School
- Bowen Road Primary School
- Brighton Primary School
- Cambridge Primary School
- Campbell Street Primary School
- Clarendon Vale Primary School
- Collinsvale Primary School
- Cygnnet Primary School
- Dodges Ferry Primary School
- Dunalley Primary School
- East Derwent Primary School
- Fairview Primary School
- Franklin Primary School
- Gagebrook Primary School
- Geeveston Primary School
- Glen Huon Primary School
- Glenorchy Primary School
- Goodwood Primary School
- Goulburn Street Primary School
- Herdsmans Cove Primary School
- Howrah Primary School
- Huonville Primary School
- Illawarra Primary School
- Kempton Primary School
- Kingston Primary School
- Lansdowne Crescent Primary School
- Lauderdale Primary School
- Lenah Valley Primary School
- Lindisfarne North Primary School
- Lindisfarne Primary School
- Margate Primary School
- Molesworth Primary School
- Montagu Bay Primary School
- Moonah Primary School
- Mount Nelson Primary School
- Mount Stuart Primary School
- New Norfolk Primary School
- New Town Primary School
- Orford Primary School
- Princes Street Primary School
- Richmond Primary School
- Risdon Vale Primary School
- Rokeby Primary School
- Rosetta Primary School
- Sandy Bay Infant School
- Snug Primary School
- South Arm Primary School
- South Hobart Primary School
- Springfield Gardens Primary School
- Taroona Primary School
- Waimea Heights Primary School
- Warrane Primary School
- Westerway Primary School
- Windermere Primary School

<https://www.decyp.tas.gov.au/learning/find-your-local-school>





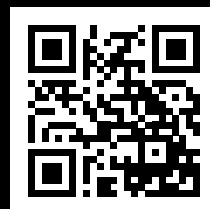
Tasmanian
Government

**Tasmanian Government
Education International**

Email: info@study.tas.gov.au

Tel: +61 3 6165 5727

study.tas.gov.au
(or scan QR Code)



DISCLAIMER: The information contained in this publication is correct at the time of publication January 2025. Every effort has been made to ensure details are correct and accurate, however Tasmanian Government Education International reserves the right to change information without notice.

CRICOS Provider Name: Tasmanian Government Education International.
Provider Code: 03352G

Information and prices are correct at time of printing.
Photo credits: Stu Gibson, Ness Vanderburgh, Matthew Donovan,
Tourism Tasmania